

1055

74

U.P.R.N.

R.P.O. Vol. 61 Fol. 179

C.T. Vol. 4715 Fol. 437

Cadastral Sheet G. 11. B., 62F/2/a

Ward of La Brea

County of St. Patrick

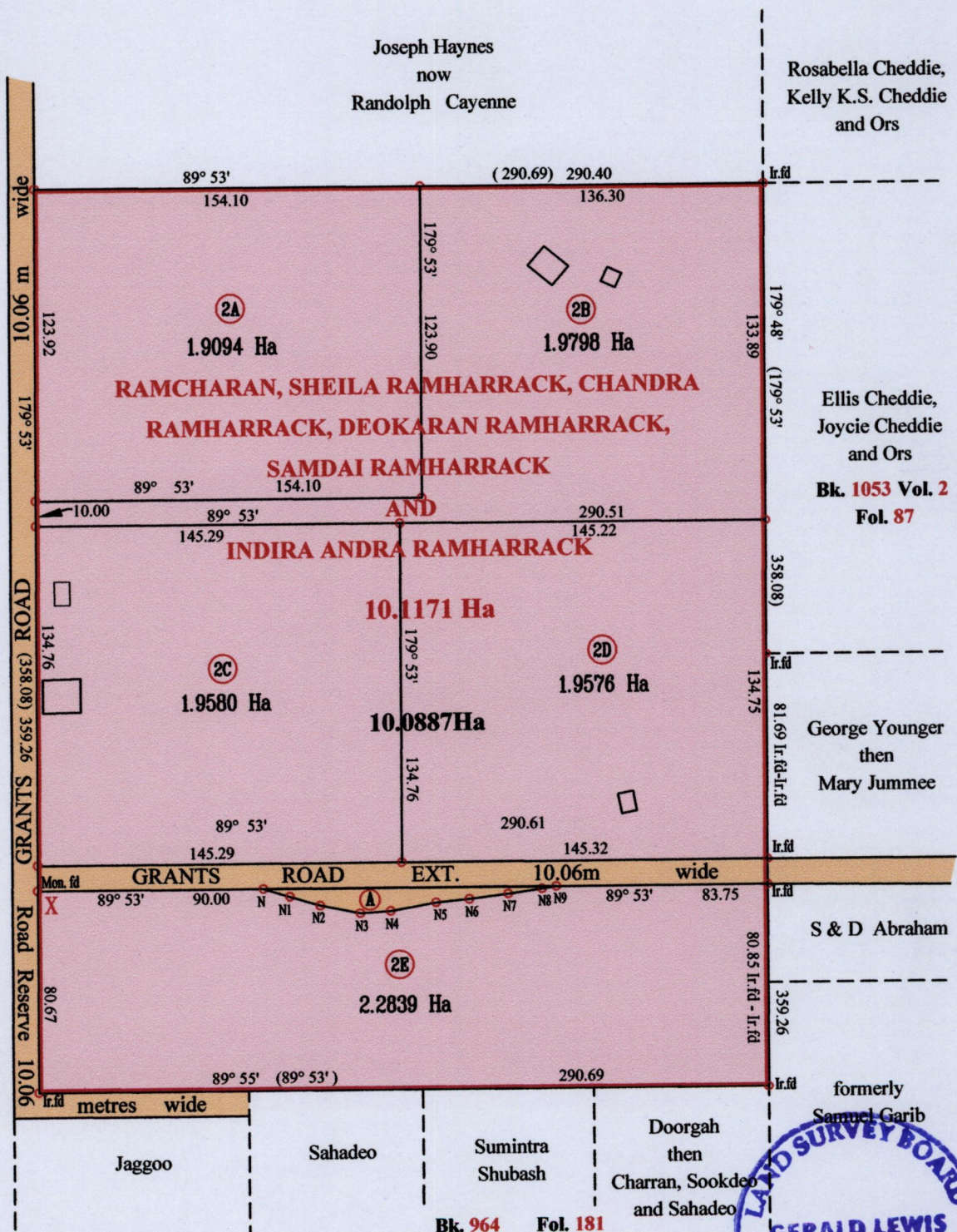
Bk: 718 Fol: 210



X - 655453mE, 1126526mN
UTM ZONE 20, WGS 84
Direct Observation-GPS Hand held

Line	Brg.	Dist.
N-N1	106° 48'	11.06
N1-N2	106° 35'	12.60
N2-N3	101° 12'	16.41
N3-N4	86° 04'	12.10
N4-N5	79° 48'	18.39
N5-N6	84° 41'	13.33
N6-N7	82° 29'	15.62
N7-N8	81° 49'	13.61
N8-N9	80° 53'	5.78

A - See Plan K.E 15
627.6m² to be resumed



Approved
Director of Surveys 9/9/14



○ Denotes Iron Put unless otherwise stated
Bearings are U.T.M Grid based on Solar Obs

SCALE 1: 2500
Distances are in Metres

PLAN of 5 Parcels of land coloured pink in the Ward of La Brea

Containing together ten point zero eight eight seven hectares

Surveyed by me, with due authority, in July 2014

Certified Correct in accordance with Regulation 25(1) of the Land Surveyors Regulations 1998

Entered by

Checked on

Trinidad & Tobago Land Surveyor 07/07/2014