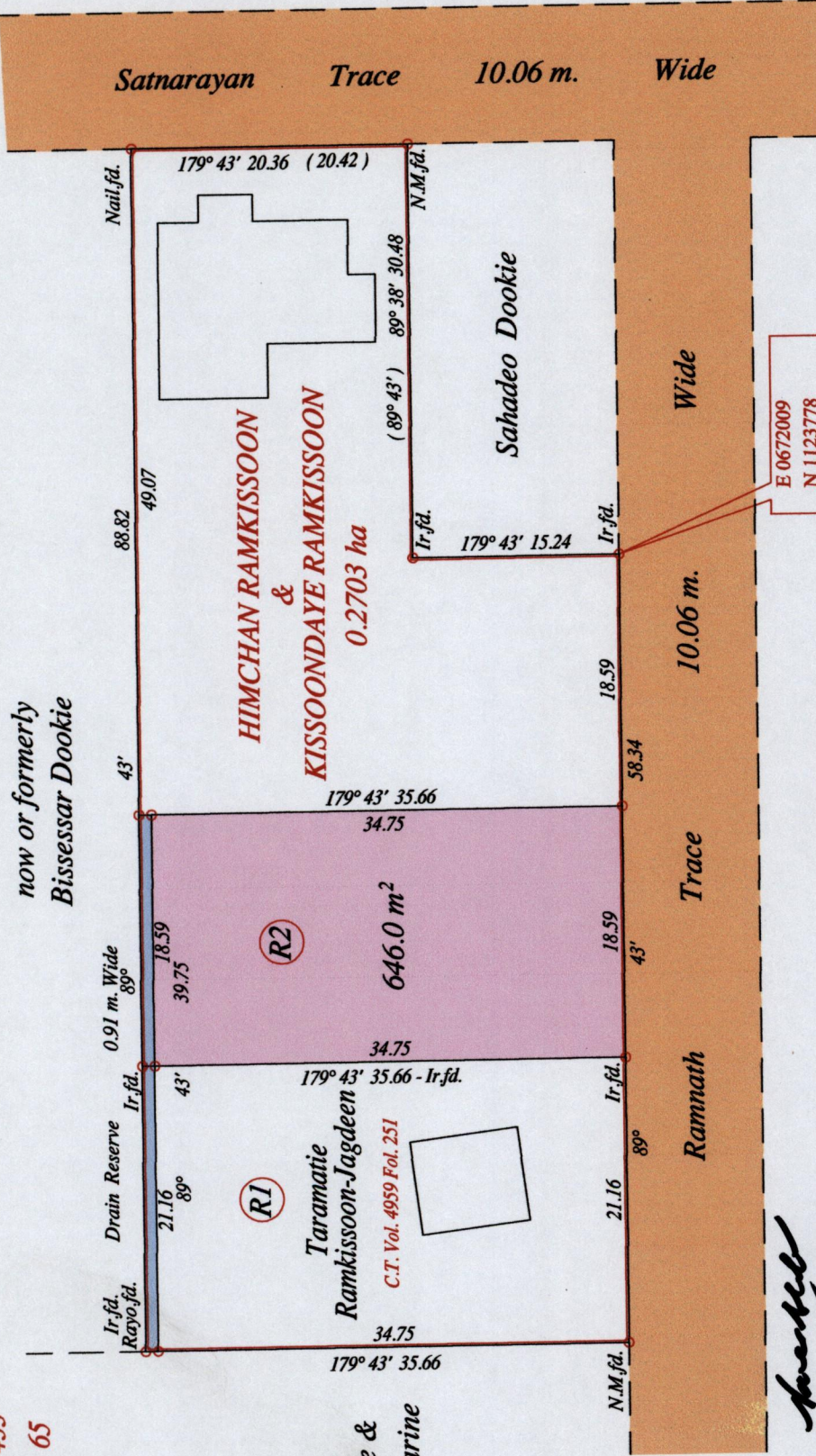
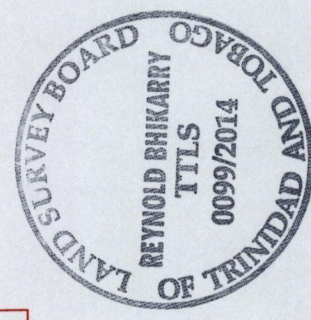


R.P.O. Vol. 241 Fol. 433
 C.T. Vol. 3804 Fol. 65

Ward of Siparia
 County of St Patrick
 Cadastral Sheet G 13 K, 63 F
 4/a



E 0672009
 N 1123778
 U.T.M. Napparima
 ZONE 20
 ± 10m.



Vide Bk. 1233 fol. 2
 Vide Bk. 980 fol. 79 & 98
 SCALE : 1:500
 Distances are in metres

Approved
 Director of Surveys

o Denotes Iron put except stated otherwise.
 Note: Bearings are U.T.M. grid based on solar observations
 PLAN of a Parcel of land coloured pink in the Ward of Siparia
 Containing six hundred and forty six point zero square metres
 Surveyed by me, with due authority, in February 2014
 Certified correct in accordance with Regulation 25 (1) of the Land Surveyors Regulations 1998.

Checked by
 Entered on Trinidad & Tobago Land Surveyor 2014

1655

71

