

REMAINING PORTION

R.P.O. Vol. 164 Fol. 517

C.T. Vol. 1779 Fol. 283

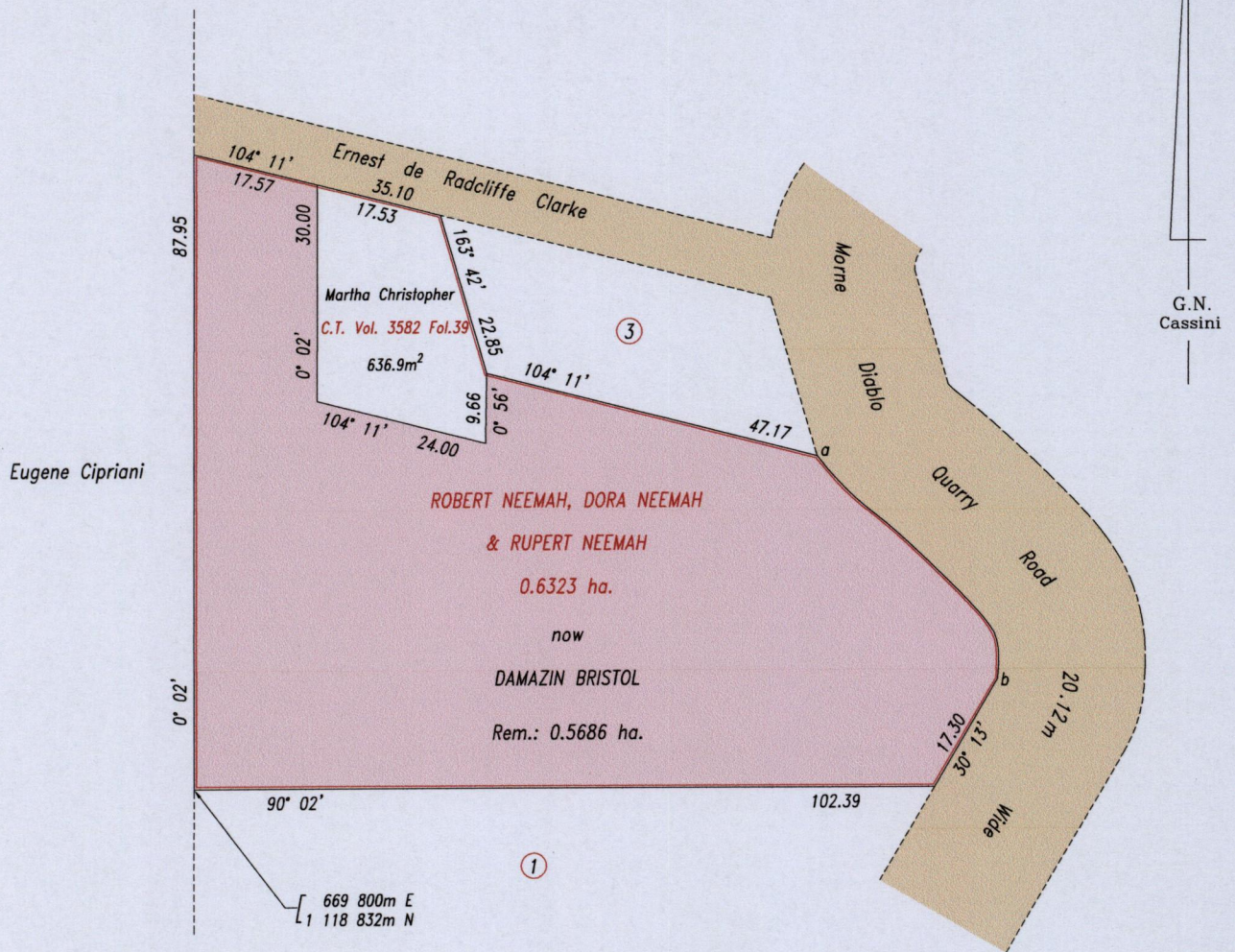
U.P.I.N.:

Ward of Siparia

County of St. Patrick

Cadastral Sheet G.18.F. 73C
3/a

Reference: Bk.1211 Fol.58



Sta. - Sta.	Bearing	Distance
a - b	141° 00'	39.71

Coordinate Information
Source: Derived from Scaling Coordinates from Map Sheet 73C 3/a
Error Statement: +/- 10m
Datum: Naparima, UTM (Zone 20)

Approved

Director of Surveys

[Signature]
8/9/14

SCALE 1: 1000

Distances are in metres

PLAN of zero point six three two three hectare originally transferred to ROBERT NEEMAH, DORA NEEMAH and RUPERT NEEMAH showing a portion coloured pink and containing zero point five six eight six hectare being the remainder after one (1) previous transfer of another portion of the land. In accordance with Regulation 25(1) of the Land Surveyors' Regulations 1998, I certify that this plan represents the remaining portion.

Checked by

Entered

Trinidad & Tobago Land Surveyor

L.A. Kipland
9/8/2014

