

1655

66

U.P.R.N.

R.P.O. Vol. 55 Fol. 399

C.T. Vol. 4357 Fol. 493

Cadastral Sheet G. 11. H., 63D
1/c

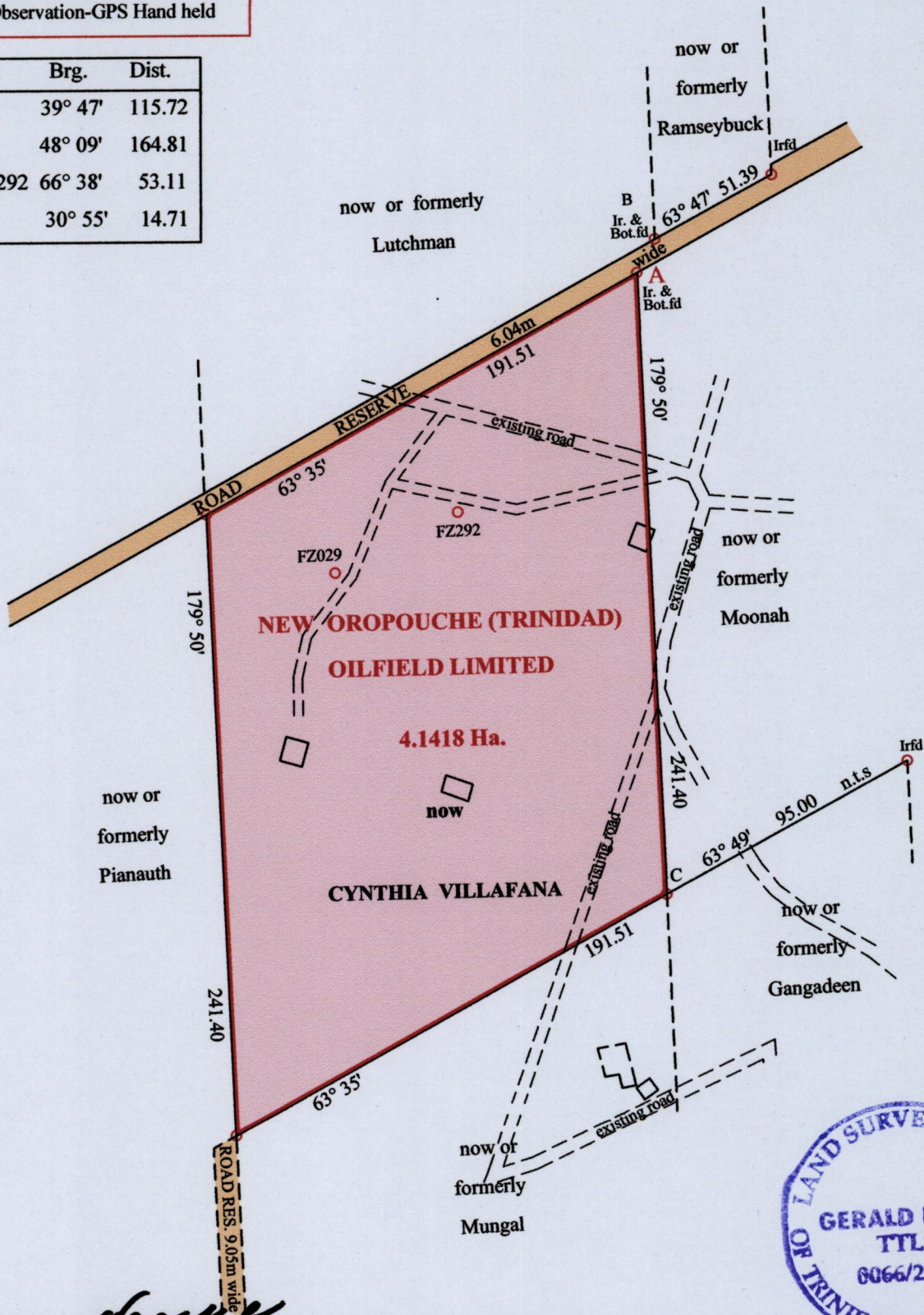
Ward of Siparia

County of St. Patrick

Ref. Plan K.E. 32

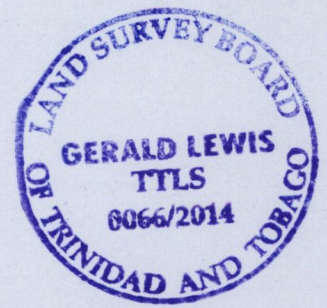
A - 657,784mE, 1125101mN
UTM ZONE 20, Naparima (+/- 3.00M)
Direct Observation-GPS Hand held

Line	Brg.	Dist.
FZ292-A	39° 47'	115.72
FZ029-A	48° 09'	164.81
FZ029-FZ292	66° 38'	53.11
A-B	30° 55'	14.71



G.N.
U.T.M

[Signature]
Approved
Director of Surveys 5/9/14



SCALE 1: 3000
Distances are in Metres

○ Denotes Iron Put unless otherwise stated
Bearings are U.T.M Grid based on Solar Obs
PLAN of a Parcel of land coloured pink in the Ward of Siparia
Containing four point one four one eight hectares
Surveyed by me, with due authority, in May 2014
Certified Correct in accordance with Regulation 25(1) of the Land Surveyors Regulations 1998
Entered by
Checked by

[Signature]
Trinidad & Tobago Land Surveyor 12/07/2014