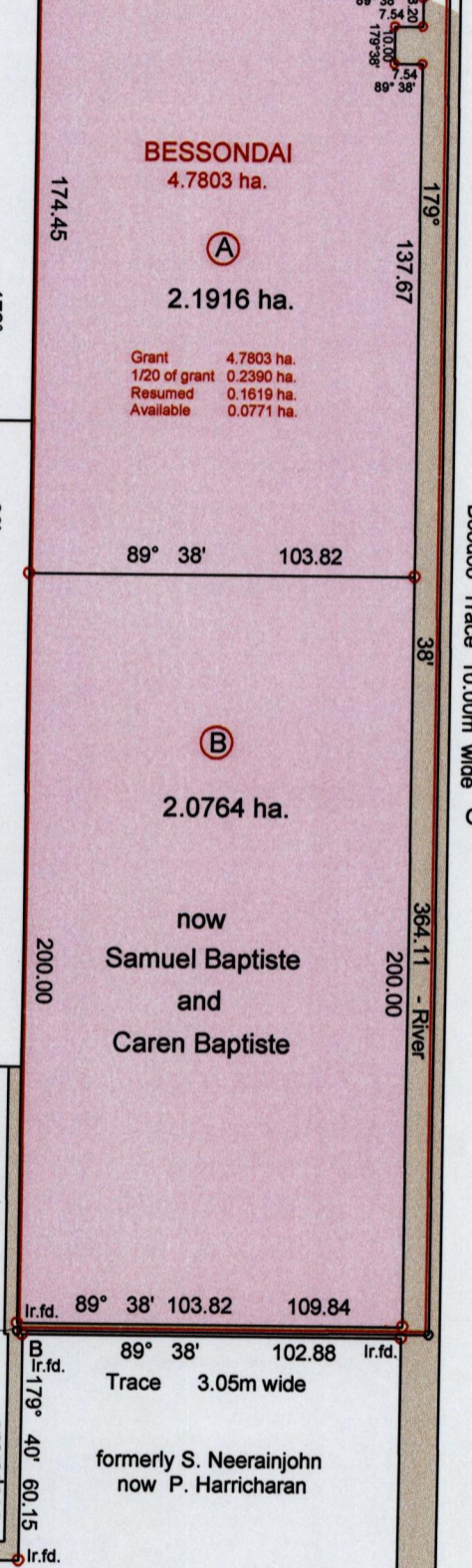
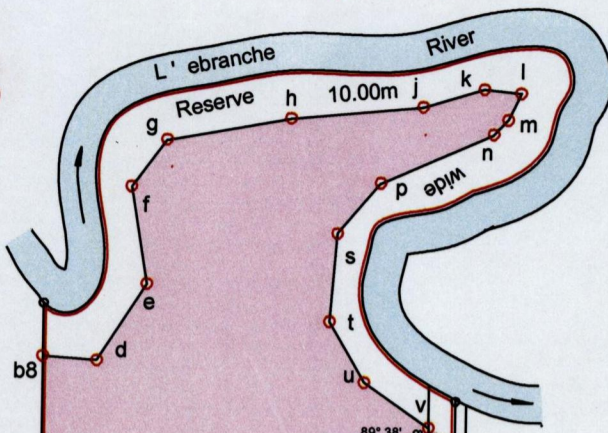
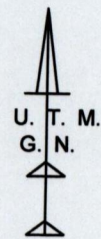


R.P.O. Vol. 45 Fol. 521  
C.T. Vol. 821 Fol. 419



line	bearing	distance
b8-d	93° 58'	14.47
d-e	31° 53'	24.47
e-f	350° 07'	26.44
f-g	36° 23'	15.65
g-h	79° 31'	33.76
h-j	84° 21'	35.56
j-k	73° 07'	17.10
k-l	95° 22'	9.91
l-m	205° 00'	7.94
m-n	223° 59'	5.43
n-p	245° 59'	32.92
p-s	220° 04'	17.73
s-t	184° 03'	23.82
t-u	149° 19'	18.89
u-v	124° 03'	21.33

**BESSONDAI**  
4.7803 ha.  
2.1916 ha.  
Grant 4.7803 ha.  
1/20 of grant 0.2390 ha.  
Resumed 0.1619 ha.  
Available 0.0771 ha.

**(B)**  
2.0764 ha.  
now  
Samuel Baptiste  
and  
Caren Baptiste

George Joseph Kernahan  
Bk 298 : 152



References  
Bk 162 : 76  
Bk. 1065 : 9  
Plan E.B. 78  
Plan K.C. 32

Approved.....  
Director of Surveys  
4/9/14

B N 1162272 E 0709293 +/- 8.0m W.G.S.84 Zone 20 U.T.M. G.P.S. Handheld  
○ Denotes Iron put except stated otherwise  
Note : Bearings are U.T.M. Grid based on Solar Observations  
Plan of two parcels of land coloured pink in the Ward of Turure  
Containing together four point two six eight zero hectares.  
Surveyed by me with due authority in September 2012  
Certified correct in accordance with Reg. 25(1) of the Land Surveyors' Regulations 1998.

Checked by MMU 27/8/2014  
Entered.....  
Trinidad and Tobago Land Surveyor  
date 21.05.2014