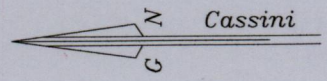
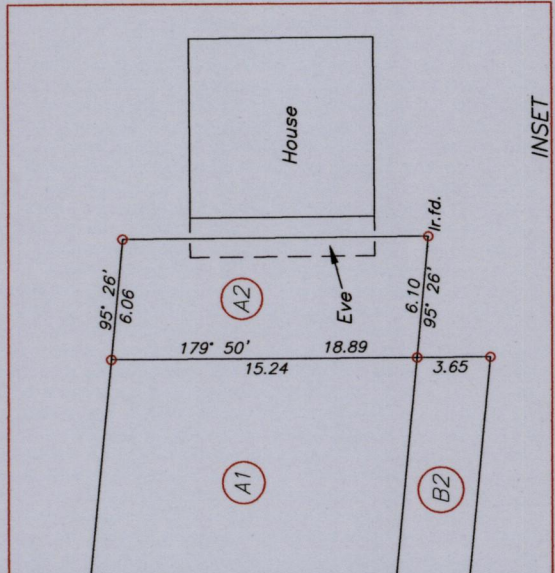
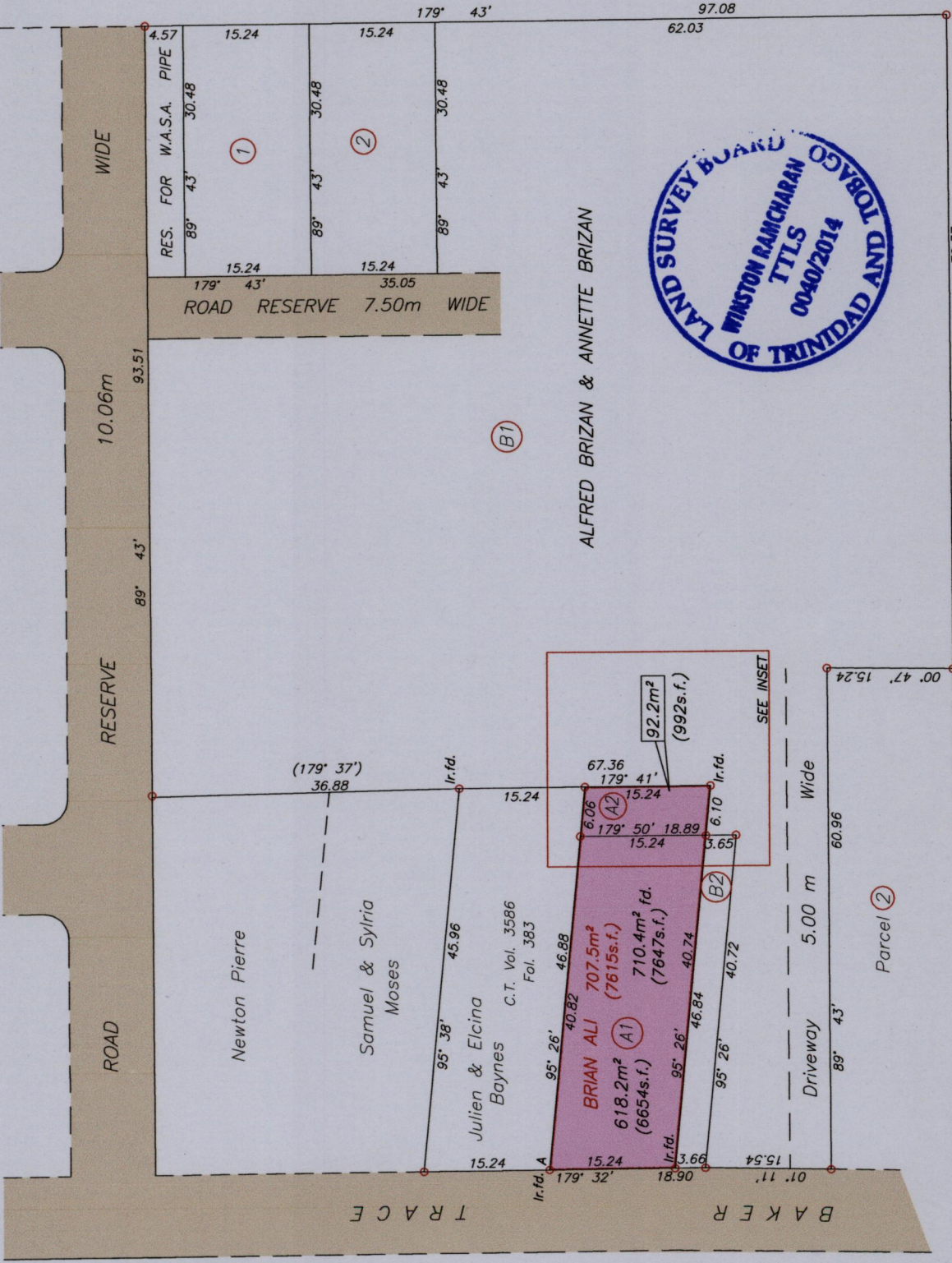


R.P.O. Vol. 490 Fol. 115  
 C.T. Vol. 2518 Fol. 199

Cadastral Sheet C.22.M. 25F  
 1/c  
 Ward of Turure  
 County of St Andrew



Hand held G.P.S U.T.M  
 20 WGS 84 +/- 3.0m

E	0703 432
A	N 1170 575

Vide Bk.	997:136
Vide Bk.	1211:90

Trinidad  
 Co-operative  
 bank

SCALE 1/750  
 Distances are in metres

A2 to be amalgamated with B1

Trinidad  
 Co-operative  
 bank

Approved  
 .....  
 Director of Surveys

Bearings are Cassini Grid based on Solar Observations  
 Plan of 2 Parcels of land coloured pink in the Ward of Turure  
 Containing together seven one zero point four square metres  
 Surveyed by me, with due authority, in June 2007  
 Certified Correct in accordance with Regulation 25 (1) of the Land Surveyors' Regulations 1998,

*Winston Ramcharan*

Trinidad & Tobago Land Surveyor 9<sup>th</sup> April 2014

Checked by ..... Entered on .....