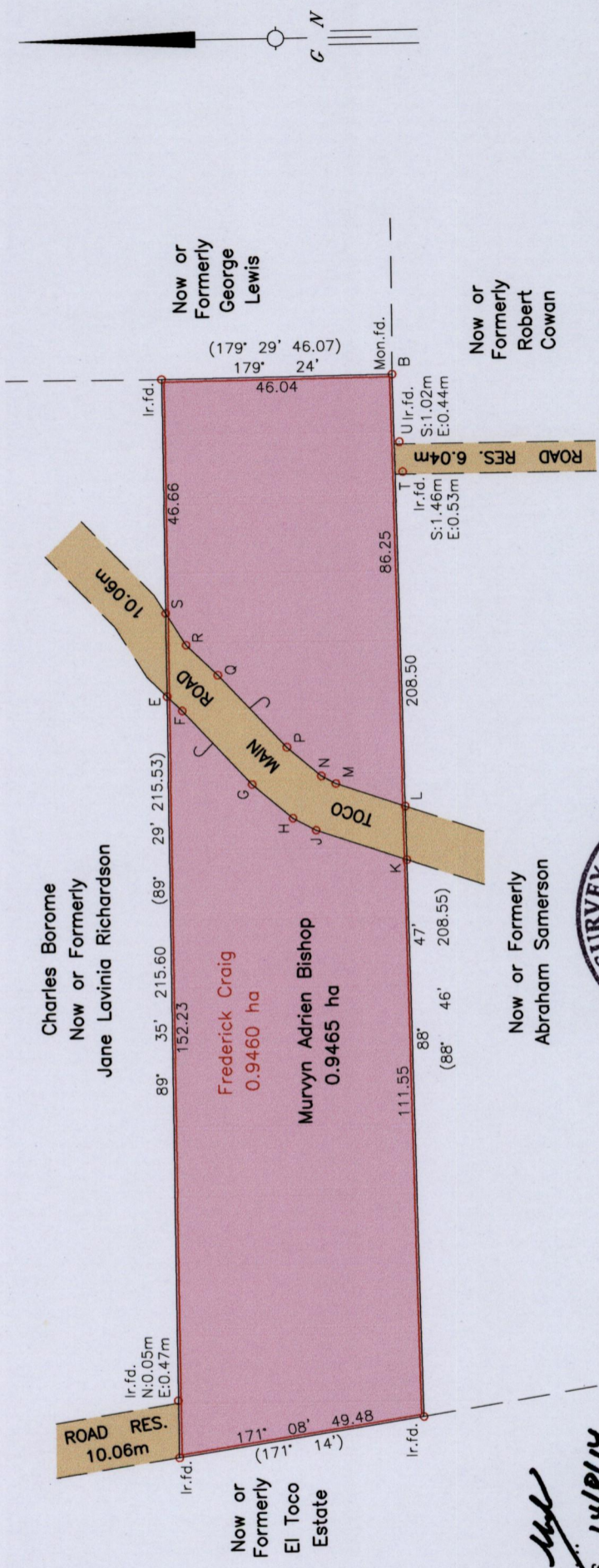


1655

47

R.P.O. Vol. 792 Fol. 17

Refs.: L&S Bk. 786 Fol. 21
Plan B.B. 31
S.O. No. 113/34

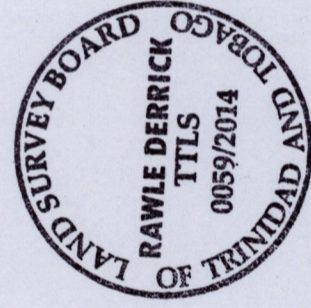


E-F	224° 10'	4.18
F-G	226° 46'	20.27
G-H	220° 10'	10.58
H-J	208° 03'	5.23
J-K	198° 43'	19.06
K-L	88° 47'	10.70
L-M	18° 43'	14.59
M-N	28° 03'	3.34
N-P	40° 10'	8.93
P-Q	46° 46'	19.92
Q-R	44° 10'	8.74
R-S	58° 10'	7.62
E-S	89° 35'	16.71
T-U	84° 33'	5.98
U-B	84° 30'	13.58

Approved.....
Director of Surveys 14/8/14

o Denotes Iron put except otherwise stated
Bearings are Cassini Grid based on Solar Observations
Plan of a Parcel of land coloured pink in the Ward of Toco
Containing zero point nine four six five hectare
Surveyed by me with due authority, on March 13, 2012
Certified Correct in accordance with Regulation 25 (1) of the
Land Surveyors Regulations 1998.

Checked by.....
Entered..... Trinidad & Tobago Land Surveyor July 15 2014



Mon.f.d.=B:-N:1196453m
E:725069m
UTM 20, NAP Datum ± 7m
GPS (Hand Held)

SCALE 1/1500
Distances are in Metres