

1655

4

REMAINING PORTION

R.P.O. Vol. 253 Fol. 483

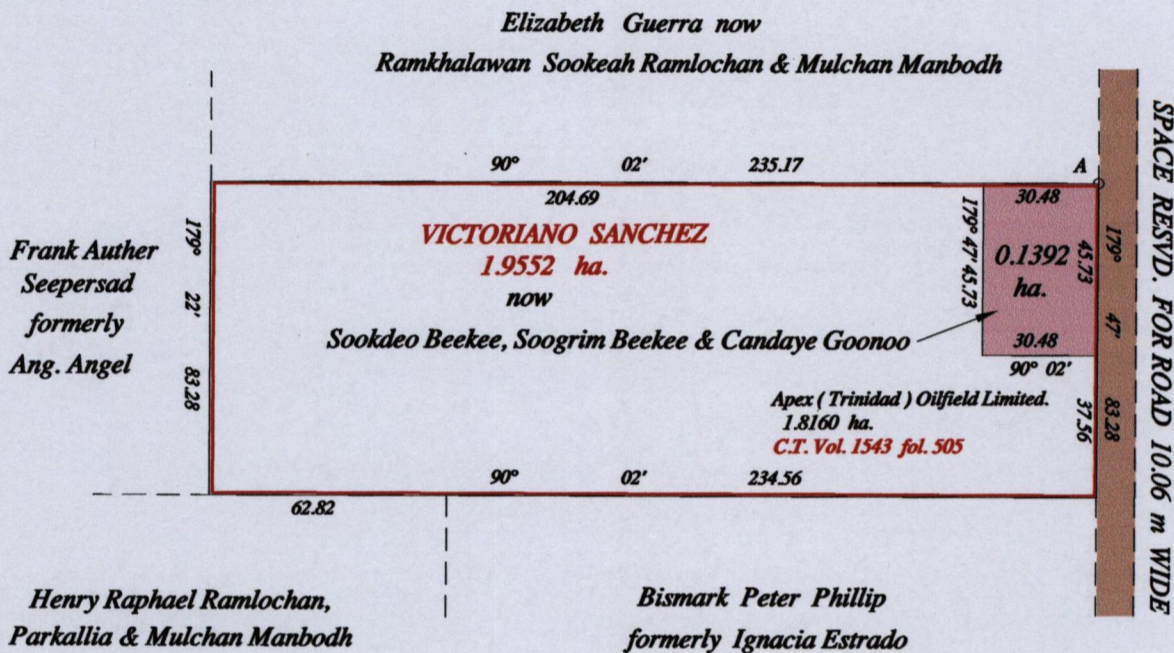
C.T. Vol. Fol.

Ward of Siparia

County of St. Patrick

Cadastral Sheet G. 17. B. 73 A. / 2/c

A = E 661765
N 1120261
Reading taken with
Handheld G.P.S.
U.T.M. 20 Naparima
± 5m.



Vide Bk. 487 fol. 184
Vide Bk. 944 fol. 298

Approved *Shervon Phriday*
Director of Surveys 30/6/14

SCALE : 1:2000
Distances are in metres

Plan of one point nine five five two hectares, originally granted to VICTORIANO SANCHEZ, showing a portion coloured pink and containing zero point one three nine two hectares being the remainder after one (1) previous transfer of another portion of the land. In accordance with Regulation 25 (1) of the Land Surveyors' Regulations 1998, I certify that this plan represents the remaining portion.

Checked by *Shervon Phriday*

Entered on Trinidad & Tobago Land Surveyor 10th June 2014