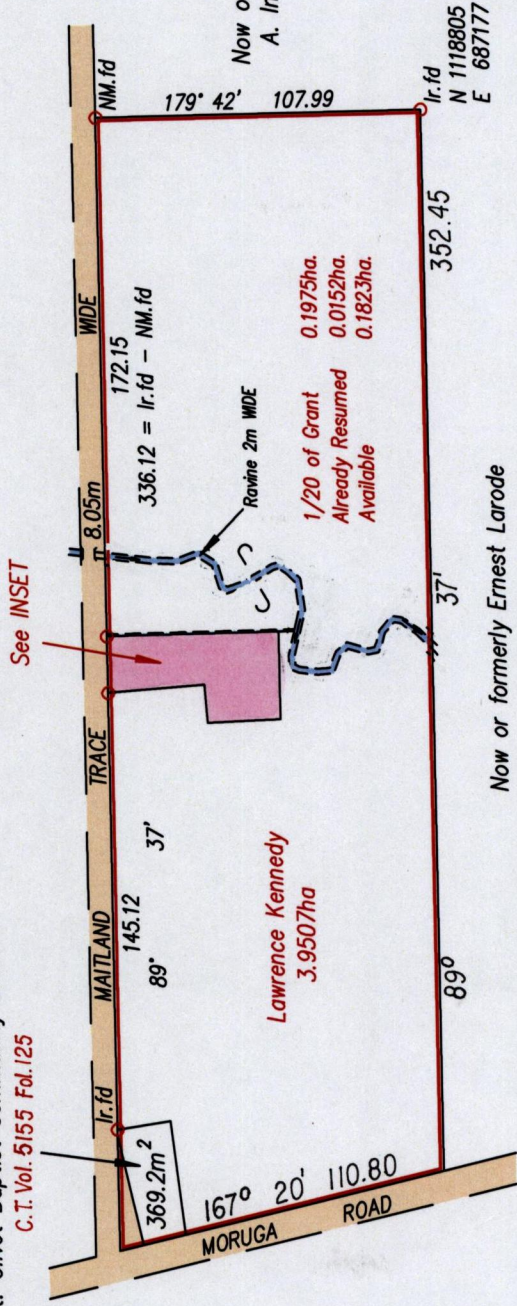


Maitland Trace, Moruga

R.P.O Vol. 111 fol.607
C.T. Vol. 5155 fol.117

Mt. Olivet Baptist Community Church
C.T. Vol. 5155 Fol.125

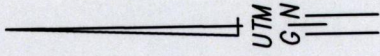
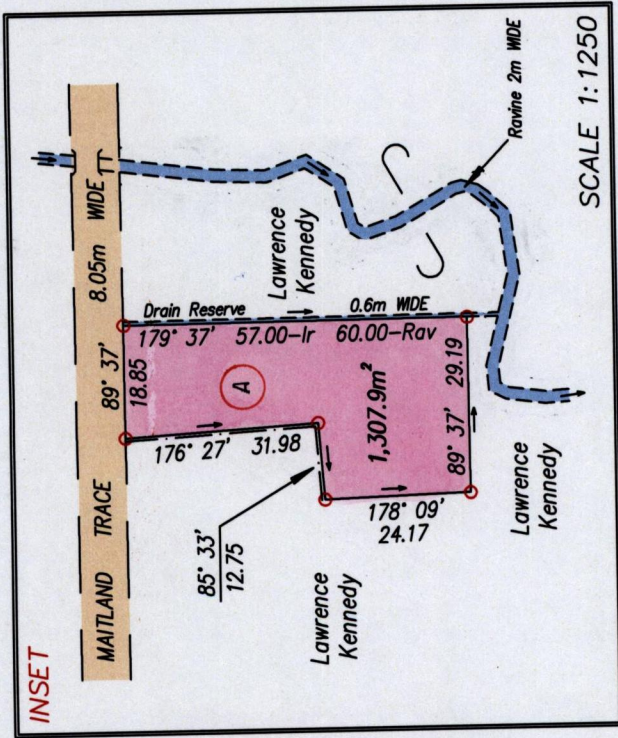


○ Denotes Iron put except where stated otherwise
Bearings are UTM Grid based on Solar Observations
Co-ordinates are Naparima/UTM, derived using Handheld GPS (+/-5m)

PLAN of a parcel of land coloured pink in the Ward of Moruga
Containing one thousand three hundred and seven point nine square metres
Surveyed by me, with due authority, in March 2010
In accordance with Regulation 25 (1) of the Land Surveyors' Regulations 1998, I certify that this plan is correct.

Checked by
Entered on

Christian Persad
Trinidad & Tobago Land Surveyor
06/02/2012

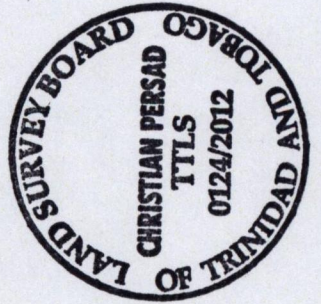


SCALE 1:1250

References
Bk.317 fol.94
Bk.859 fol.89

SCALE 1:2500
Distances are in metres

Approved
Christian Persad
Director of Surveys 13/8/12



29 9991