

1655

36

R.P.O. Vol.14 Fol. 549

C.T. Vol. 168 Fol. 613

U.P.R.N. No.

Cadastral Sheet 62C, G.11.B, G.6.N. 3/d

Ward of La Brea

County of St. Patrick

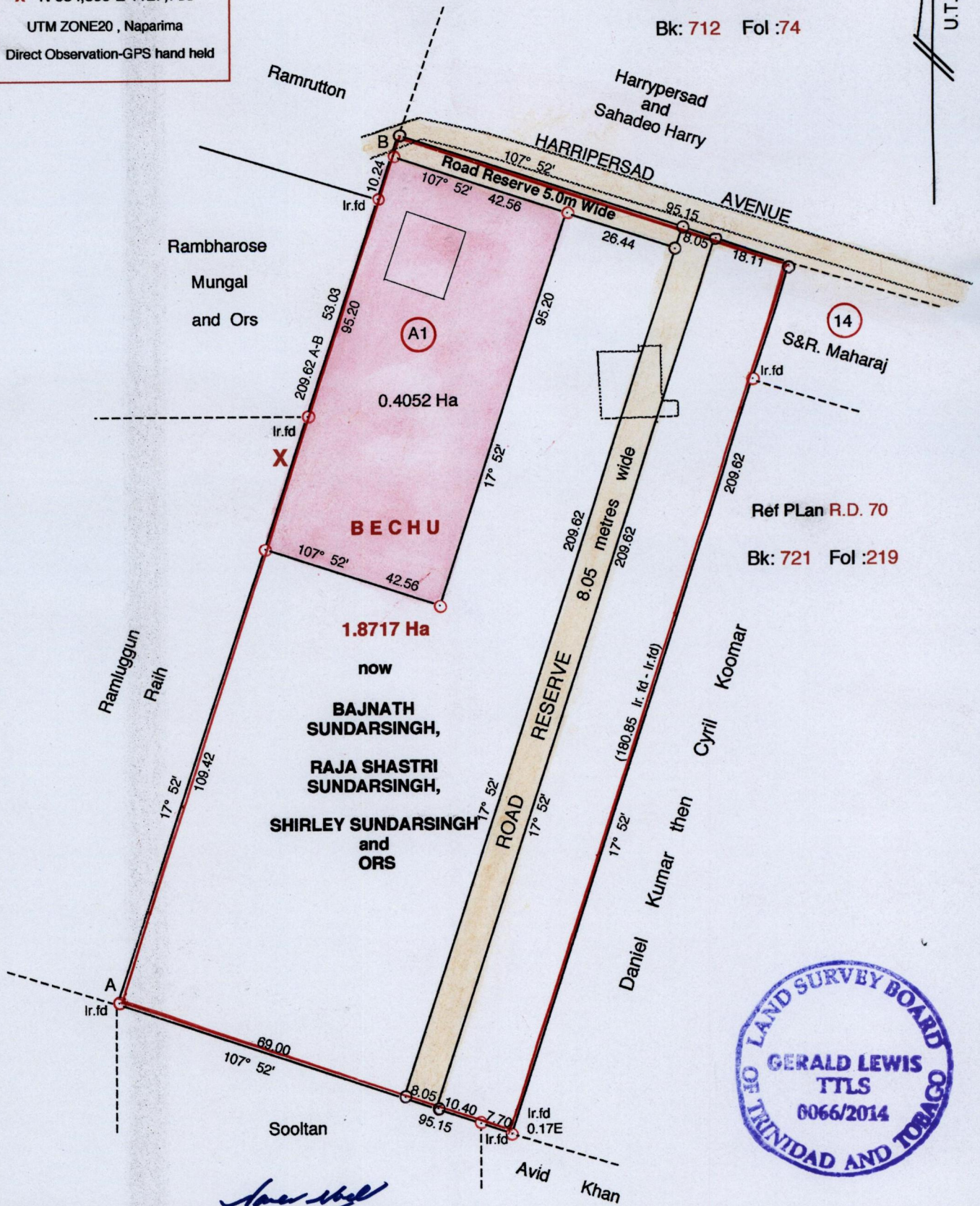
Bk: 456 Fol :166

Bk: 712 Fol :74

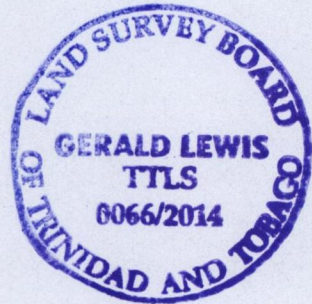
G.N.

U.T.M

X - N 654,399 E 1127,738
 UTM ZONE20, Naparima
 Direct Observation-GPS hand held



Ref Plan R.D. 70
 Bk: 721 Fol :219



Approved
 Director of Surveys 15/8/14

○ Denotes Iron Put unless otherwise stated
 Bearings are U.T.M Grid based on Solar Obs.

Distances are in metres
 SCALE 1 : 1250

PLAN of a parcel of land coloured pink in the Ward of La Brea
 Containing **zero point four zero five two hectares**
 Surveyed by me, with due authority, in November 2009

Certified correct in accordance with Regulation 25(1) of the Land Surveyors Regulations 1998

Entered by.....

Checked on 12/8/2014

Gerald Lewis
 Trinidad and Tobago Land Surveyor 07/07/ 2014