

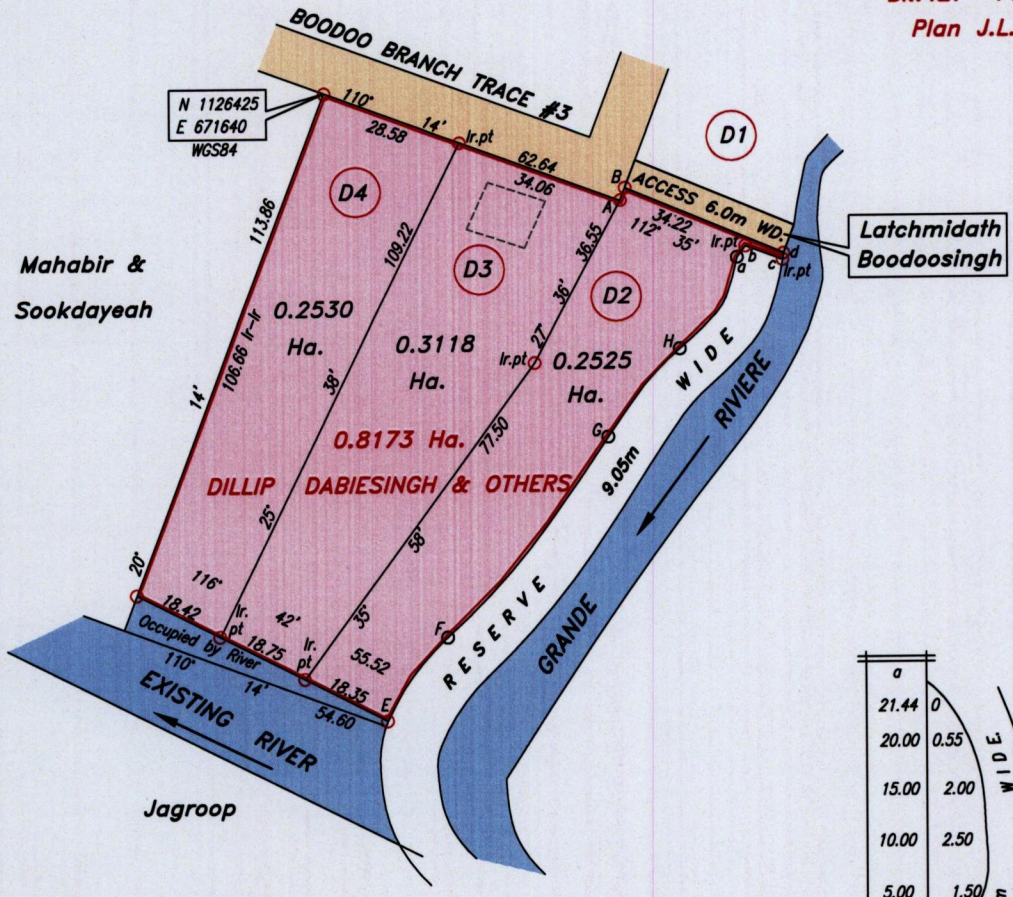
R.P.O. Vol. 308 fol. 633  
C.T. Vol. 5439 fol. 35

Cadastral Sheet G.13.G. 63F  
1/b,1/d  
Ward of Naparima  
County of Victoria

Debe

Vide Bk.1271 Fol.293  
Bk.1376 Fol.187  
Bk.1010 Fol.135  
Bk.980 Fol.23  
Bk.427 Fol.178  
Plan J.L.21

U.T.M.  
G I N

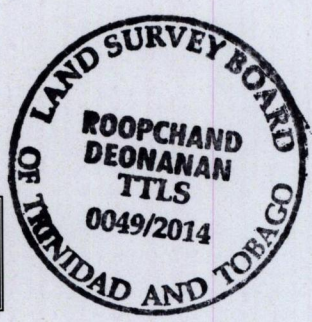


Mahabir &  
Sookdayeah

Latchmidath  
Boodoosingh

A - B	20° 14'	2.70
a - b	35° 52'	2.79
b - c	110° 14'	7.93
c - d	07° 28'	1.33

Note :  
Coordinates obtained by  
hand held G.P.S. (+/-4.0m.)  
For Identification only



Approved  
*[Signature]*  
Director of Surveys **GIRIN**

o Denotes Iron found except otherwise stated  
Bearings are U.T.M. Grid based on Solar Observations  
Plan of 3 Parcels of land coloured pink in the Ward of Naparima  
Containing together zero point eight one seven three hectare  
Surveyed by me, with due authority, in March 2013  
Certified Correct in accordance with Regulation 25(1) of the Land Surveyors' Regulations 1998,

SCALE 1:1500  
Distances are in Metres

Checked by *[Signature]* 08/03/2014

Entered . . . . .

*[Signature]*  
Trinidad & Tobago Land Surveyor . . . . . 26th March 2014.  
PATH = ADA004 D:/DEO\DABESINGH 3 DWG.

