

R.P.O. Vol. 590 Fol. 381

C.T.Vol. 3933 Fol. 279

Ref. : Plan G.A. 164

Ref. : Plan J.B. 87

NOTE : Plot (B1) to be amalgamated to Plot (9)

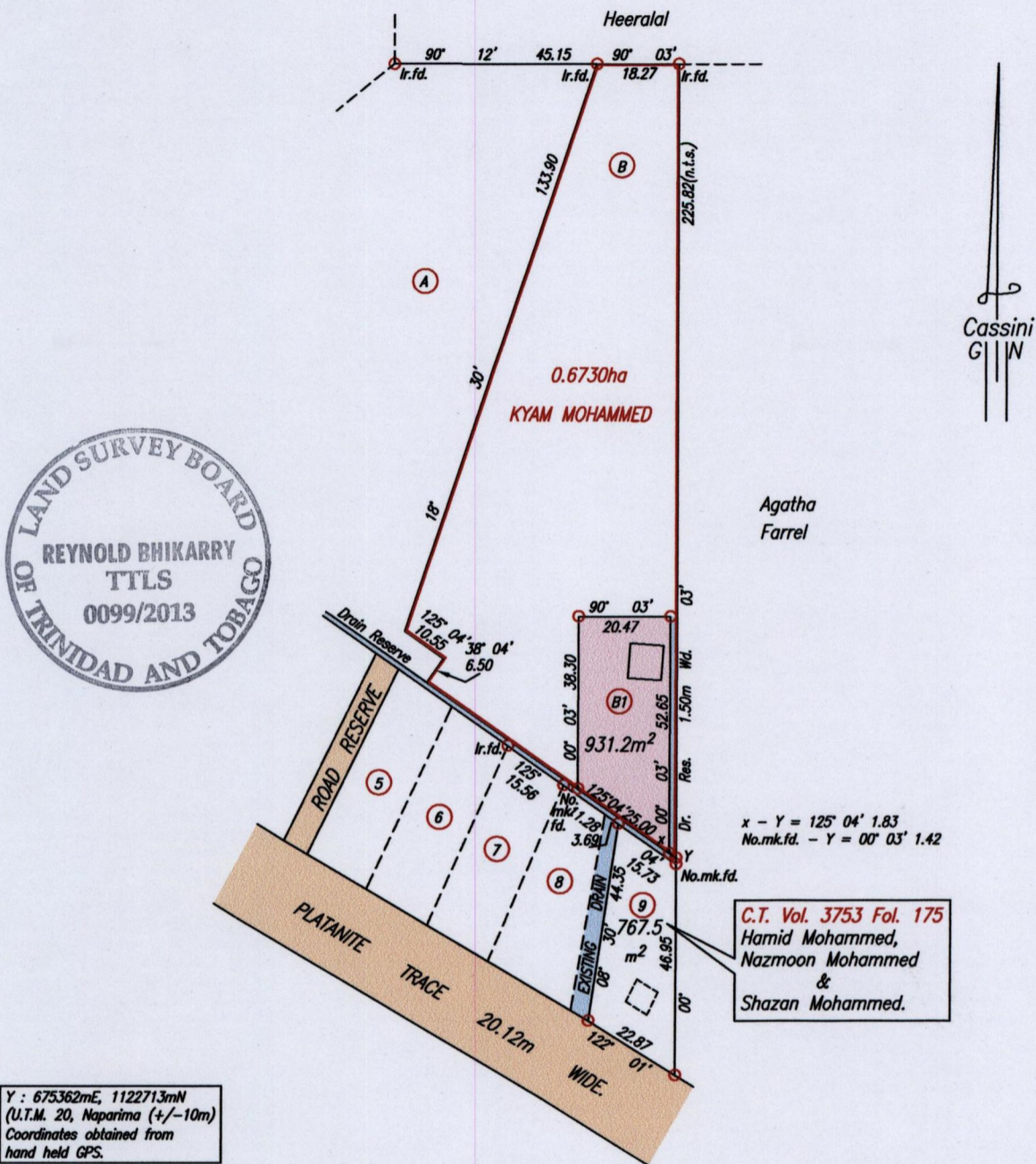
Cadastral Sheet G.14.M. 64D  
3/c

Ward of Siparia

County of St.Patrick

Platanite Trace,

Rochard Douglas Road.



Y : 675362mE, 1122713mN  
(U.T.M. 20, Naparima (+/-10m)  
Coordinates obtained from  
hand held GPS.

Approved

*[Signature]*  
Director of Surveys

SCALE 1:1500

Distances are in metres

○ Denotes Iron put except otherwise stated  
Bearings are Cassini Grid based on Solar Observations  
PLAN of a Parcel of land coloured pink in the Ward of Siparia  
Containing nine hundred and thirty one point two square metres  
Surveyed by me, with due authority, in November, 2011  
Certified Correct in accordance with Regulation 25 (1) of the Land Surveyors' Regulations 1998,

Checked by *[Signature]*

Entered on *[Signature]* Trinidad & Tobago Land Surveyor. 29th December 2013.