

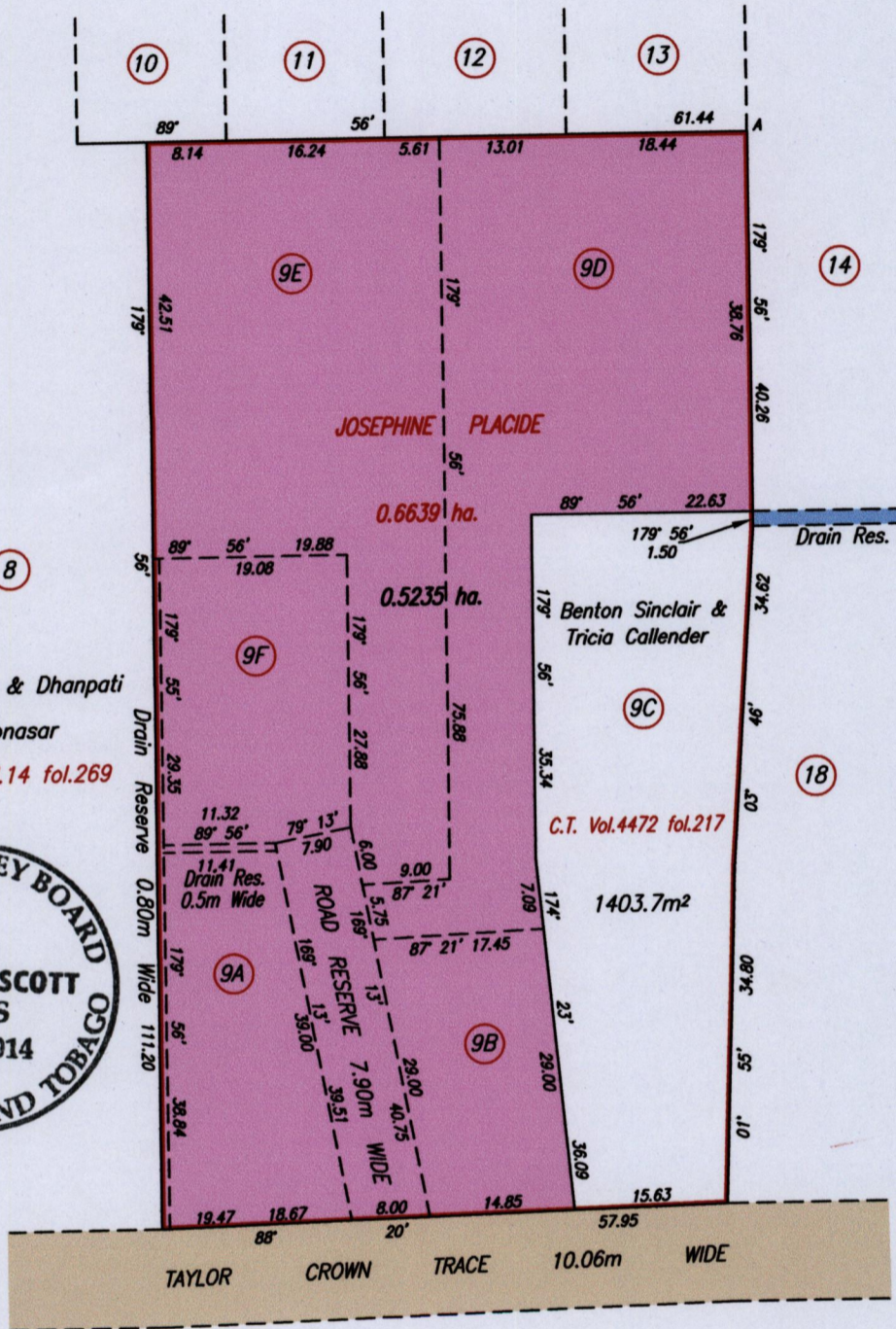
R.P.O.Vol. 14 Fol. 253
C.T.Vol. 3148 Fol. 173

Cadastral Sheet G.10.N. ^{64B}/_{4/d}
Ward of Savana Grande
County of Victoria

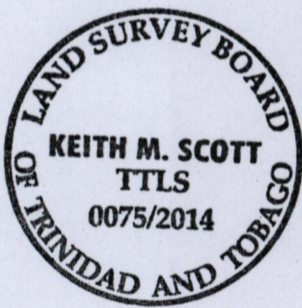
Vide General Plan in
C.T. Vol.4472 fol.207

Remaining Portion Plan

See Plan R.H.20
See Bk.1282 Fol.202



Boodram & Dhanpati
Moonasar
R.P.O. Vol.14 fol.269



A	E 684650.33
	N 1127998.05

Reliability Error ± 7.0 m.
Coordinates are UTM Zone 20, Naparima 1955 from
Garmin GPSmap 60CSx Handheld GPS Receiver

Approved
Director of Surveys 13/1/15

SCALE 1/1500
Distances are in metres

Cassini Grid bearings based on Solar Observations
To obtain compass bearings add 04 minutes
Plan of point six six three nine hectares originally transferred to Josephine Placide
showing a portion coloured pink and containing zero point five two three five hectares
being the remainder after one previous transfer of another portion of the land.
In accordance with Regulation 25 (1) of the Land Surveyors' Regulations 1998,
I certify that this represents the remaining portion

Checked by M.M. 3/11/2014

[Signature]

Entered on.....

Trinidad & Tobago Land Surveyor 10 October 2014