

R.P.O. Vol. 16 Fol. 569

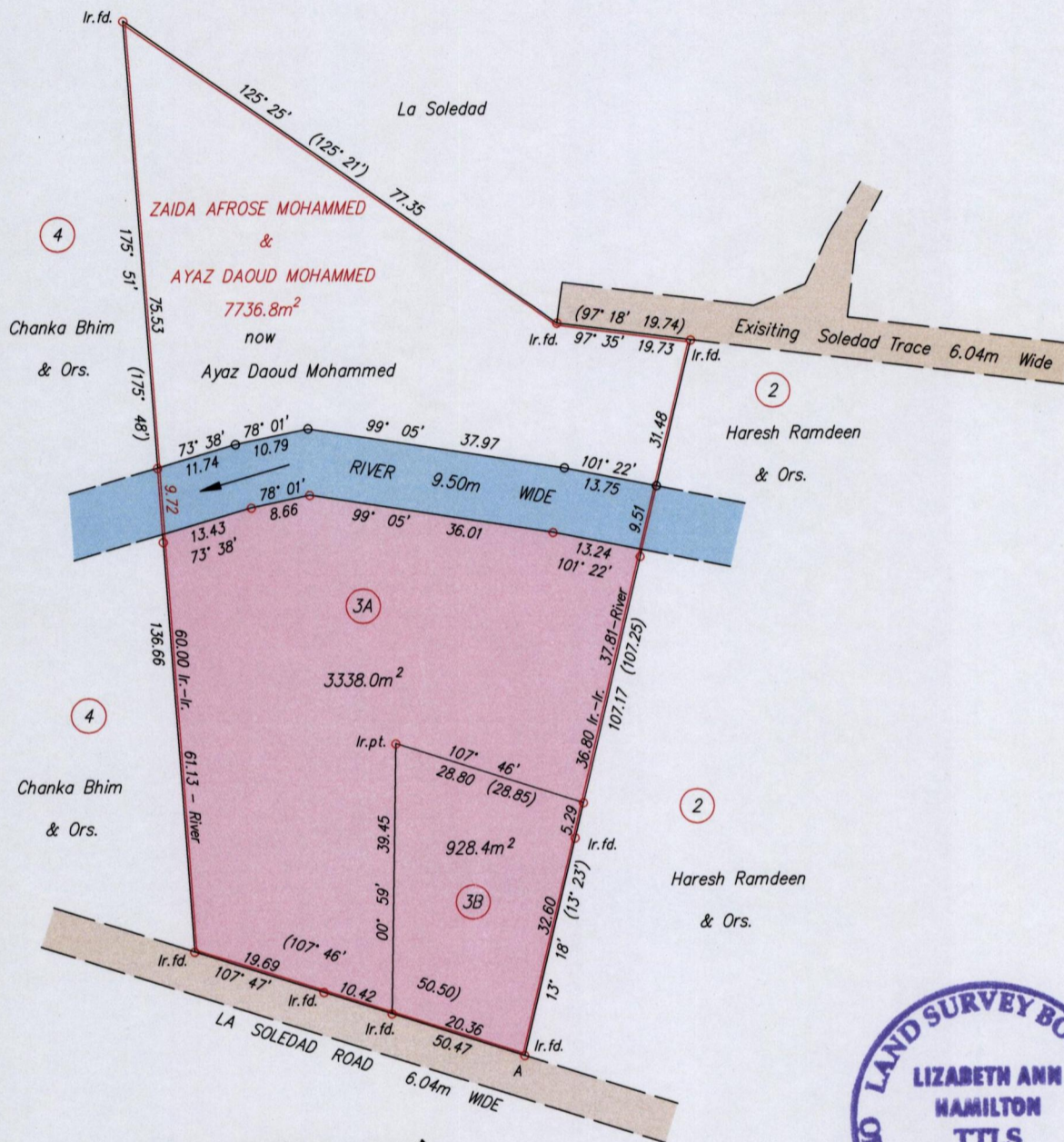
Ward of Pointe a Pierre

C.T. Vol. 5559 Fol. 189

County of Victoria

Cadastral Sheet D.22.B., 43F/3/c

VIDE Bk.1233 fol.203



Approved *[Signature]*
 Director of Survey *[Signature]*



A : 669899mE, 1145387mN

SCALE 1:1000

Co-ordinates are U.T.M. Zone 20 Naparima Datum +/-5m obtained from handheld G.P.S.

o denotes Ir.pt. unless otherwise stated
o denotes NM pt. unless otherwise stated

Bearings are U.T.M. Grid based on Solar Observations

Distances are in metres

PLAN of 2 Parcels of land coloured pink in the Ward of Pointe a Pierre

Containing together four thousand two hundred and sixty six point four square metres

Surveyed by me, with due authority, in November 2012

Certified Correct in accordance with Regulation 25(1) of the Land Surveyors Regulations 1998.

Checked by

Lizabeth Ann Hamilton

Entered

Trinidad & Tobago Land Surveyor *December 08* 2014