

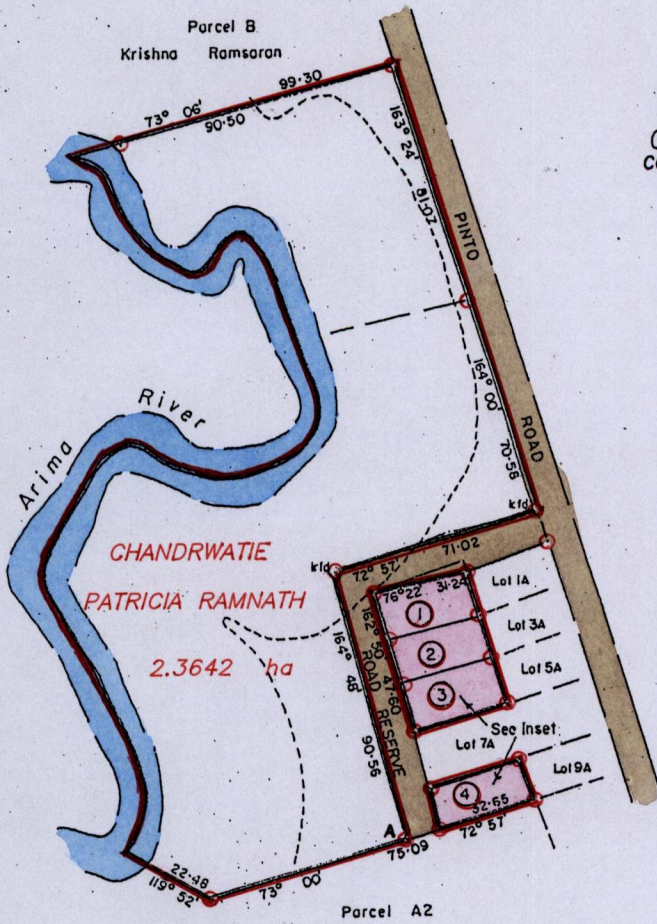
R.P.O.Vol. 2113 Fol. 93

C.T.Vol. 3143 Fol. 143

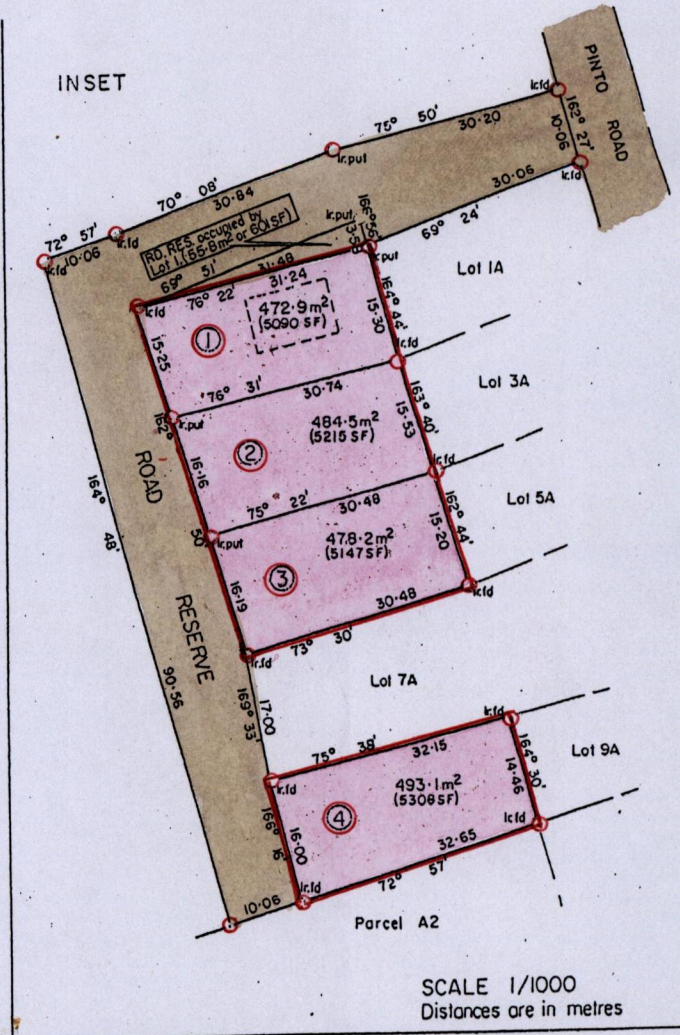
Ward of Arima

County of St. George

Cadastral Sheet B.25.A.  $\frac{24C}{2/c}$



G N  
CASSINI



SCALE 1/1000  
Distances are in metres

Approved

Director of Surveys

E 689138  
N 1175496  
A - Nap. Datum  
Handheld GPS  
± 3.0m

SCALE 1/2500

Distances are in metres



Note: Bearings based on Solar Observations

PLAN of 4 Parcels of land coloured pink in the Ward of Arima

Containing together one thousand nine hundred and twenty eight point seven square metres

Surveyed by me with due authority in March 1989

Certified correct in accordance with Regulation 25(1) of the Land Surveyors Regulations 1998

Checked by.....

Entered.....

Trinidad & Tobago Land. Surveyor. 24<sup>th</sup> November 2014