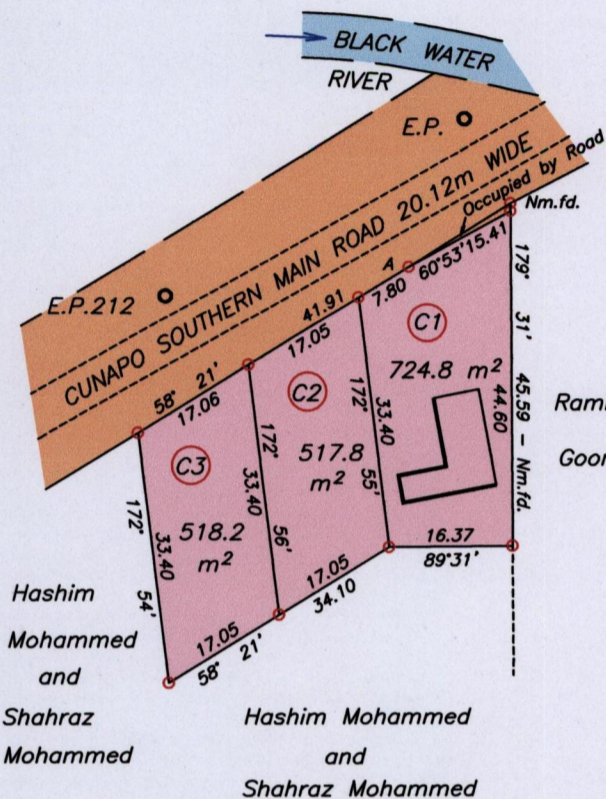


U.P.R.N No.....
R.P.O. Vol. 224 Fol. 593
C.T. Vol. 4354 Fol. 11

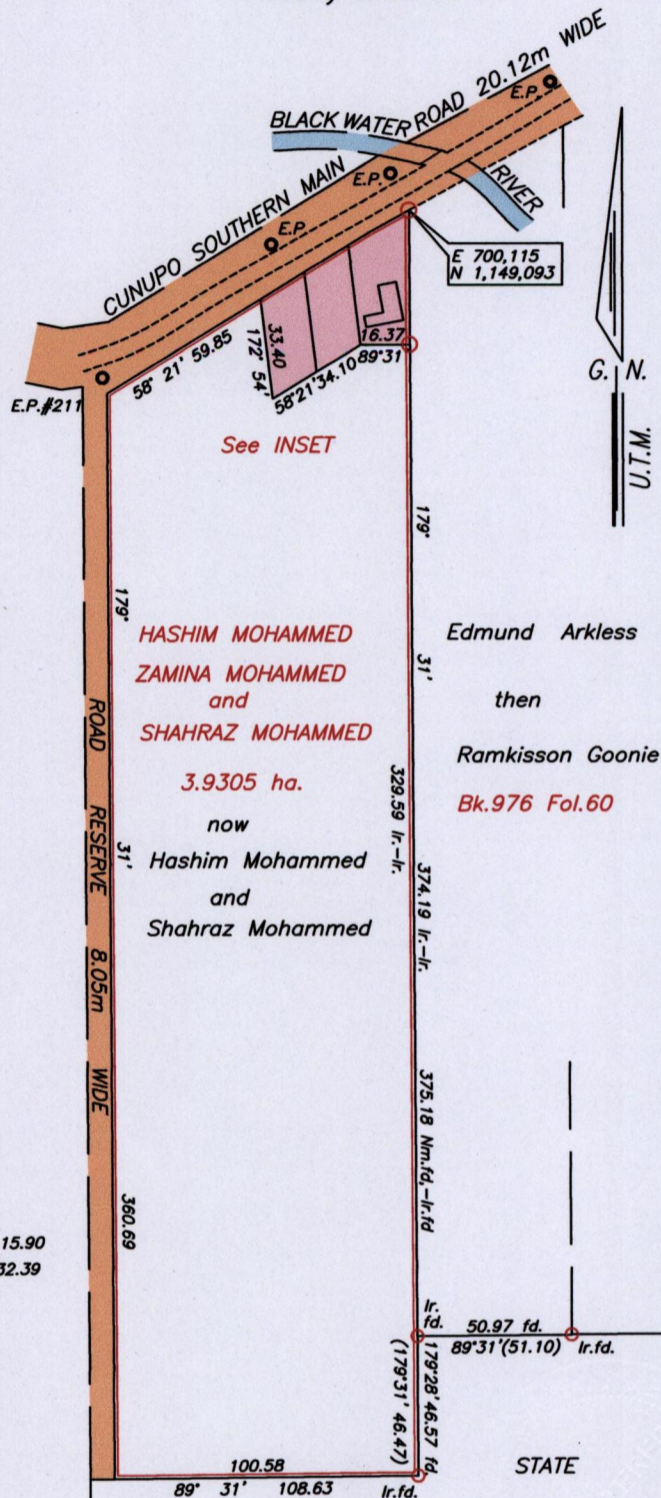
Cadastral Sheet E.16 K. 45E
Ward of Cocal
County of Nariva

INSET



SCALE 1/1000
Distances are in metres

A - Nm.f.d. 57° 45' 15.90
A - E.P. 212 263° 13' 32.39



See Bk.304 Fol.143
STATE S.O. No.845/1908

Approved.....
Director of Surveys 9/12/14

○ Denotes Iron put unless otherwise stated

Bearings are U.T.M. Grid based on Solar Observations

Note : To obtain cassini bearings add 18 minutes

Plan of 3 Parcels of land coloured pink in the Ward of Cocal

Containing together one thousand seven hundred and sixty point eight square meters

Surveyed by me, with due authority in February 2010

Certified correct in accordance with Regulation 25 (1) of the Land Surveyors' Regulations 1998

Checked by.....

Entered on..... Trinidad and Tobago Land Surveyor (TTLs)..... 07th Decemb. 2014

SCALE 1/2500

Distances are in metres

Co-ordinates obtained from hand held GPS.

WGS 84 U.T.M. Zone 20 +/- 3.00m

