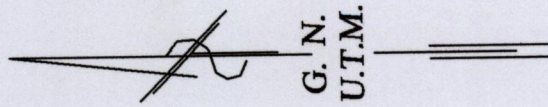
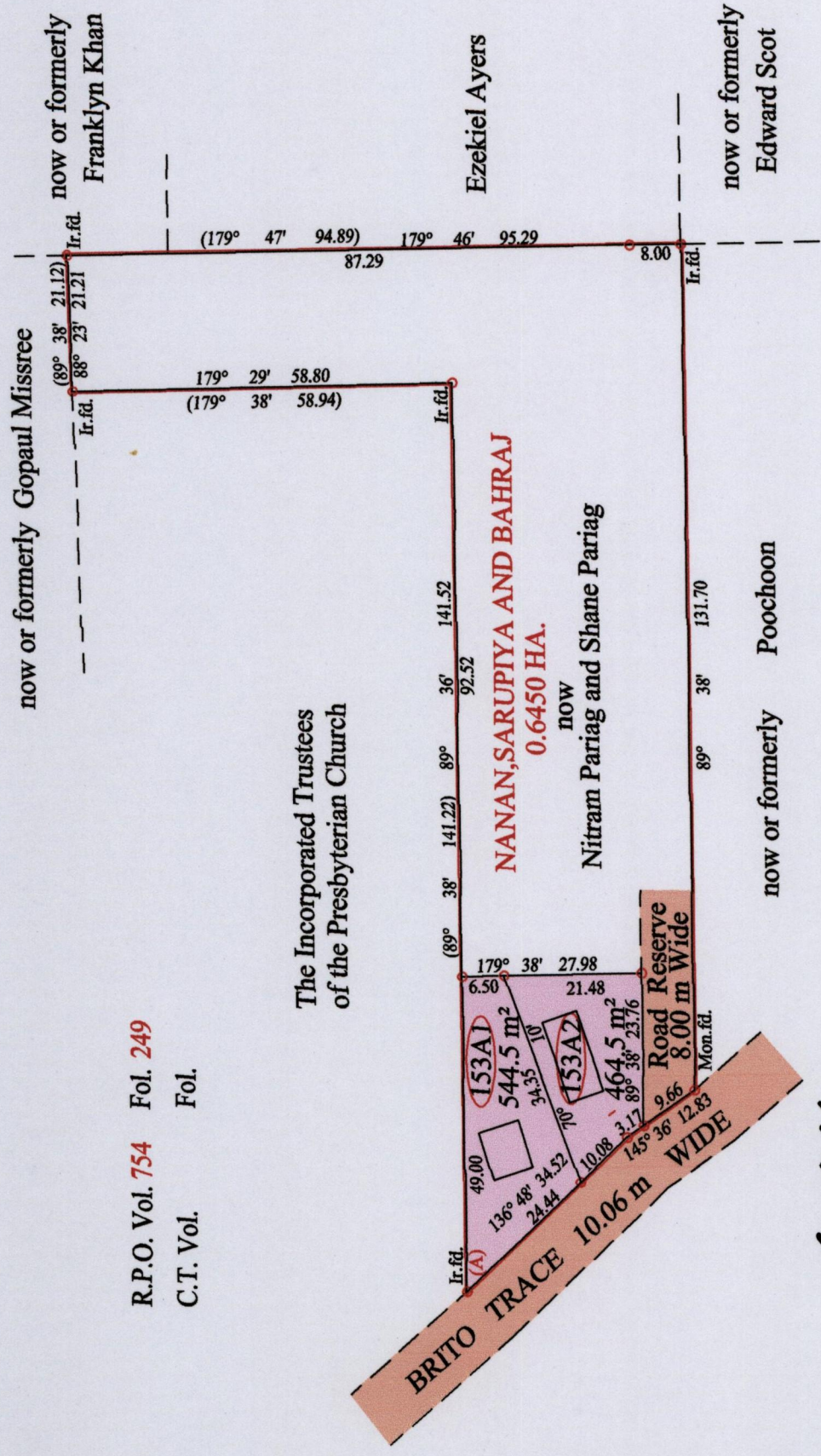


Ward of Charuma
County of Nariva
Cadastral Sheet D.25.I 54C.
2/c



Vide Plan K.D.29
Vide Bk. 732 fol. 149

At Station (A)
E 0688864
N 1142647
Reading taken with
Handheld G.P.S.
U.T.M. Zone 20
WGS84
± 5 m.



SCALE : 1:1000

Distances are in metres

o Denotes Iron put except stated otherwise.

Note: Bearings are U.T.M. grid based on solar observations

PLAN of 2 Parcels of land coloured pink in the Ward of Charuma

Containing together one thousand and nine point zero square metres

Surveyed by me, with due authority, in January 2012

Certified Correct in accordance with Regulation 25(1) of the Land Surveyors Regulations 1998

Checked by *[Signature]*

Entered on *[Signature]* Trinidad & Tobago Land Surveyor2014

R.P.O. Vol. 754 Fol. 249

C.T. Vol. Fol.

Approved *[Signature]*
Director of Surveys
01/12/14