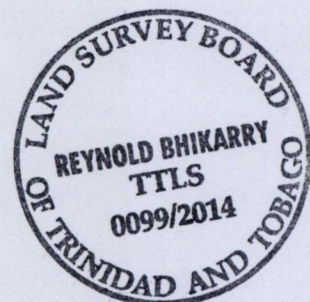
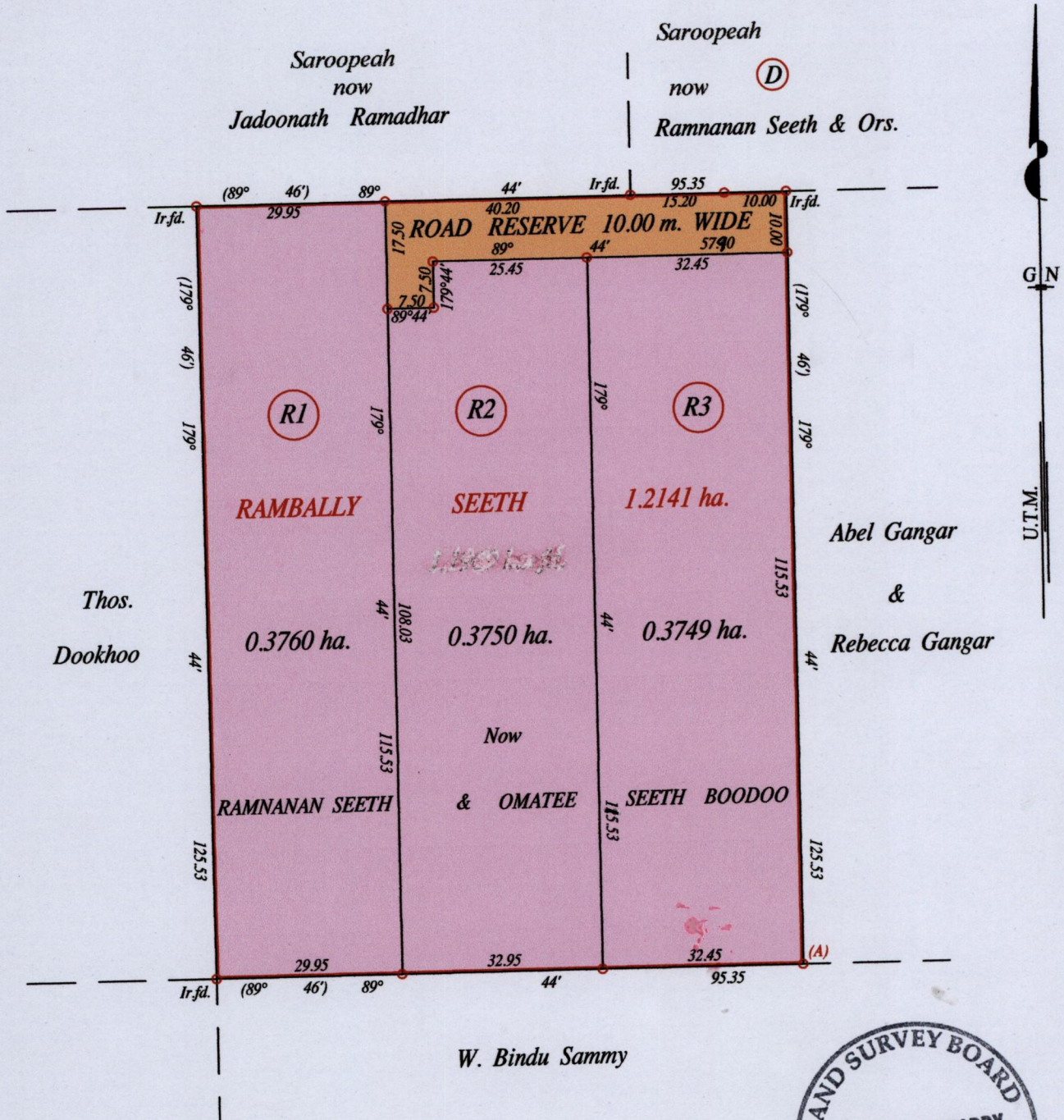


R.P.O. Vol. 212 Fol. 317  
C.T. Vol. 3457 Fol. 503

Ward of Siparia  
County of St. Patrick  
Cadastral Sheet G 13 K 63.F.  
Clarke Road, Penal. 4/a



Approved *[Signature]*  
Director of Surveys 2/11/14

At Station (A)  
E: 671824 N: 1123474  
Hand Held GPS.  
Naparima Datum (+/-10m)  
UTM Zone 20.

Vide Bk. 723 fol. 161

SCALE : 1:1000

o Denotes Iron put except stated otherwise.  
Note: Bearings are U.T.M. grid based on solar observations Distances are in metres  
PLAN of 3 Parcels of land coloured pink in the Ward of Siparia  
Containing together one point one two five nine hectares  
Surveyed by me, with due authority, in November 2012  
Certified correct in accordance with Regulation 25 (1) of the Land Surveyors' Regulations 1998.

Checked by R-19/1/14 *[Signature]*  
Entered on ..... Trinidad & Tobago Land Surveyor 5th January 2014