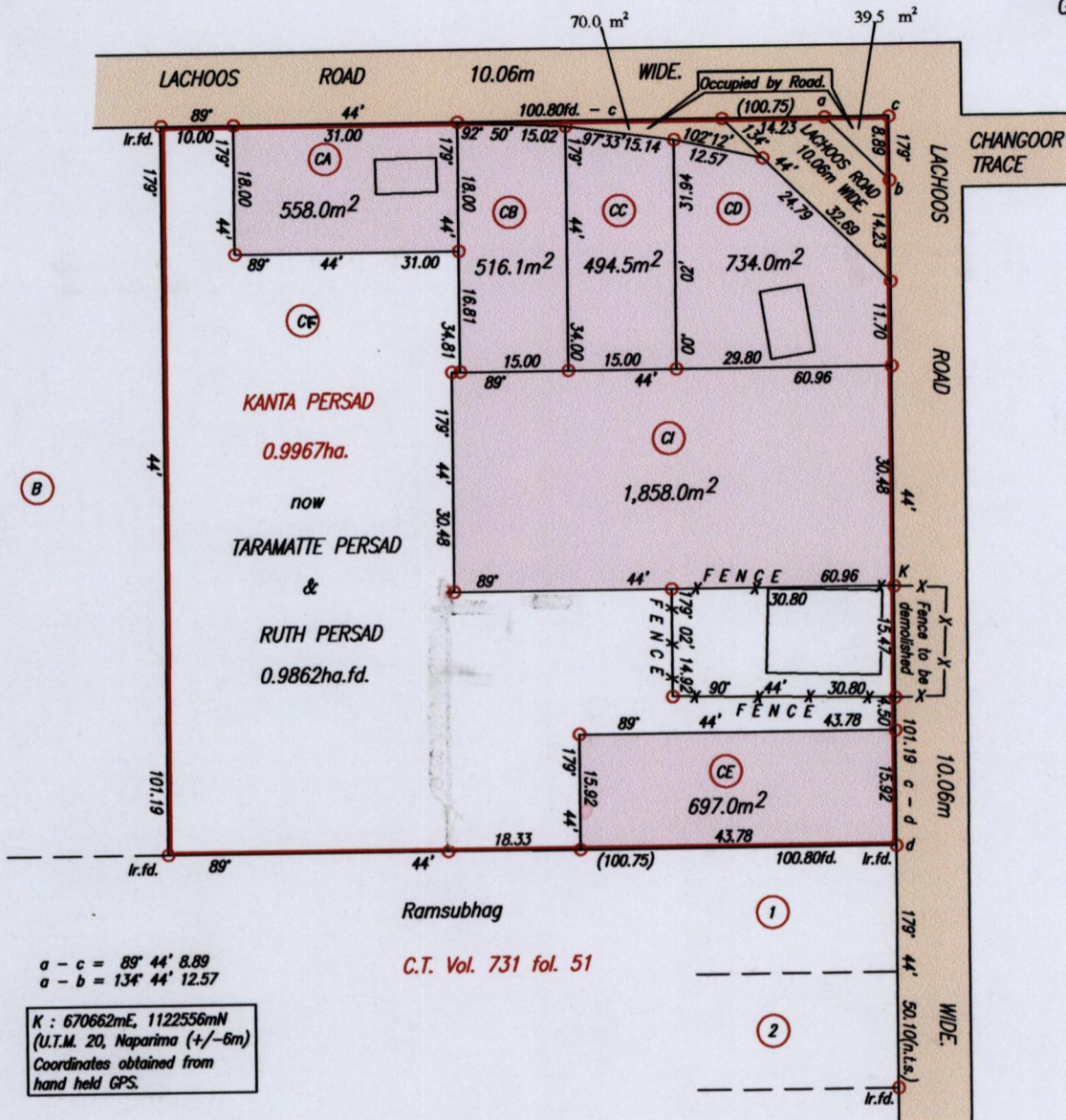


R.P.O. Vol. 161 Fol. 533
C.T. Vol. 5268 Fol. 353

Cadastral Sheet G.13.0 63F
Ward of Siparia 3/D
County of St.Patrick
Lachoos Road,
Penal

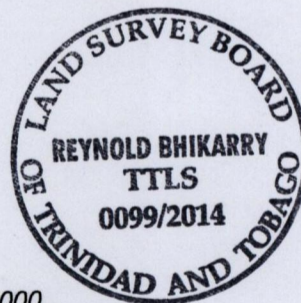
Ref. : Bk. 724 fol. 224

U.T.M.
G 11 W



$a - c = 89^\circ 44' 8.89$
 $a - b = 134^\circ 44' 12.57$
 K : 670662mE, 1122556mN
 (U.T.M. 20, Naparima (+/-6m))
 Coordinates obtained from
 hand held GPS.

C.T. Vol. 731 fol. 51



Approved *[Signature]*
Director of Surveys *[Signature]*

SCALE 1:1000
Distances are in Metres

○ Denotes Iron put except otherwise stated.
Bearings are U.T.M. Grid based on Solar Observations.

PLAN of 6 Parcels of land coloured pink in the Ward of Siparia
Containing together four thousand, eight hundred and fifty seven point six square metres.
Surveyed by me, with due authority, in May, 2013
Certified Correct in accordance with Regulation 25(1) of the Land Surveyors' Regulations 1998

Checked by *[Signature]* *[Signature]*
Entered Trinidad & Tobago Land Surveyor 28th March 2014