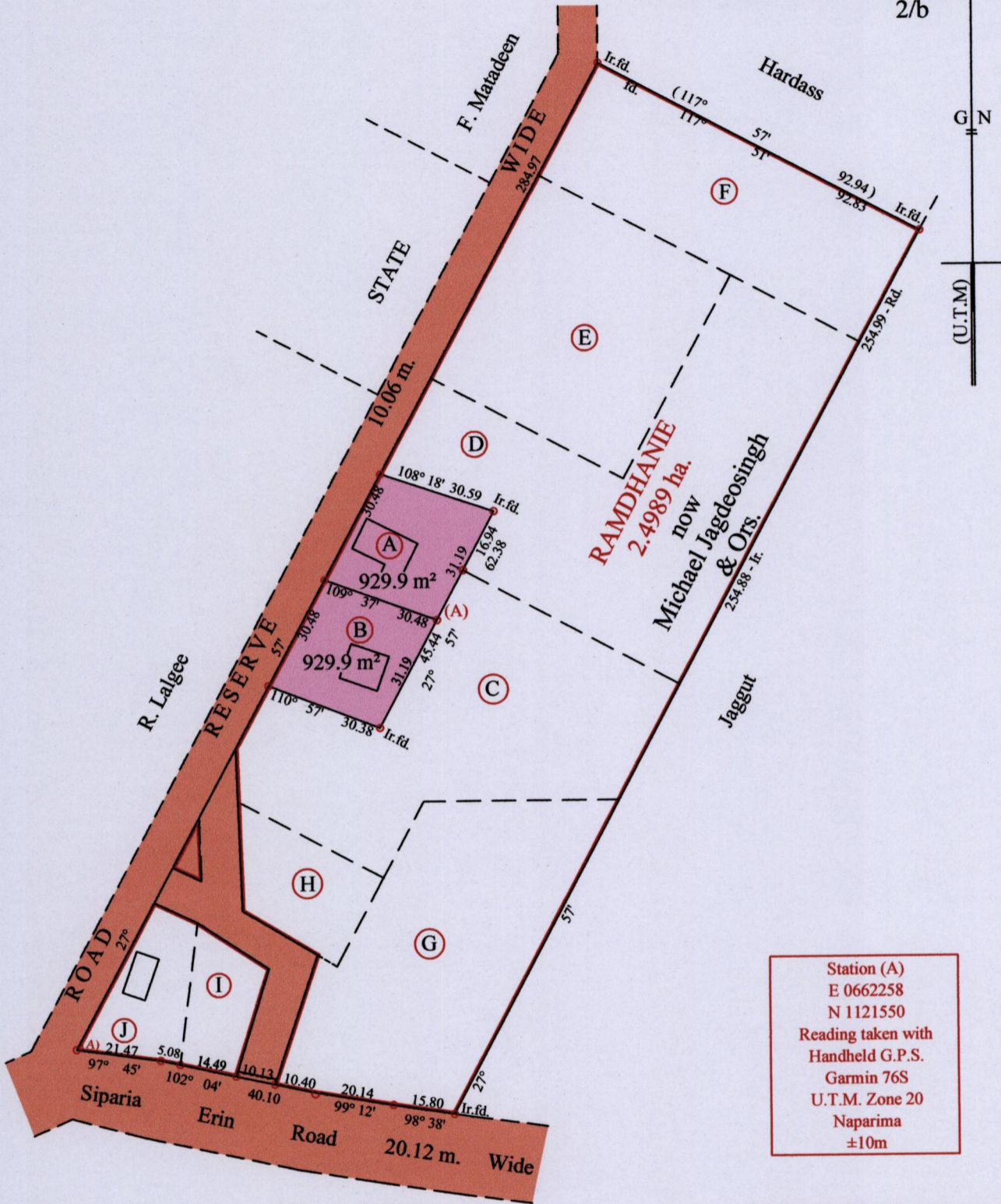


R.P.O. Vol. 124 Fol. 229
C.T. Vol. 2298 Fol. 245

Ward of Siparia.
County of St. Patrick.
Cadastral Sheet G.17.B. 73 A
2/b



Station (A)
E 0662258
N 1121550
Reading taken with
Handheld G.P.S.
Garmin 76S
U.T.M. Zone 20
Naparima
±10m

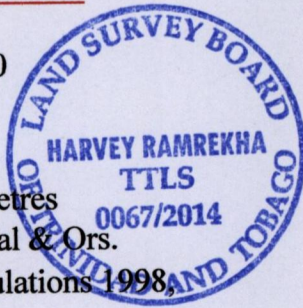
Approved *[Signature]*
Director of Surveys *[Signature]*

Vide Bk.1249 Vol.2 Fol. 95
Vide Bk. 470 Fol. 157

○ Denotes Iron put except stated otherwise.
Note: Bearings are U.T.M. grid based on solar observations Distances are in metres

SCALE : 1:1500

PLAN of 2 Parcels of land coloured pink in the Ward of Siparia.
Containing together one thousand eight hundred and fifty nine point eight square metres
Surveyed by me, with due authority, in August 2005 & October 2006 for Kawal Baal & Ors.
Certified Correct in accordance with Regulation 25 (1) of the Land Surveyors' Regulations 1998,



Checked by *[Signature]* *[Signature]*

Entered on Trinidad & Tobago Land Surveyor (TTLS) *6.11.2014* 2014