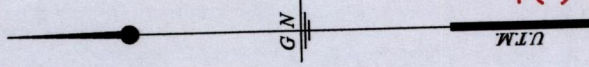


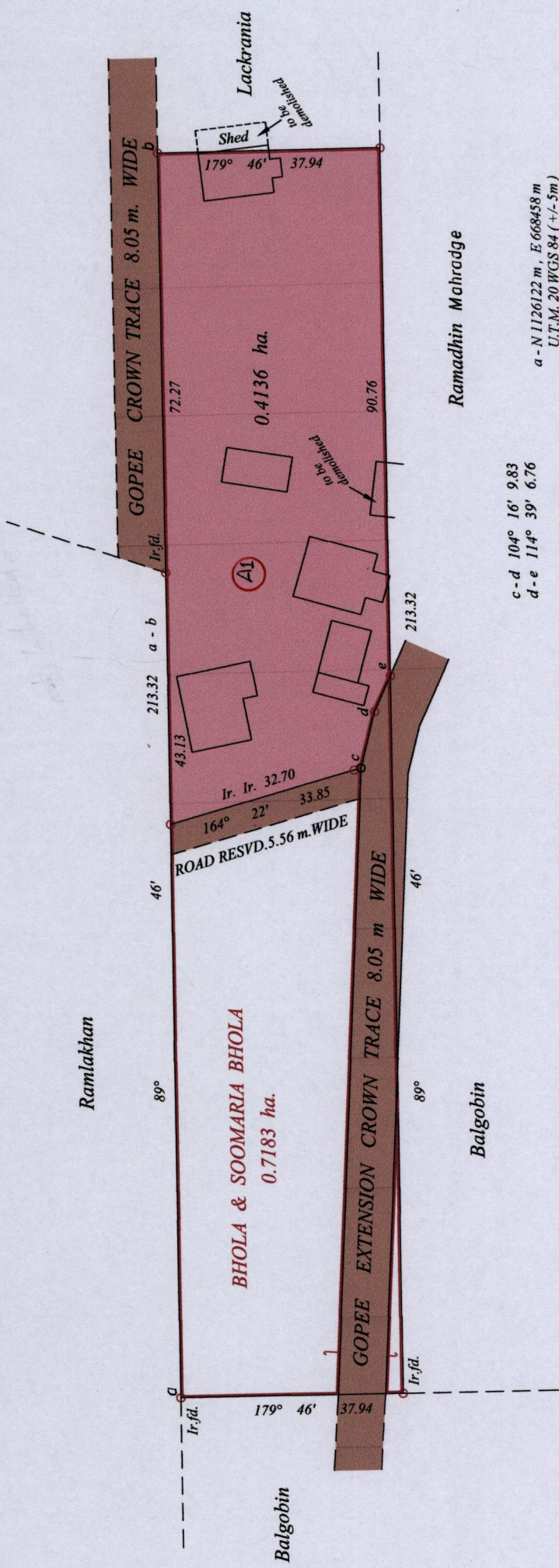
Ward of Siparia
 County of St. Patrick
 Cadastral Sheet G. 13 E. $\frac{63 E}{2/d}$

1655

174



R.P.O. Vol. 96 fol. 217
 C.T. Vol. 1828 fol. 375



a - N 1126122 m, E 668458 m
 U.T.M. 20 WGS 84 (+/- 5m)
 Coordinates obtained from
 Handheld G.P.S.

c-d 104° 16' 9.83
 d-e 114° 39' 6.76

Bk. 1010 fol. 168

SCALE : 1 : 1000

○ Denotes Iron Put Except
 Otherwise Stated

Approved
 Director of Surveys

Note: Bearings are U.T.M. grid based on solar observations
 Distances are in metres
 PLAN of a Parcel of land coloured pink in the Ward of Siparia
 Containing zero point four one three six hectares
 Surveyed by me, with due authority, in December 2013
 Certified Correct in accordance with Regulation 25 (1) of the Land Surveyors
 Regulations 1998.



Checked by *H. 01/10/14*
Shervon Phriday

Entered on Trinidad & Tobago Land Surveyor 26th June 2014