

R.P.O. Vol. 817 Fol. 421

C.T. Vol. Fol.

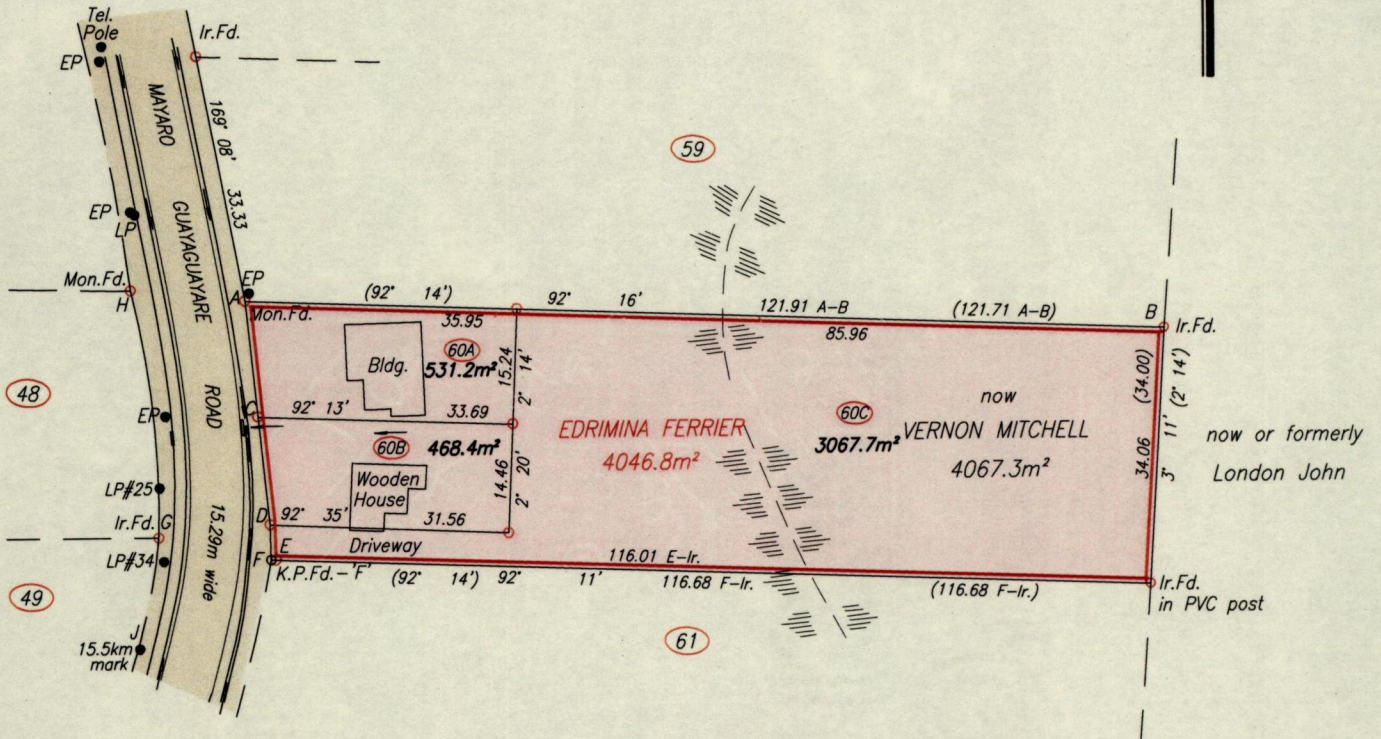
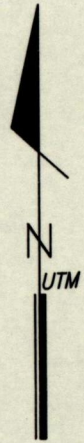
Cadastral Sheet H.15.I. 66E
4/b

Ward of Guayaguayare

County of Mayaro

'La Savanne Settlement'
Newlands, Guayaguayare

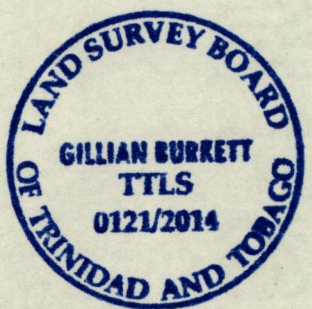
Ref.: Plan K.D.17



Approved.....
Director of Surveys
25/11/14

A = N 1123822 } Handheld GPS
E 718119 } UTM-Nap. ±5m

LEGEND	
F	K.P.Fd.
J	15.5km mark
LP	Light Pole
EP	Electricity Pole
	Ridge



LINE	BEARING	DISTANCE(m)
H-G	173° 39'	33.01
A-C	173° 49'	15.41
C-D	173° 49'	14.42
D-E(Ir.Put)	170° 33'	4.83
D-F(K.P.Fd.)	178° 30'	4.74
H-A	95° 45'	15.21
G-E	101° 26'	15.80
G-LP#25	0° 56'	6.68
G-LP#34	168° 26'	3.27
G-J	189° 49'	15.07

SCALE 1/1000
Distances are in metres

- o Denotes Ir. Put except otherwise stated
- o Denotes K.P. Fd. except otherwise stated

Bearings are UTM Grid based on Solar Observations

Plan of 3 parcels of land coloured pink in the Ward of Guayaguayare
Containing together four thousand and sixty-seven point three square metres
Surveyed by me, with due authority, in October 2013 & September 2014
Certified Correct in accordance with Regulation 25 (1) of the Land Surveyors' Regulations 1998.

Checked by
Trinidad & Tobago Land Surveyor

Entered on
18TH NOVEMBER 2014