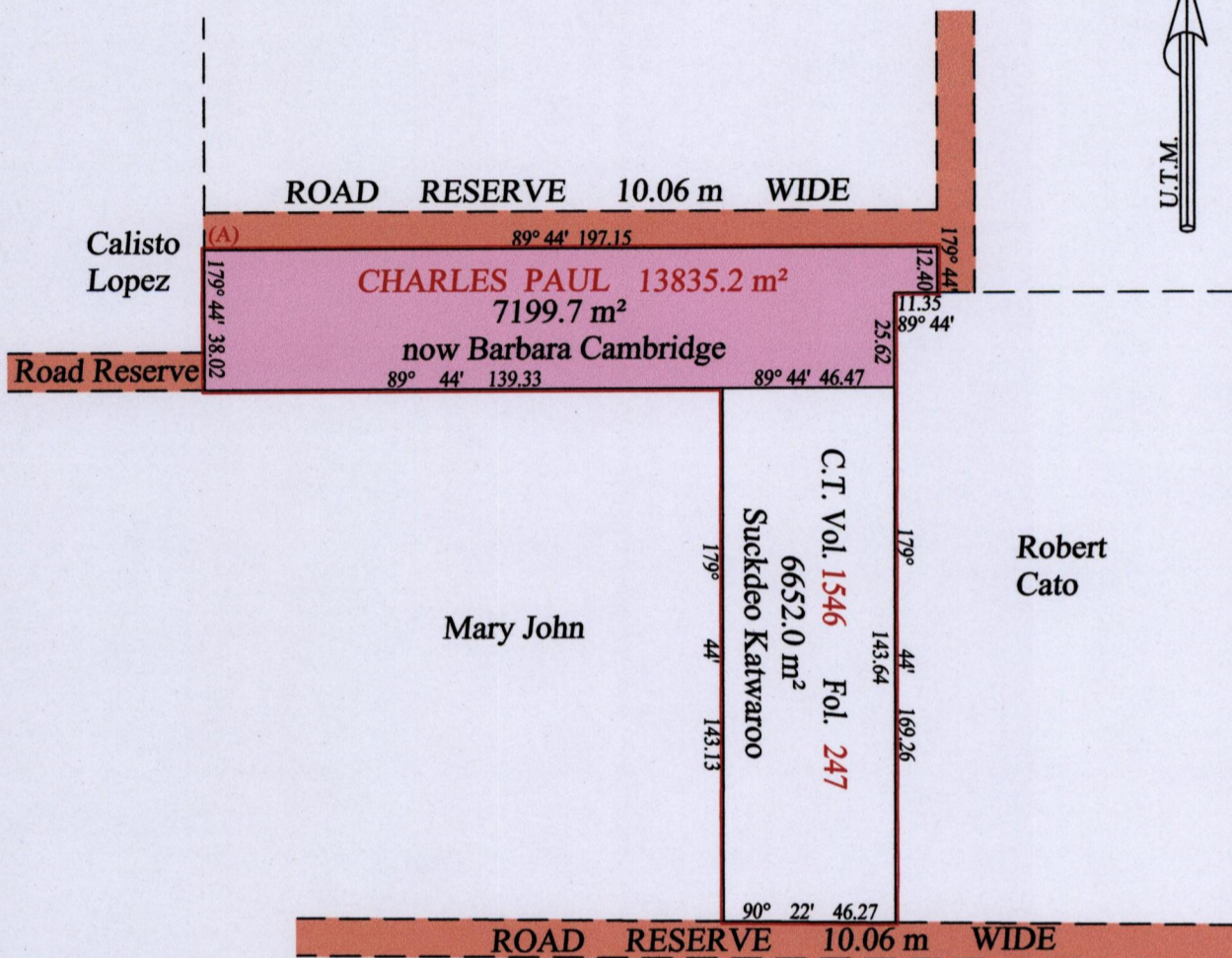


REMAINING PORTION PLAN

R.P.O. Vol. 679 Fol. 213
C.T. Vol. Fol.

Ward of Siparia
County of St. Patrick
Cadastral Sheet G.18.G 73C
1/d



At Station (A)
 E 0670555
 N 1119313
 Reading taken with
 Handheld G.P.S.
 U.T.M. Zone 20
 Naparima
 ± 5 m.

Vide Bk. 944 fol. 303

Approved *[Signature]*
Director of Surveys 27/11/14

SCALE : 1:2000

Note: Bearings are U.T.M. grid based on solar observations Distances are in metres
 Plan of thirteen thousand eight hundred and thirty five point two square metres
 originally transferred to Charles Paul, showing a portion
 coloured pink and containing seven thousand one hundred and ninety nine point seven square metres
 being the remainder after one (1) previous transfer of another portion of the land.
 In accordance with Regulation 25(1) of the Land Surveyors Regulations 1998
 I certify that this plan represents the remaining portion

Checked by *[Signature]*

Entered on Trinidad & Tobago Land Surveyor 4. 11 . 2014

