

R.P.O. Vol. 16 Fol. 569

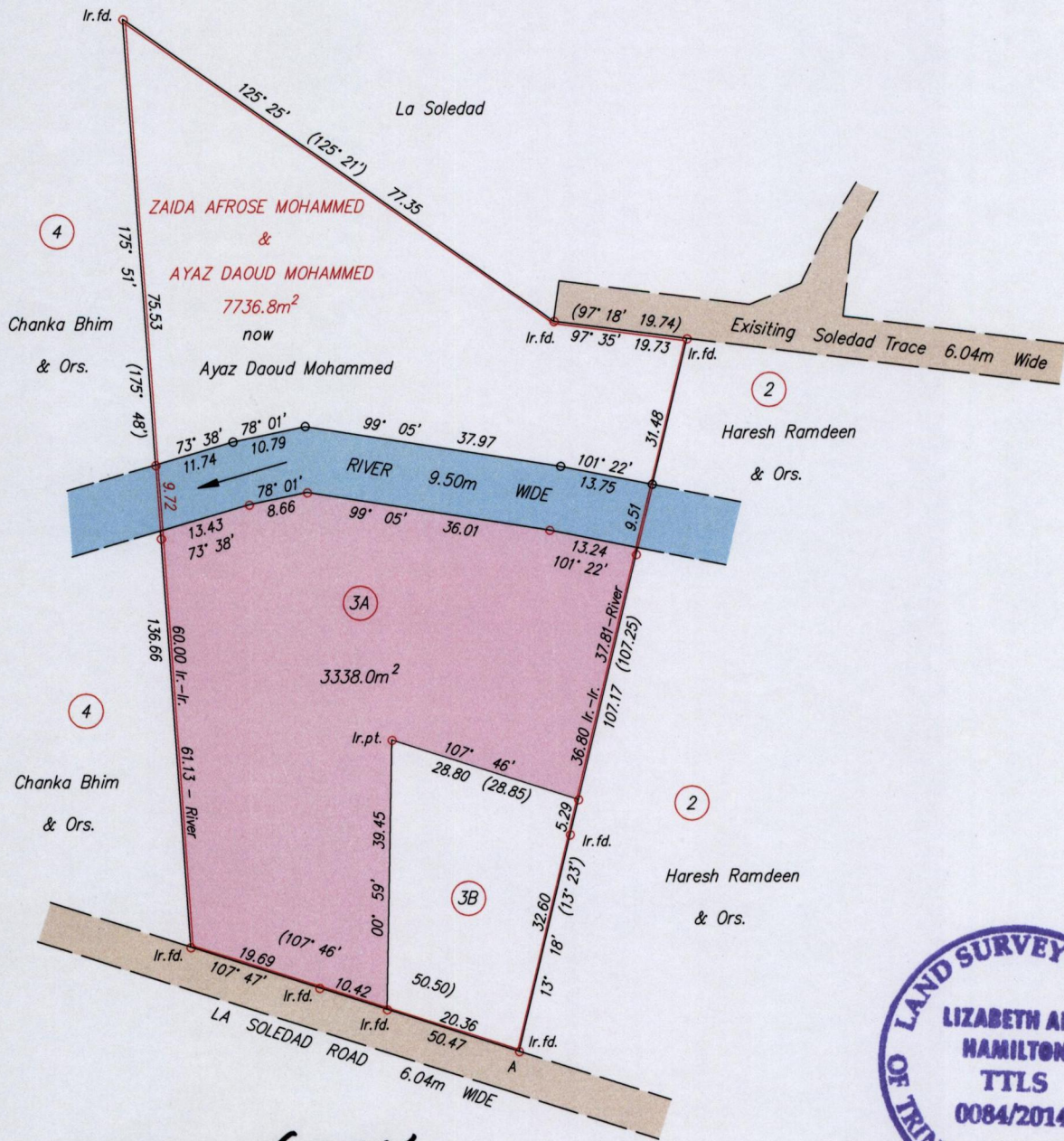
Ward of Pointe a Pierre

C.T. Vol. 5559 Fol. 189

County of Victoria

Cadastral Sheet D.22.B., 43F
3/c

VIDE Bk.1233 fol.203



Approved

Director of Surveys

[Signature]
19/11/14



A : 669899mE, 1145387mN

Co-ordinates are U.T.M. Zone 20 Naparima Datum +/-5m
obtained from handheld G.P.S.

SCALE 1:1000

- o denotes lr.pt. unless otherwise stated
- o denotes NM pt. unless otherwise stated

Bearings are U.T.M. Grid based on Solar Observations

Distances are in metres

PLAN of a Parcel of land coloured pink in the Ward of Pointe a Pierre

Containing three thousand three hundred and thirty eight point zero square metres

Surveyed by me, with due authority, in November 2012

Certified Correct in accordance with Regulation 25(1) of the Land Surveyors Regulations 1998.

Checked by

Lizabeth Ann Hamilton

Entered

Trinidad & Tobago Land Surveyor *October 21* 2014