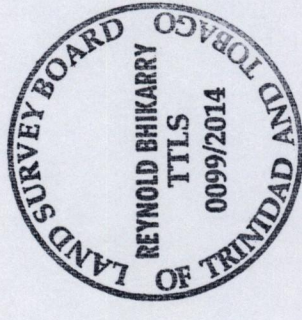
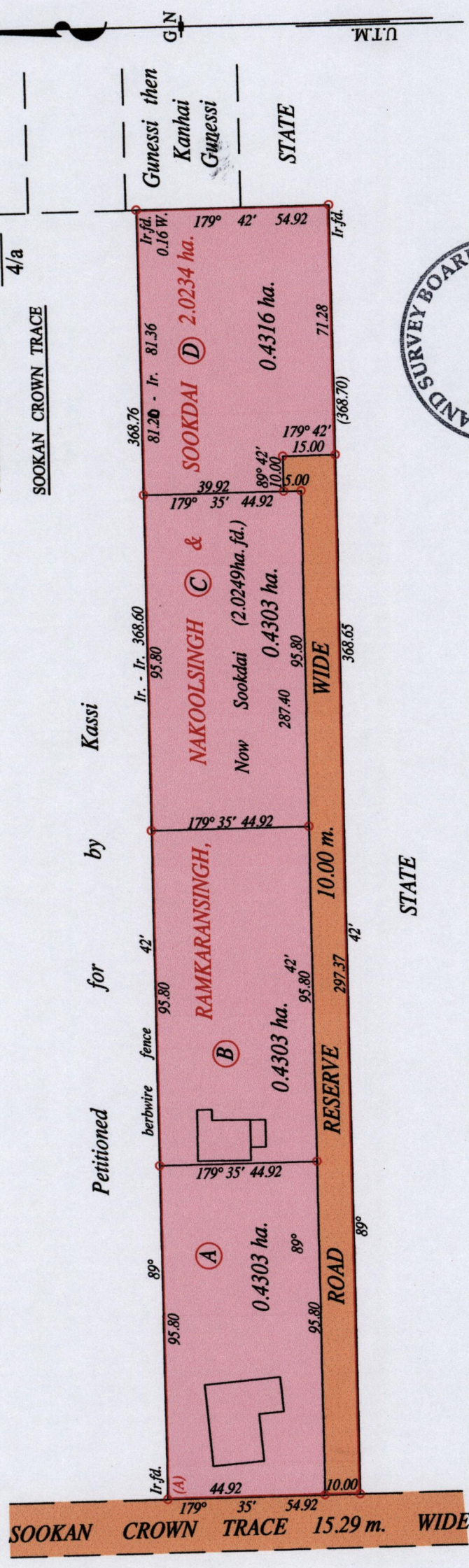


R.P.O. Vol. 692 Fol. 73
C.T. Vol. 4323 Fol. 285

Ward of Moruga
County of Victoria
Cadastral Sheet G 14 J 64.D.
4/a
SOOKAN CROWN TRACE



At Station (A)
E: 676918 N: 1123998
Hand Held GPS.
Naparima Datum (+1.5m)
UTM Zone 20.

Vide Bk. 638 fol. 278
Vide Bk. 1175 fol. 152

SCALE : 1:1500

Approved
Director of Surveys 15/7/14

o Denotes Iron put except stated otherwise.

Note: Bearings are U.T.M. grid based on solar observations

Distances are in metres

PLAN of 4 Parcels of land coloured pink in the Ward of Moruga

Containing together one point seven two two five hectares

Surveyed by me, with due authority, in 4th November 2009

Certified correct in accordance with Regulation 25 (1) of the Land Surveyors' Regulations 1998.

Checked by M.A. 10/7/2014 R. S. ...

Entered on Trinidad & Tobago Land Surveyor ... 4th April 2014