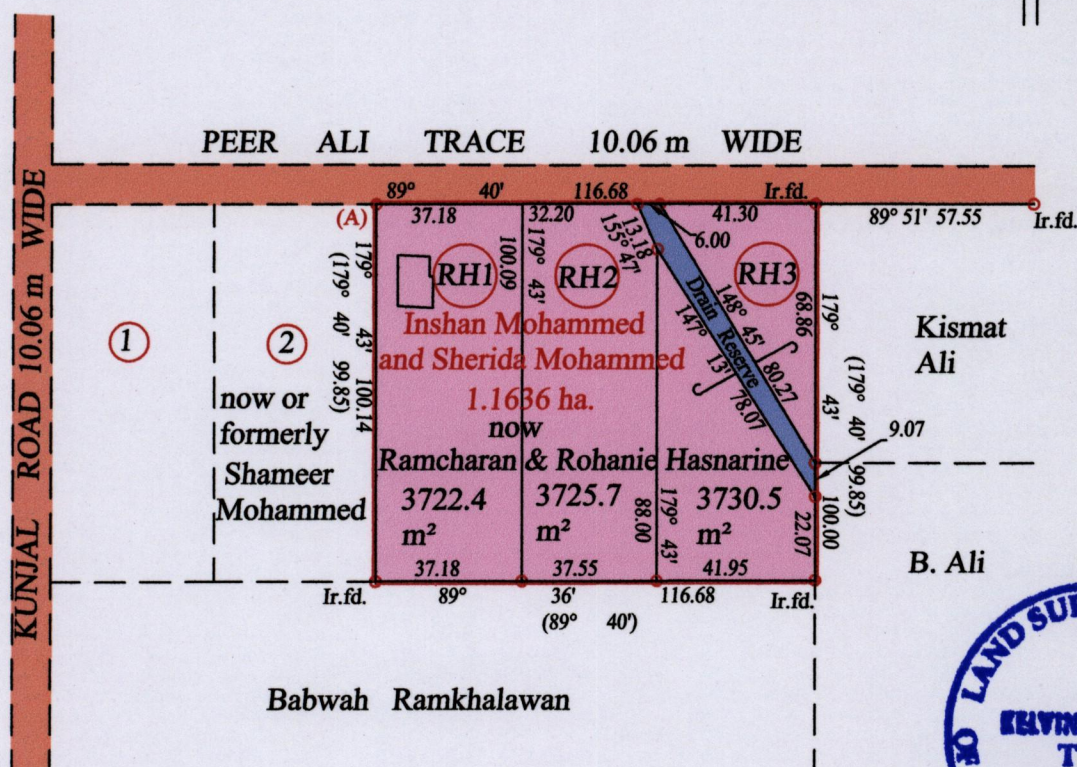
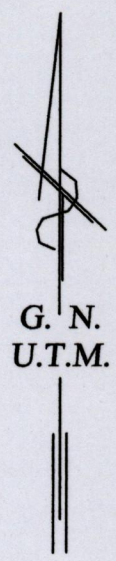


R.P.O. Vol. 228 Fol. 13
C.T. Vol. 4318 Fol. 515

Ward of Savana Grande
County of Victoria
Cadastral Sheet G.14.D 64.E.
1/a



Vide Bk. 1282 fol. 119

At Station (A)
E 0680000
N 1126870
Reading taken with
Handheld G.P.S.
U.T.M. Zone 20
WGS84
± 5 m.

Approved
Director of Surveys 12/11/14

o Denotes Iron put except stated otherwise. SCALE : 1:2000

Note: Bearings are U.T.M. grid based on solar observations Distances are in metres

PLAN of 3 Parcels of land coloured pink in the Ward of Savana Grande
Containing together eleven thousand one hundred and seventy eight point six square metres
Surveyed by me, with due authority, in November 2012

Certified Correct in accordance with Regulation 25(1) of the Land Surveyors Regulations 1998

Checked by Kelvin Ramdass

Entered on Trinidad & Tobago Land Surveyor 05/06/2014