

R.P.O. Vol. 225 Fol. 51
C.T. Vol. 4727 Fol. 107

Ward of Montserrat
County of Victoria
Cadastral Sheet D.19.N., 44E
4/a

Coordinates

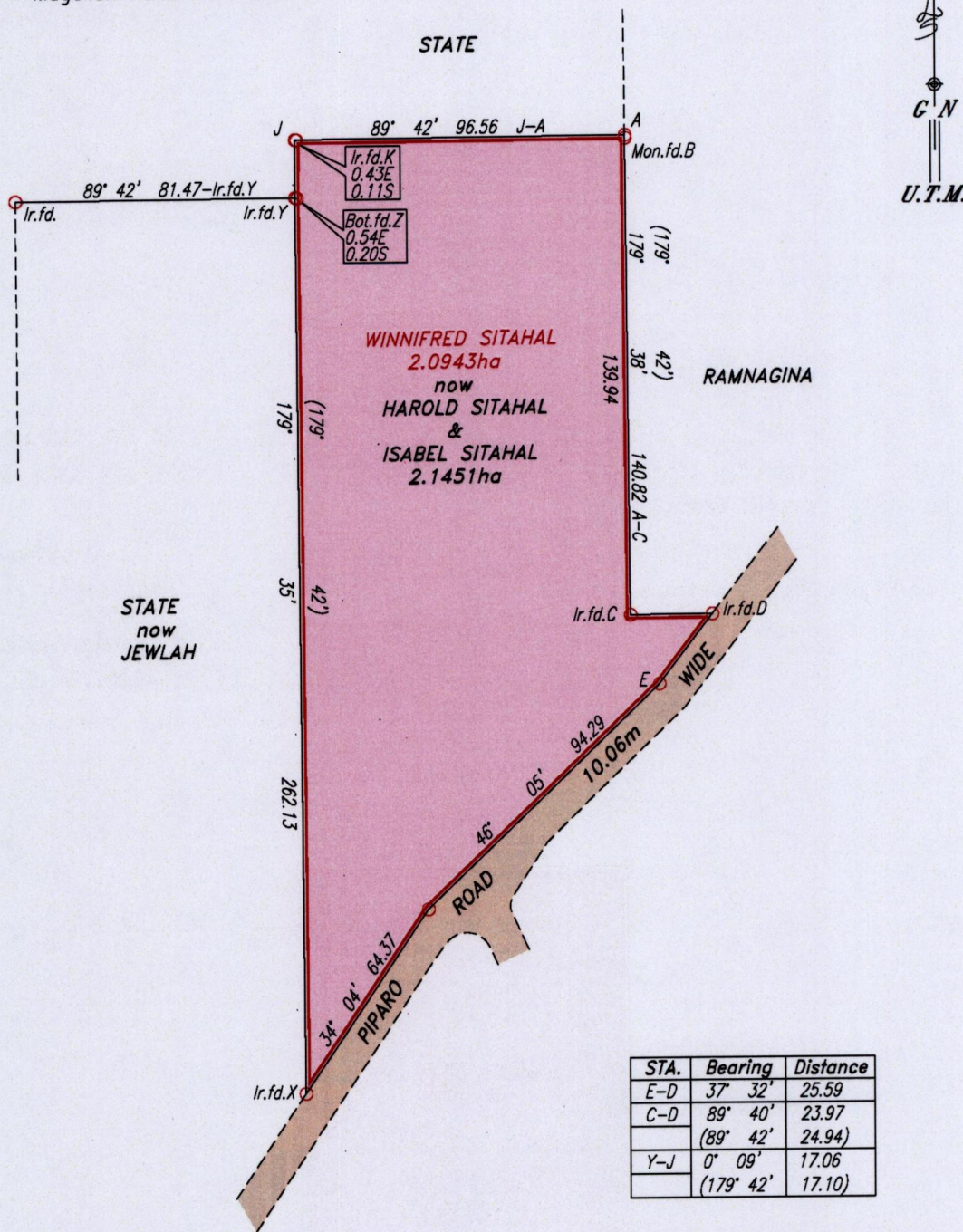
Ir.f.d. X :N 1146498
E 683280

Error Statement : ±3m

Datum Definition : U.T.M. Zone 20 Naparima

Source : Magellan Hand Held GPS

Parcel Address: Ep#78 Piparo Road,
Piparo.



STA.	Bearing	Distance
E-D	37° 32'	25.59
C-D	89° 40'	23.97
	(89° 42')	24.94
Y-J	0° 09'	17.06
	(179° 42')	17.10

Ref: Bk. 275 Fol. 74
Bk. 277 Fol. 145

SCALE 1:2000

Approved.....
Director of Surveys *[Signature]*

○ Denotes Iron put except otherwise stated.

Note: Bearings are U.T.M. grid based on solar observations. Distances are in metres.

Plan of a Parcel of land coloured pink in the Ward of Montserrat

Containing two point one four five one hectares.

Surveyed by me, with due authority, in October 2014.

Certified correct in accordance with Regulation 25 (1) of the Land Surveyors Regulations 1998.

Checked by.....

Entered

Trinidad & Tobago Land Surveyor

[Signature]
7/11/14

