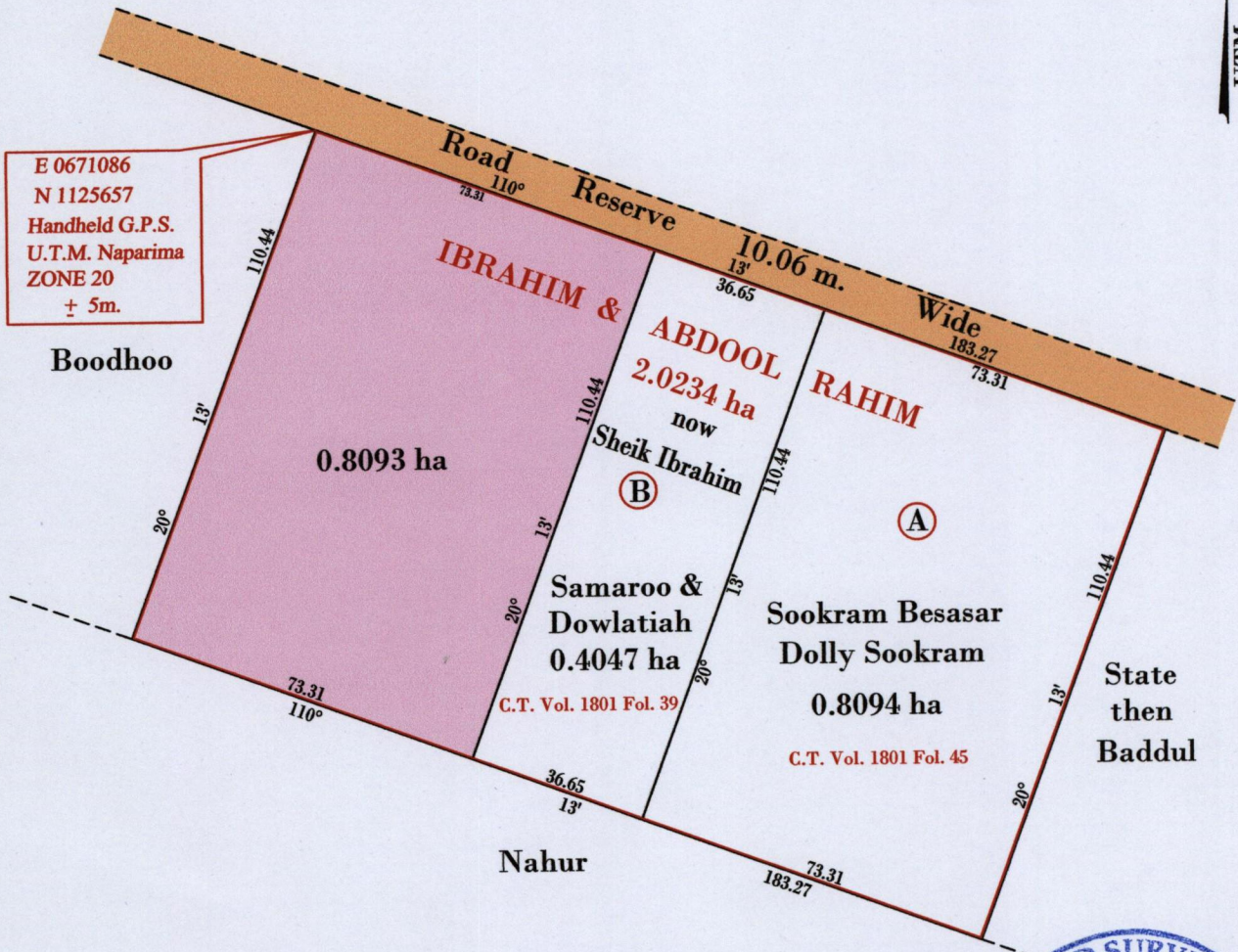


R.P.O. Vol. 103 Fol. 629
C.T. Vol. 1151 Fol. 147

REMAINING PORTION

Ward of Siparia
County of St Patrick
Cadastral Sheet G 13 G, 63 F
4/d



E 0671086
N 1125657
Handheld G.P.S.
U.T.M. Naparima
ZONE 20
± 5m.



Vide Bk. 1014 fol. 210
Vide Bk. 1005 fol. 4

Approved *[Signature]*
Director of Surveys 11/9/14

SCALE : 1:1500

Note: Bearings are U.T.M. grid based on solar observations Distances are in metres
Plan of two point zero two three four hectares, originally transferred to Ibrahim & Abdool Rahim, shewing a portion coloured pink and containing zero point eight zero nine six hectares being the remainder after two (2) previous transfer of another portion of the land.
In accordance with Regulation 25 (1) of the Land Surveyors Regulations 1998, I certify that this plan represents the remaining portion.

Checked by *[Signature]*

Entered on Trinidad & Tobago Land Surveyor 15th October 2014