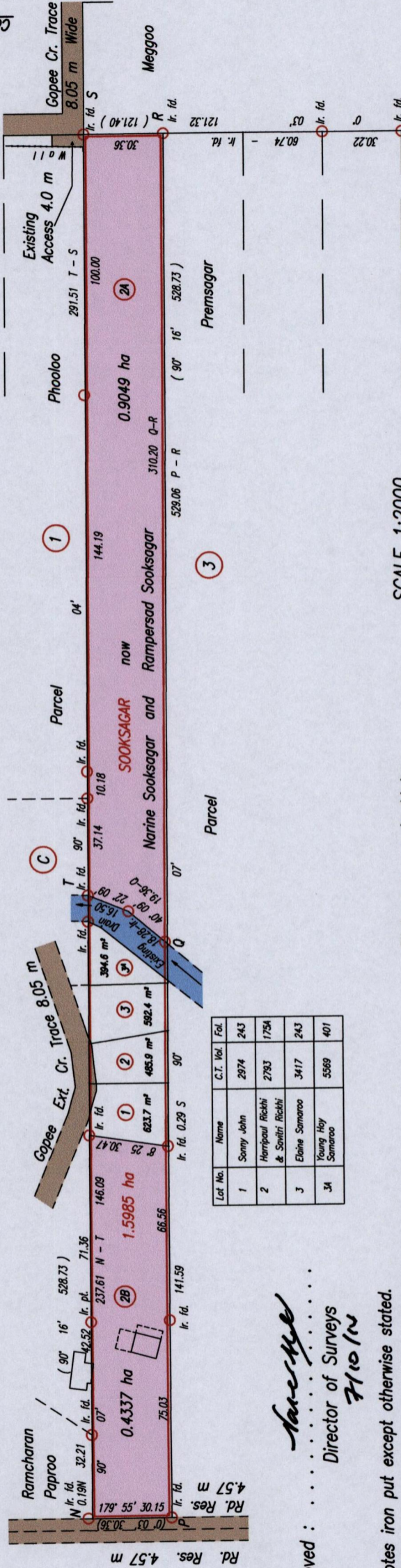


Ward of Siparia  
 County of St. Patrick  
 Cadastral Sheet G.13. E. & F. 63E  
 2/d

R.P.O. Vol. 96 Fol. 217  
 C.T. Vol. 1888 Fol. 435

Plan References  
 Bk. 1010 : 187  
 Bk. 1137 : 198  
 Bk. 1233 : 163



SCALE 1:2000

Distances are in Metres

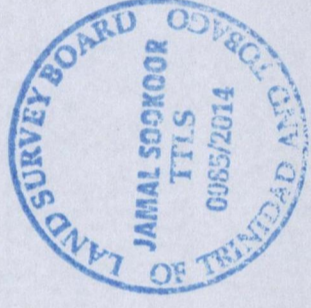
Plan of two Parcels of land coloured pink in the Ward of Siparia Containing together one point three three eight six hectares. Surveyed by me, with due authority, in March 2010 and November 2012. Certified Correct in accordance with Regulation 25(1) of the Land Surveyors' Regulations 1998,

Approved : *Saree Me*  
 Director of Surveys  
 7/10/14

○ denotes iron put except otherwise stated.  
 Bearings are Cassini Grid based on solar observations.

Checked by *JA* 01/OCT/2014  
*Jamal Sooksagar*

Entered : . . . . .  
 Trinidad & Tobago Land Surveyor 10th September 2014



R = E 66894m ; N 1126107m  
 Observation from handheld GPS  
 UTM WGS84 ±3m