

1655

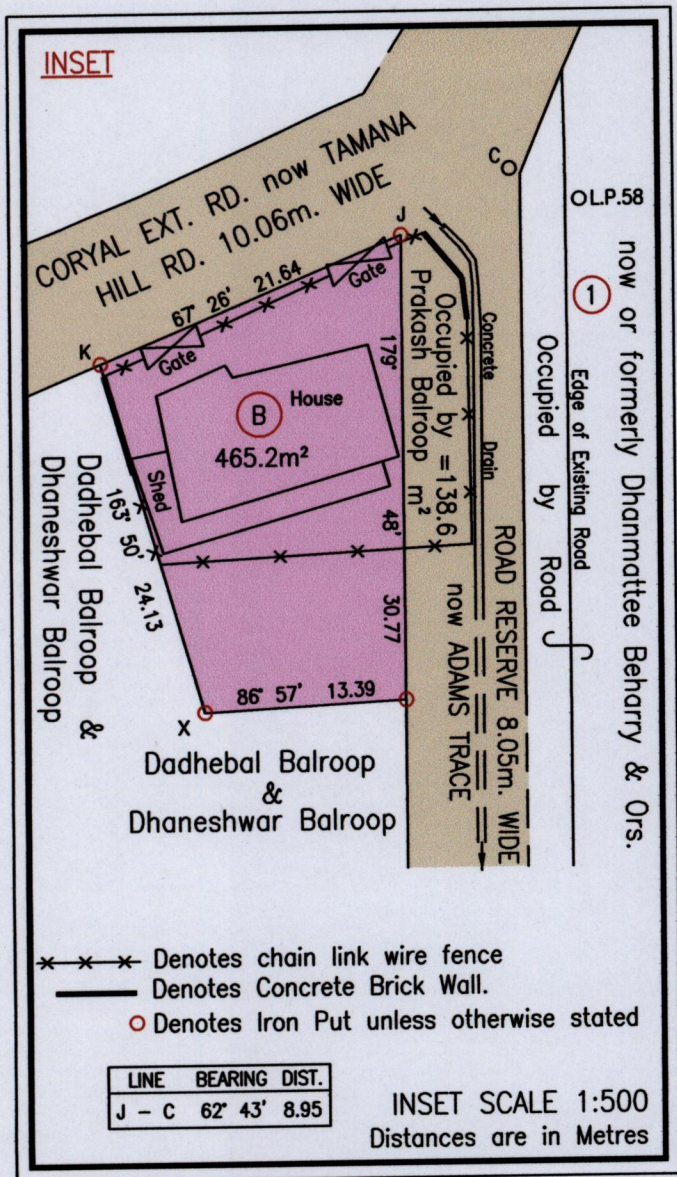


109

R.P.O. Vol. 46 Fol. 37
 C.T. Vol. 406 Fol. 161
 U.P.I.N. No.

Cadastral Sheet $\frac{35E}{1/b,1/d}$, E.6.J.&N.
 Ward of Tamana
 County of St. Andrew

"L.P. 58 TAMANA HILL ROAD, TAMANA"



---x---x--- Denotes chain link wire fence
 ————— Denotes Concrete Brick Wall.
 ○ Denotes Iron Put unless otherwise stated

LINE	BEARING	DIST.
J - C	62° 43'	8.95

INSET SCALE 1:500
 Distances are in Metres

Approved

[Signature]

Director of Surveys

7/10/14

X	E	698667.14
	N	1159888.67

Reliability Error ± 5.0 m.
 Coordinates are UTM Zone 20, Naparima 1955 from
 Garmin GPSmap 60CSx Handheld GPS Receiver

○ Denotes Iron Put unless otherwise stated
 Bearings are Cassini Grid based on Solar Obs.

Plan of a Parcel of land coloured pink in the Ward of Tamana
 Containing four hundred and sixty five point two square metres
 Surveyed by me, with due authority, in January 2013

Certified correct in accordance with Regulation 25(1) of the Land Surveyors Regulations 1998.

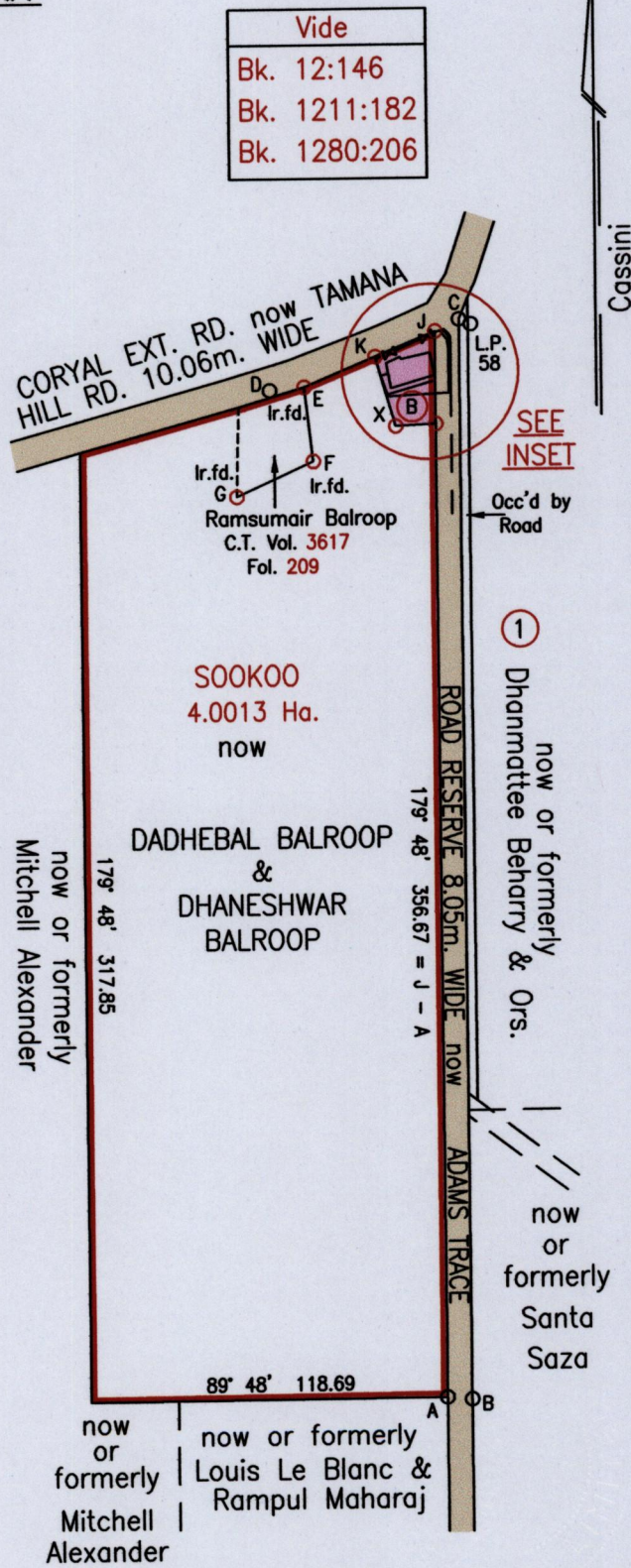
checked by *[Signature]* 6/10/2014

[Signature]

Trinidad & Tobago Land Surveyor

9th May 2014

2014



Vide
Bk. 12:146
Bk. 1211:182
Bk. 1280:206

Ramsuair Balroop
 C.T. Vol. 3617
 Fol. 209

SOOKOO
 4.0013 Ha.
 now

DADHEBAL BALROOP
 &
 DHANESHWAR
 BALROOP

now or formerly
 Mitchell
 Alexander

SEE
 INSET

① Dhanmattee Beharry & Ors.
 now or formerly

now
 or
 formerly
 Santa
 Saza

now
 or
 formerly
 Mitchell
 Alexander

now or formerly
 Louis Le Blanc &
 Rampul Maharaj

Copied from Bk. 1211 fol 182

LINE	BEARING	DIST.
A - B	95° 16'	8.22
B - C	359° 46'	361.53
C - D	249° 46'	67.18
D - E	84° 58'	11.54

LINE	BEARING	DIST.
F - G	265° 25'	28.09
E - F	173° 20'	24.94
J - C	62° 43'	8.95
E - K	67° 26'	25.56
C-LP#58	113° 17'	4.28

SCALE 1:2500

Distances are in Metres