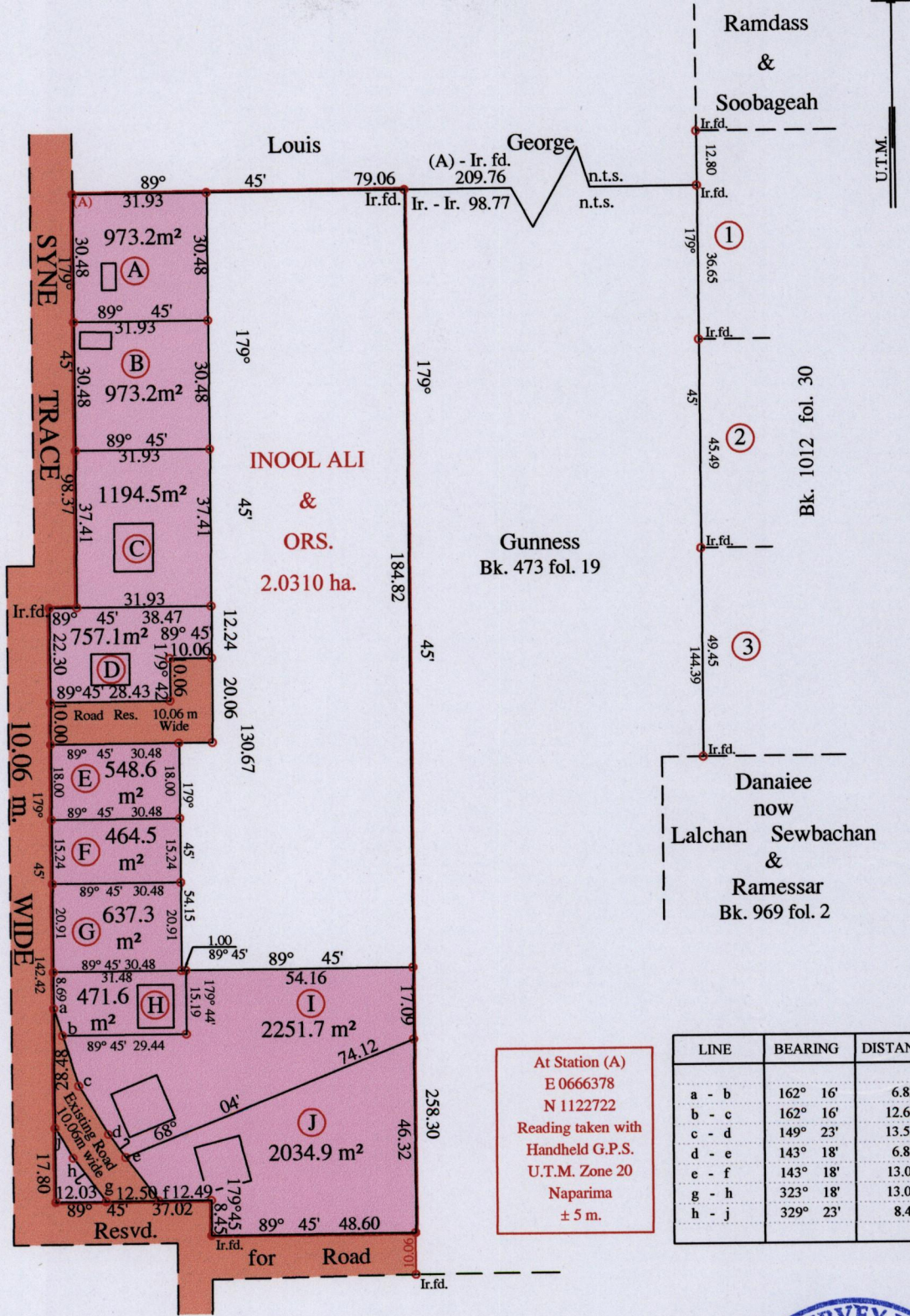


R.P.O. Vol. 142 Fol. 219
C.T. Vol. 4976 Fol. 137

Ward of Siparia
County of St. Patrick
Cadastral Sheet G.12.P 63 E
4/c

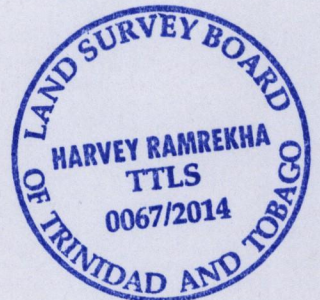


Approved *[Signature]*
Director of Surveys *[Signature]*

Vide Bk. 473 fol. 24

SCALE : 1:1500

• Denotes Iron put except stated otherwise.
Note: Bearings are U.T.M. grid based on solar observations Distances are in metres
PLAN of 10 Parcels of land colored pink in the Ward of Siparia
Containing together one point zero three zero six hectares
Surveyed by me, with due authority, in July 2001
Certified Correct in accordance with Regulation 25 (1) of the Land Surveyors' Regulations 1998,



Checked by *[Signature]*

Entered on Trinidad & Tobago Land Surveyor (T.T.L.S.) 2014