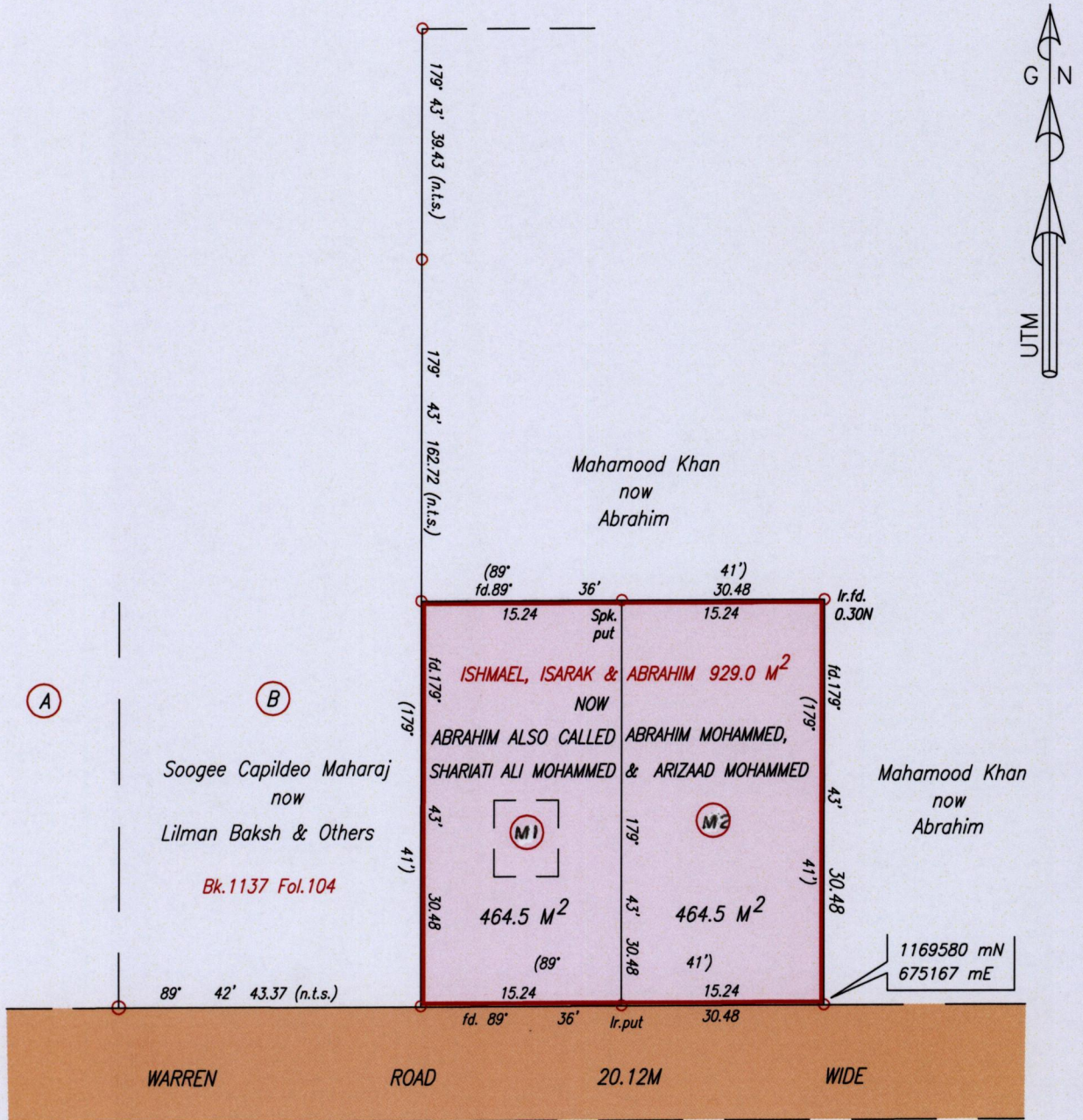


See Bk.834 Fol.32



Scale 1/500
 Distances are in metres

Approved *[Signature]*
 Director of Surveys 2/10/14

Coordinates are U.T.M. 20, Naparima (+/-3.0m)

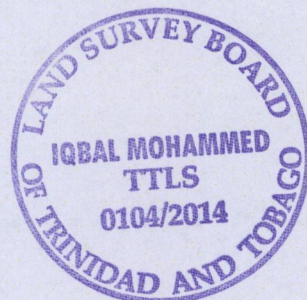
o Denotes Iron found except otherwise stated
 Bearings are UTM Grid based on Solar Observations

PLAN of 2 parcels of land coloured pink in the Ward of Cunupia
 Containing together nine hundred and twenty nine square metres
 Surveyed by me with due authority, in January, 2013

Certified Correct in accordance with Regulation 25 (1) of The Land Surveyors Regulations 1998

Entered on.....

Checked by *[Signature]* 9/9/2014



Trinidad & Tobago Land Surveyor. *[Signature]* 23/5/2014