

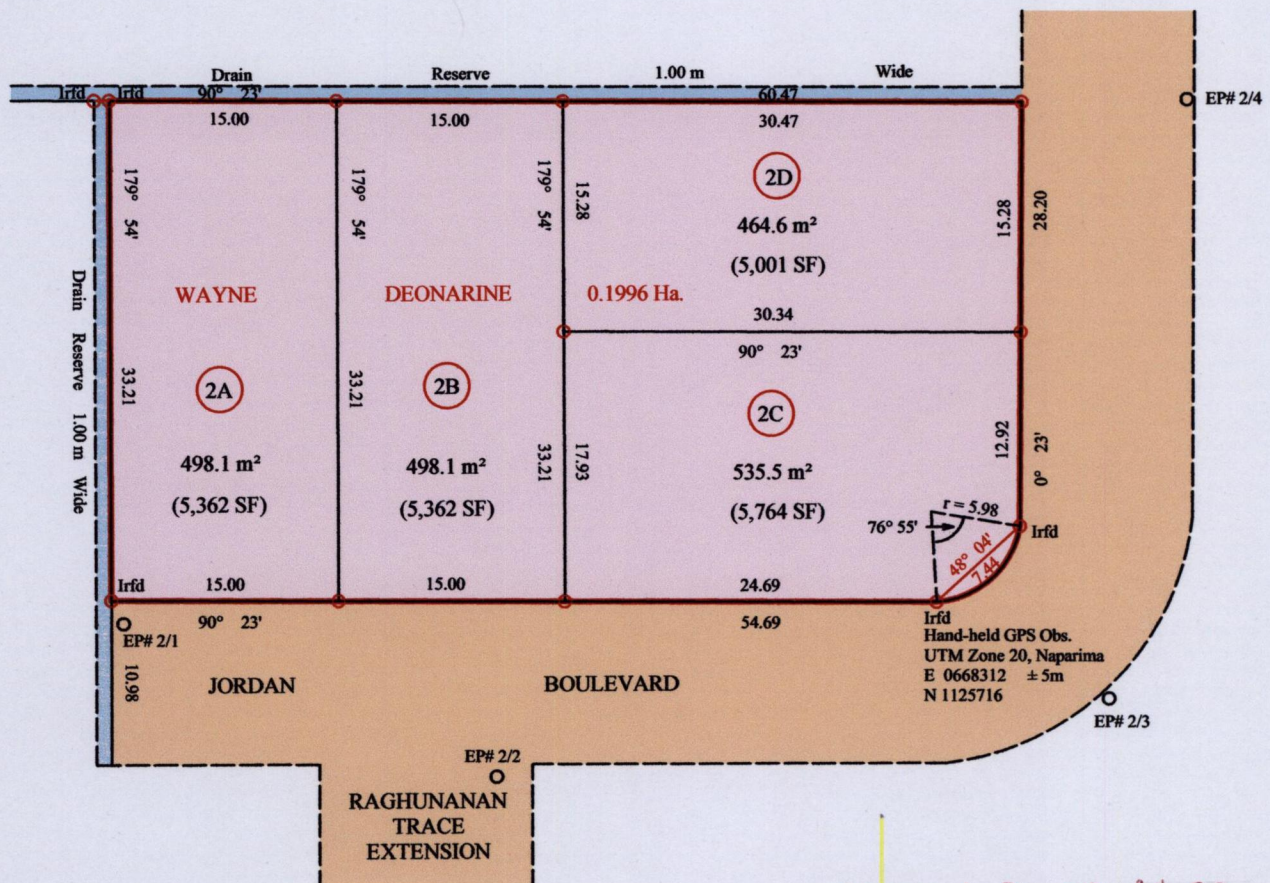
1054

95

RPO Vol 91 Fol 175
CT Vol 5131 Fol 305

Cadastral Sheet G.13.E., 63E
County of St. Patrick 2/d
Ward of Siparia
PENAL

Refs. Bk 391 Fol 22
Gen. Plan filed in CT Vol 4973 Fol 35



Original Bk 391 fol. 22

Approved

Director of Surveys

[Signature]
2/1/14

○ denotes Iron Put except otherwise stated
Bearings are Cassini Grid based on Solar Obs.
Distances are in Metres
SCALE 1/500

PLAN of four parcels of land coloured pink in the Ward of Siparia
Comprising altogether zero point one nine nine six Hectare
Surveyed by me, with due authority, in January 2013.
Certified correct in accordance with Regulation 25 (1) of the Land Surveyors' Regulations 1998.

Checked by
Entered on

Meela Mohammed
Trinidad and Tobago Land Surveyor

10th Feb 2014