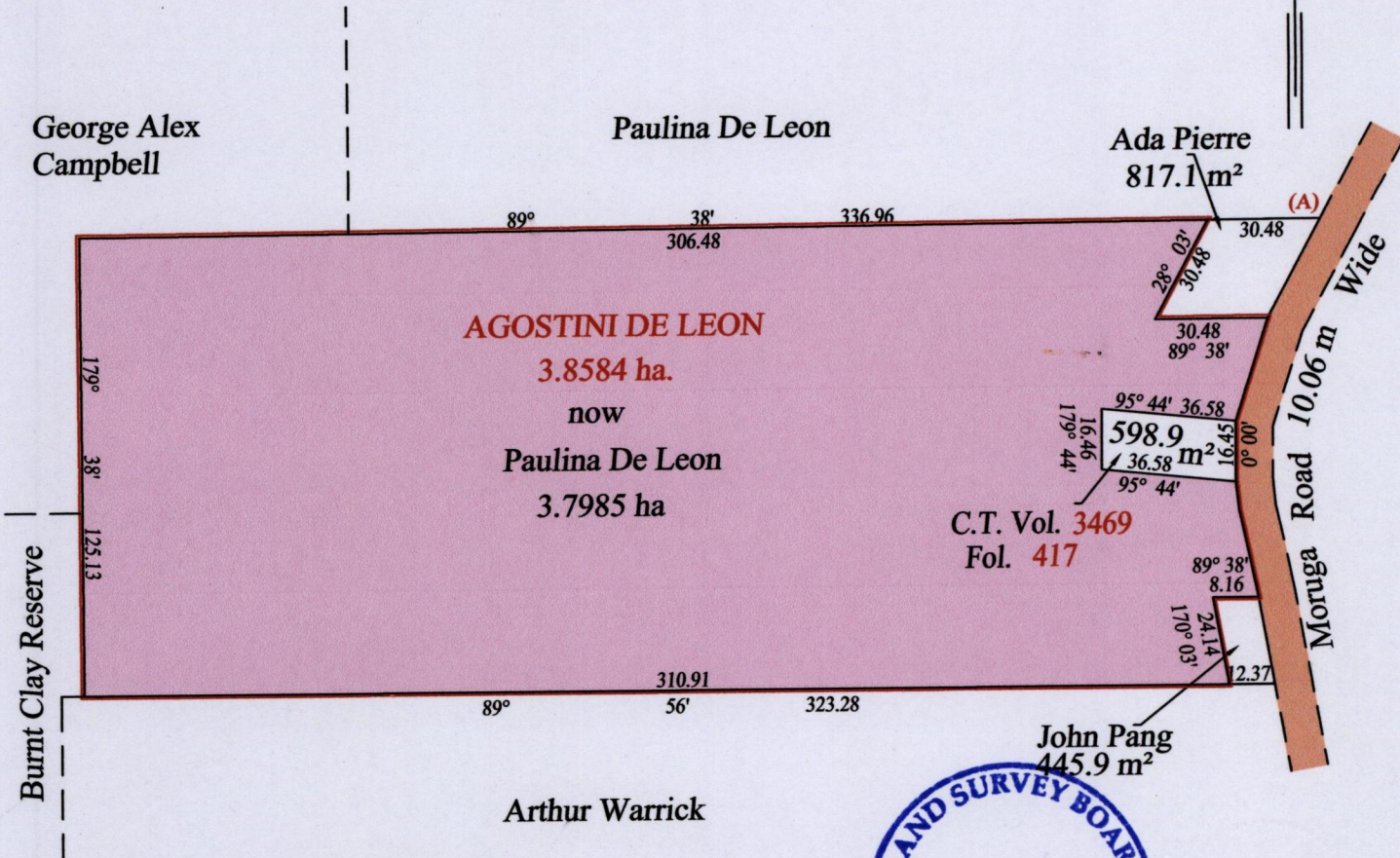


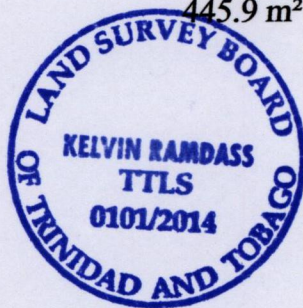
REMAINING PORTION PLAN

R.P.O. Vol. 19 Fol. 89
C.T. Vol. 1321 Fol. 363
C.T. Vol. 5648 Fol. 71

Ward of Moruga
County of Victoria
Cadastral Sheet G.20.C&G 74C.
1/c



At Station (A)
E 0686713
N 1120500
Reading taken with
Handheld G.P.S.
U.T.M. Zone 20
WGS84
± 5 m.



orig survey - Vide Bk. 317 fol. 181 for Orig. Survey

Approved *[Signature]*
Director of Surveys *[Signature]*

SCALE : 1:2000

Note: Bearings are U.T.M. grid based on solar observations Distances are in metres
Plan of three point eight five eight four hectares, originally transferred to Agostini De Leon, showing a portion coloured pink and containing three point seven nine eight five hectares being the remainder after one (1) previous transfer of another portion of the land.
In accordance with Regulation 25 (1) of the Land Surveyors' Regulations 1998, I certify that this plan is correct.

Checked by *[Signature]*

Entered on Trinidad & Tobago Land Surveyor *[Signature]* 2014