

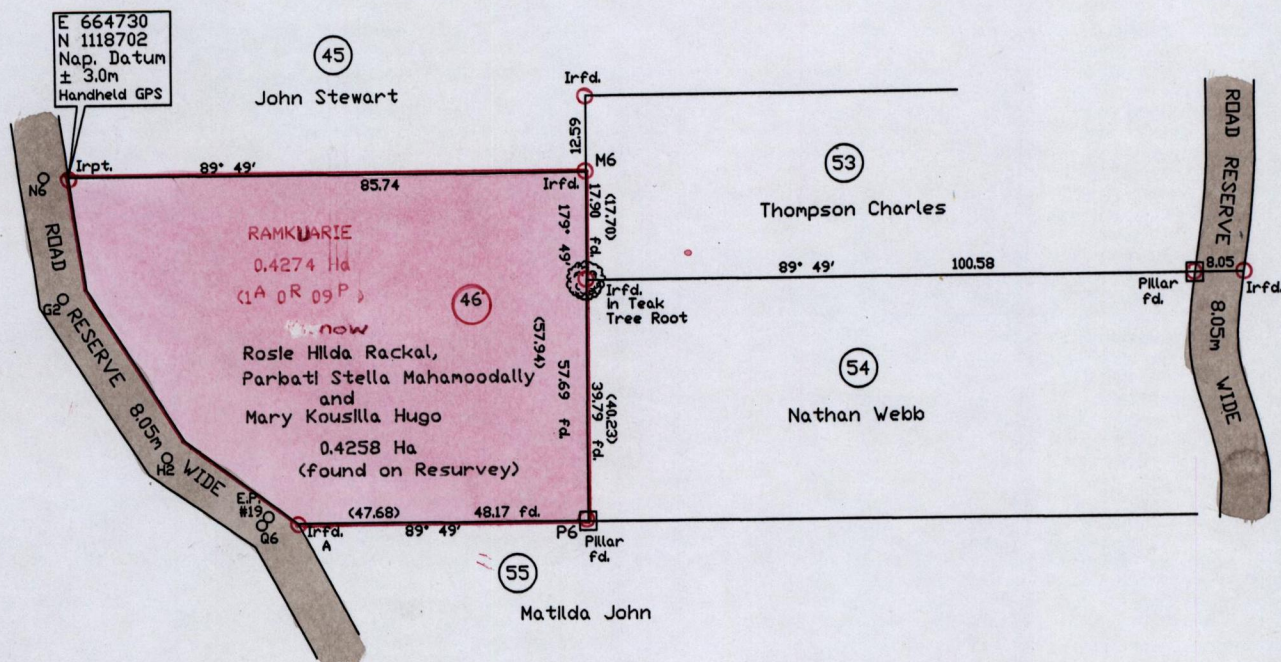
1654

90

R.P.O. Vol. 825 Fol. 409
C.T. Vol. 3750 Fol. 221

Ward of Siparia
County of St. Patrick
Cadastral Sheet G.17.G. 73B
3/b/1

Coora Settlement



Original Survey BK 774:241

Vide L&S Plan AD20
S/O 55/33

Sta	Bear.	Dist.
M6-Irft	269° 49'	85.74
N6-G2	171° 14'	20.38
G2-H2	147° 09'	31.42
H2-Q6	125° 43'	19.33
Q6-P6	89° 49'	54.39
Q6-A	89° 49'	6.22
N6-Irft	93° 14'	4.31

Approved

Director of Surveys

Irft-Irfd A = 146° 44' 68.84

SCALE 1/1250

Distances are in metres

Irfd A - E.P. #19 = 282° 47' 4.96

O - denotes road stations

Note: To obtain compass bearings add 11 minutes.

PLAN of a Parcel of land coloured pink in the Ward of Siparia

Containing zero point four two five eight hectares

Redefined by me with due authority in June 2012

Certified correct in accordance with Regulation 25(1) of the Land Surveyors' Regulations 1998

Checked by AB 13.01.2014

Entered.....

Trinidad & Tobago Land Surveyor

10th June 2013

