

1654

9

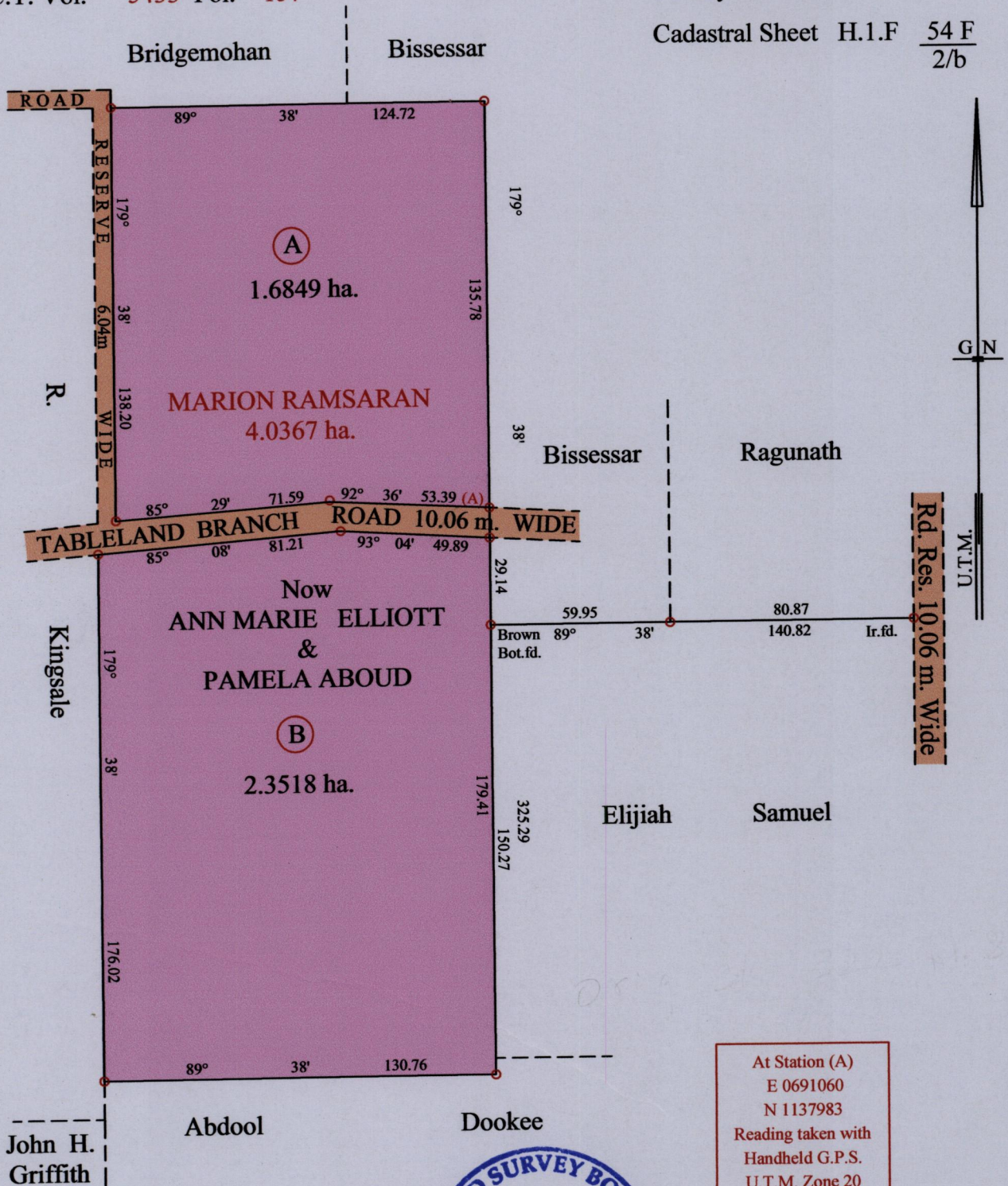
R.P.O. Vol. 18 Fol. 587

C.T. Vol. 5433 Fol. 157

Ward of Savana Grande

County of Victoria

Cadastral Sheet H.1.F 54 F  
2/b



At Station (A)  
 E 0691060  
 N 1137983  
 Reading taken with  
 Handheld G.P.S.  
 U.T.M. Zone 20  
 Naparima  
 ± 5 m.

Approved

*[Signature]*  
 Director of Surveys 16/12/13



Vide Bk. 723 fol. 299  
 Vide Bk. 322 fol. 85 - Original

SCALE : 1:2000

○ Denotes Iron put except stated otherwise.

Note: Bearings are U.T.M. grid based on solar observations Distances are in metres

PLAN of 2 Parcels of land coloured pink in the Ward of Savana Grande

Containing together four point zero three six seven hectares

Surveyed by me, with due authority, in June 2008

Certified Correct in accordance with Regulation 25 (1) of the Land Surveyors' Regulations 1998,

Checked by .....

Entered on ..... Trinidad & Tobago Land Surveyor (TTLS) ..... 2013