

R.P.O. Vol. 140  
 C.T. Vol. 4933  
 U.R.P.N. . . . .

Vide Plan DI 1  
 James Quildon  
 then  
 J. Denis Joseph

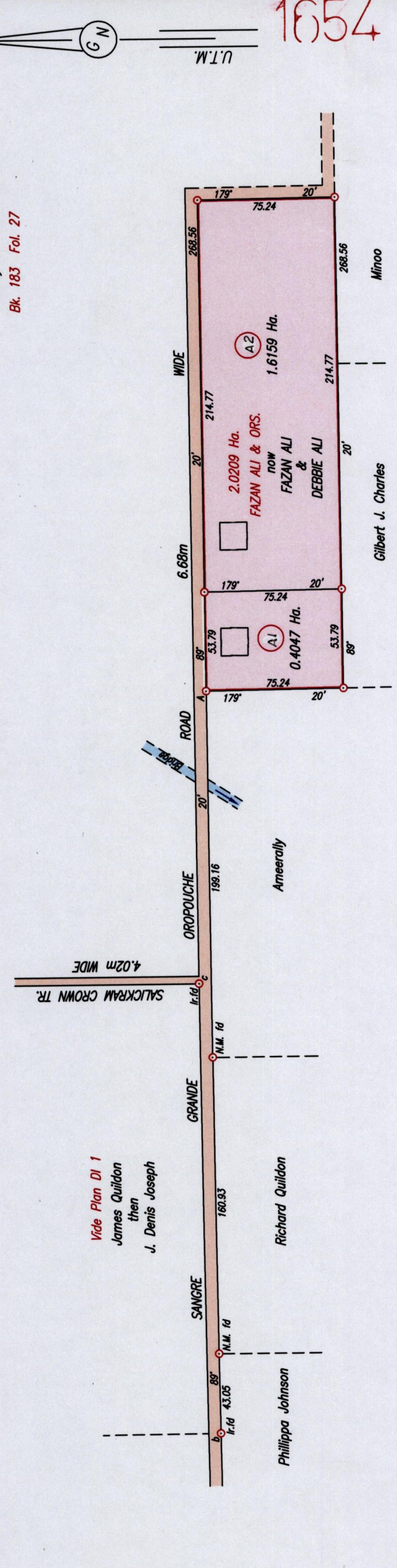
Richard Quildon  
 Philippa Johnson

GRANDE  
 SANGRE

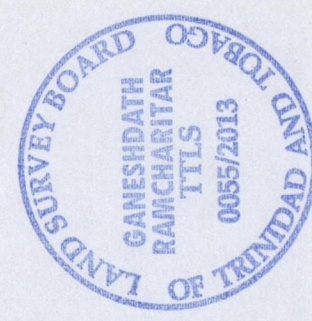
OROPOUCHE  
 ROAD

WIDE  
 Minoo

26A  
 Cadastral Sheet C.23.J. 4/d  
 Ward of Manzanilla  
 County of St. Andrew  
 Bk. 183 Fol. 27



1654



Original Survey Bk 183:27

Legend	Sta.	Bearing	Dist.
	b - c	87° 46'	244.21

SCALE 1/2500  
 Distances are in metres

Point A  
 Co-ordinates obtained by Hand Held G.P.S. (WGS84 U.T.M. Zone 20 )  
 Accuracy ± 5m  
 E 712813m  
 N 1173182m

Approved  
 . . . . .  
 Director of Surveys

Note: To obtain Cassini bearing + 18 minutes  
 o Denotes iron put except otherwise stated  
 Bearings are U.T.M. Grid based on Solar Observations  
 Plan of 2 Parcels of land coloured pink in the Ward of Manzanilla  
 Containing together two point zero two zero six hectares  
 Surveyed by me, with due authority, on 12th November 2008  
 Certified Correct in accordance with Regulation 25 (1) of the Land Surveyors' Regulations 1998

*Ganesh Dath Ramcharitar*

Entered on . . . . .  
 Checked by . . . . .  
 . . . . . 29/11 . . . . . 2013  
 Trinidad & Tobago Land Surveyor

89