

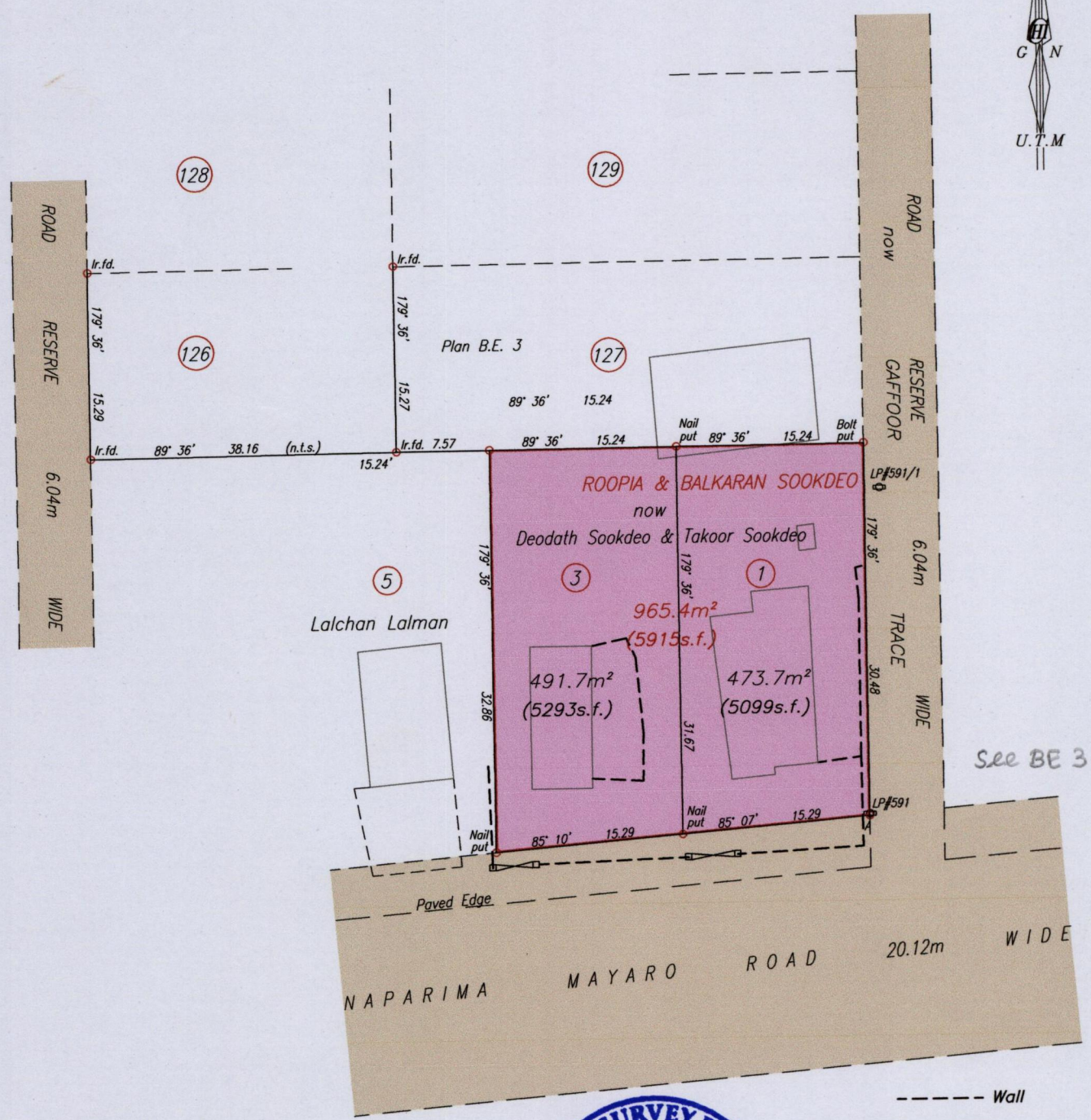
1654

87

R.P.O. Vol. 3 Fol. 471  
C.T. Vol. 953 Fol. 395

Cadastral Sheet H.1.1. 54F  
Ward of Ortoire 2/c  
County of Victoria

LP#591 Naparima Mayaro Rd.  
Tableland



Station	Bearing	Distance	Station
A	90° 17'	16.02	LP#591
A Iron put N. 1136 765 Hand Held GPS E. 0689 932 WGS84 Zone20			

Approved *[Signature]*  
Director of Surveys 6/3/14

SCALE 1/500  
Distances are in metres

Original Survey BK 327:161

o Denotes Iron Put unless otherwise stated  
Bearings are UTM Grid based on Solar Observations  
PLAN of 2 Parcels of land coloured pink in the Ward of Ortoire  
Containing together nine six five point four square metres  
Surveyed by me, with due authority, in January 2014  
Certified Correct In accordance with Regulation 25 (1) of the Land Surveyors' Regulations 1998,

Checked by .....  
Entered on.....

*[Signature]*  
Trinidad & Tobago Land Surveyor 24<sup>th</sup> February 2014