

1654

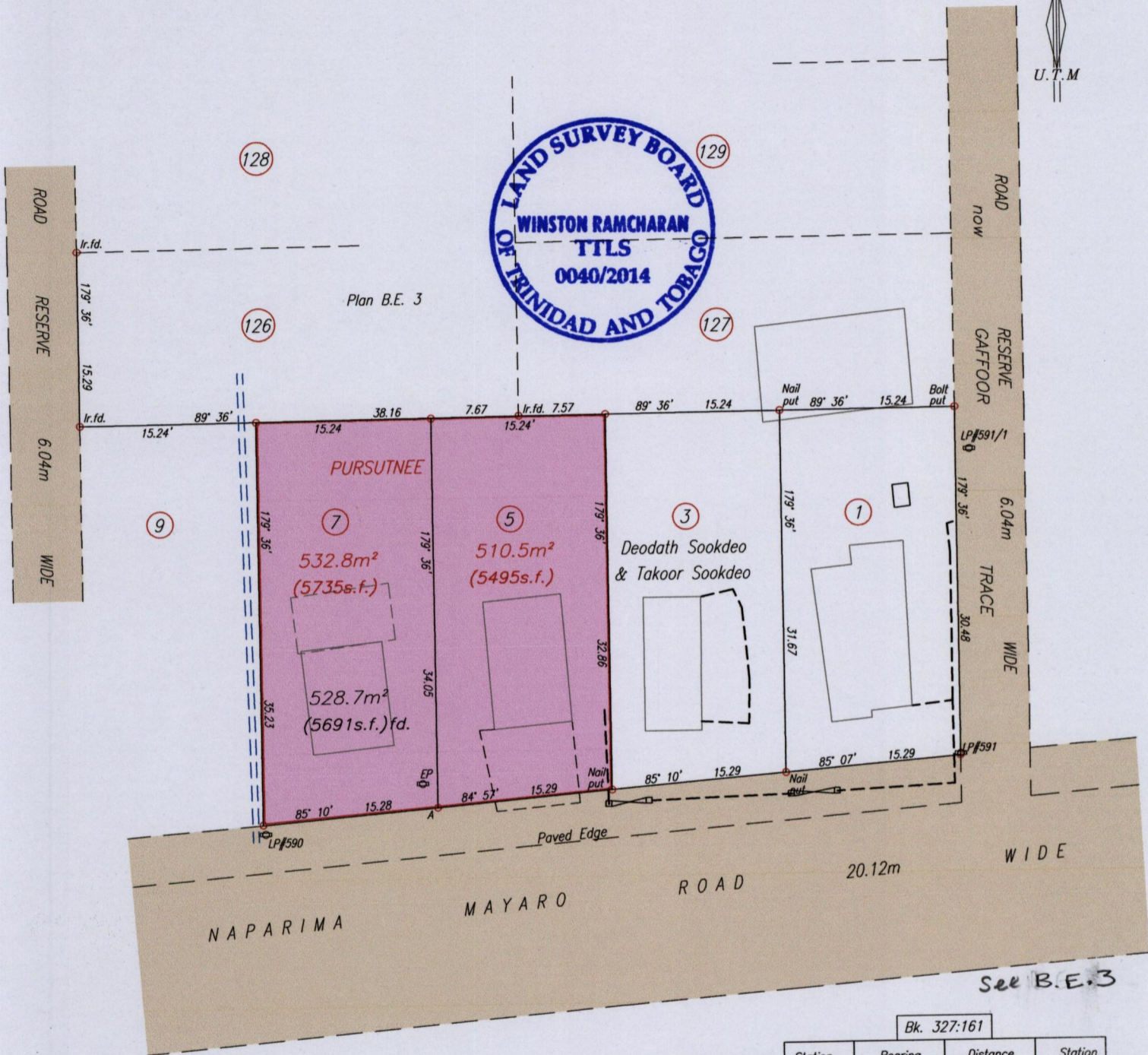
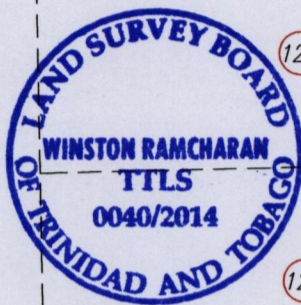
88

R.P.O. Vol. 83 Fol. 37
C.T. Vol. Fol.

Cadastral Sheet H.1.1. 54F
Ward of Ortoire 2/c
County of Victoria

VESTING ORDER

LP#590 Naparima Mayaro Rd.
Tableland



Approved

Director of Surveys

6/1/14

Bk. 327:161

Station	Bearing	Distance	Station
A	256° 14'	14.32	LP#590
A Iron put N. 1136 756 Hand Held GPS E. 0689 900 WGS84 Zone20			

SCALE 1/500

Distances are in metres

o Denotes Iron Put unless otherwise stated

Bearings are UTM Grid based on Solar Observations

PLAN of 2 Parcels of land coloured pink in the Ward of Ortoire

Containing together one zero four three point three square metres

Surveyed by me, with due authority, in January 2014

Certified Correct In accordance with Regulation 25 (1) of the Land Surveyors' Regulations 1998,

Checked by

Winston Ramcharan

Entered on.....

Trinidad & Tobago Land Surveyor 24th February 2014

Orig Survey Bk 326:68