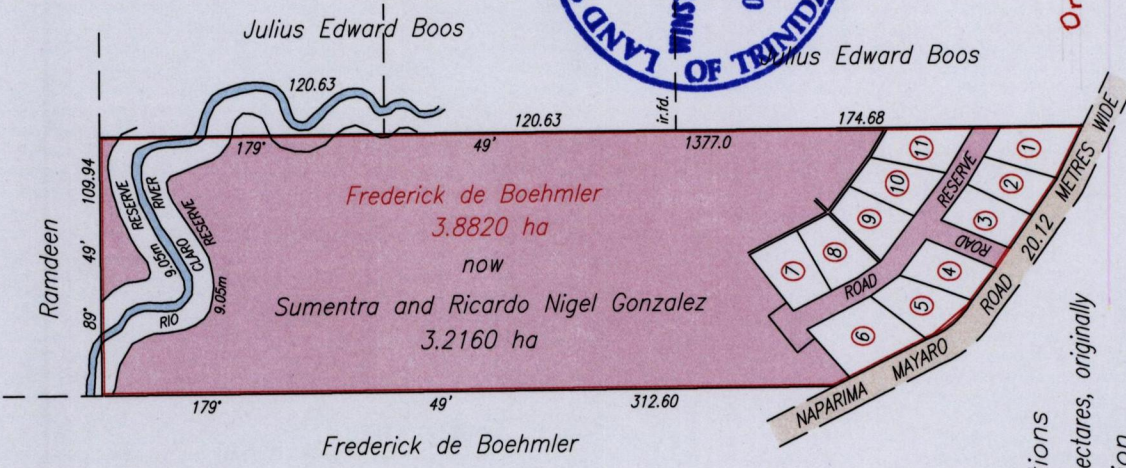


REMAINING PORTION

INSET



Bk 1141 : 34			
Lot #	Area m ²	CT vol	Fol
1	662.9	2875	307
2	509.3	4931	339
3	550.0	2878	309
4	565.6	3564	7
5	607.4	4116	509
6	915.0	3934	127
7	618.4	4038	301
8	583.7	4931	319
9	561.8	3145	477
10	572.0	3711	95
11	552.2	4931	329

Not To Scale
Distances are in metres

Bearings are Cassini Grid based on Solar Observations
This is a true copy of a diagram of three point eight two zero hectares, originally
Granted to Frederick De Boehmler, shewing a portion
coloured pink and containing three point two one six zero hectares being
the remainder after eleven (11) previous transfer of another portion of land.
In accordance with Regulation 25 (1) of the Lands Surveyors' Regulations 1998,
I certify that this plan is correct.

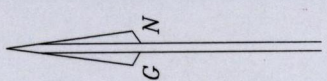
Checked by.....
Entered On.....



Original Survey Bk. 554:134

Winston Ramcharan
Director of Surveys 6/3/14

Orig 8k 554:134



1654

35

SCALE 1/1200
Distances are in me

