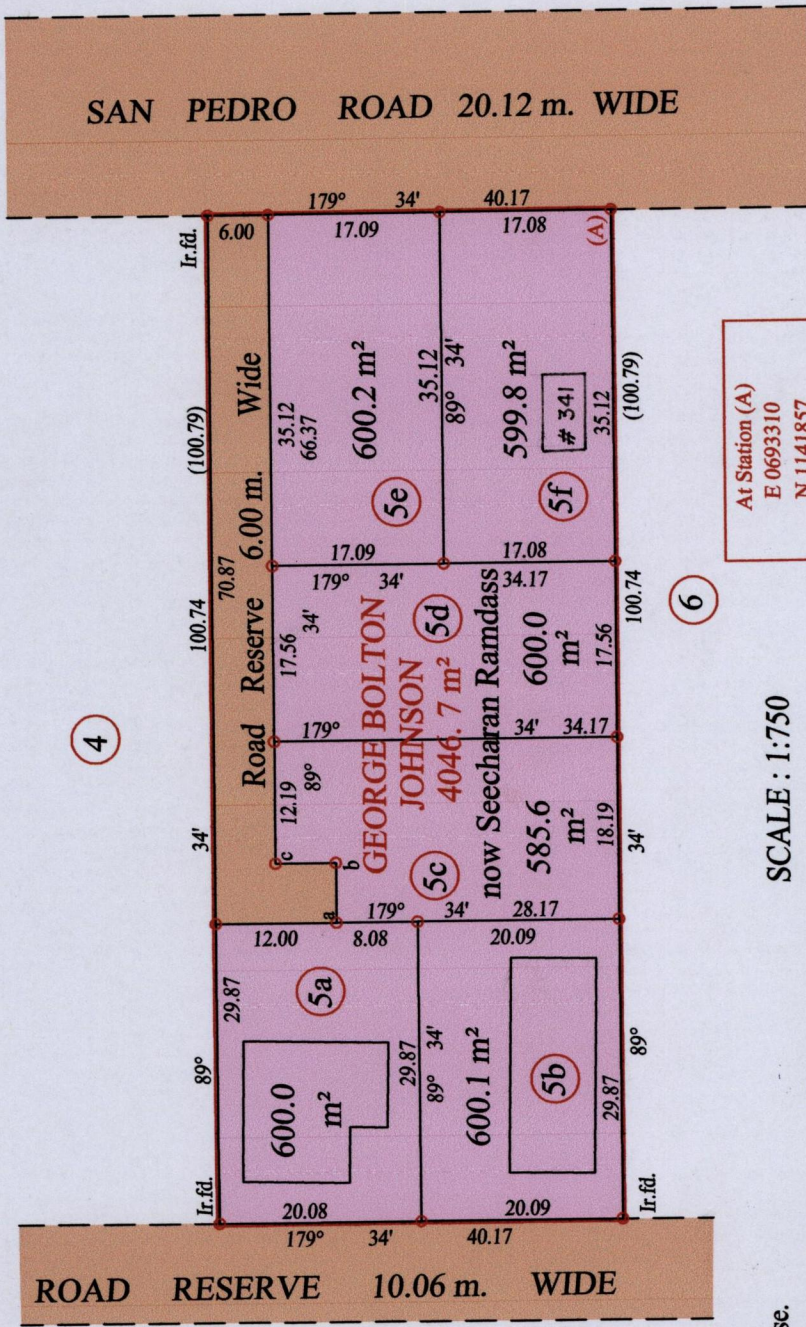
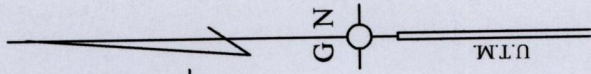


R.P.O. Vol. 202 Fol. 661
C.T. Vol. 1776 Fol. 153
Process ID # 742716

Ward of Charuma
County of Nariva
Cadastral Sheet D 25 K 55 A
1/d



Vide Bk. 944 fol. 94 for Original Survey

a - b	89° 34'	6.00
b - c	359° 34'	6.00

At Station (A)
E 0693310
N 1141857
Reading taken with
Handheld G.P.S.
U.T.M. Zone 20
Naparima
± 5 m.

Approved
Director of Surveys

○ Denotes Iron put except stated otherwise.

Note: Bearings are U.T.M. grid based on solar observations Distances are in metres
PLAN of 6 parcels of land coloured pink in the Ward of Charuma
Containing together three thousand five hundred and eighty five point seven square metres
Surveyed by me, with due authority, in March 2006
Certified correct, in accordance with Regulation 25 (1) of the Land Surveyors' Regulations 1998,

SCALE : 1:750

Checked by *[Signature]*
17/12/13

Entered on Trinidad & Tobago Land Surveyor 2013