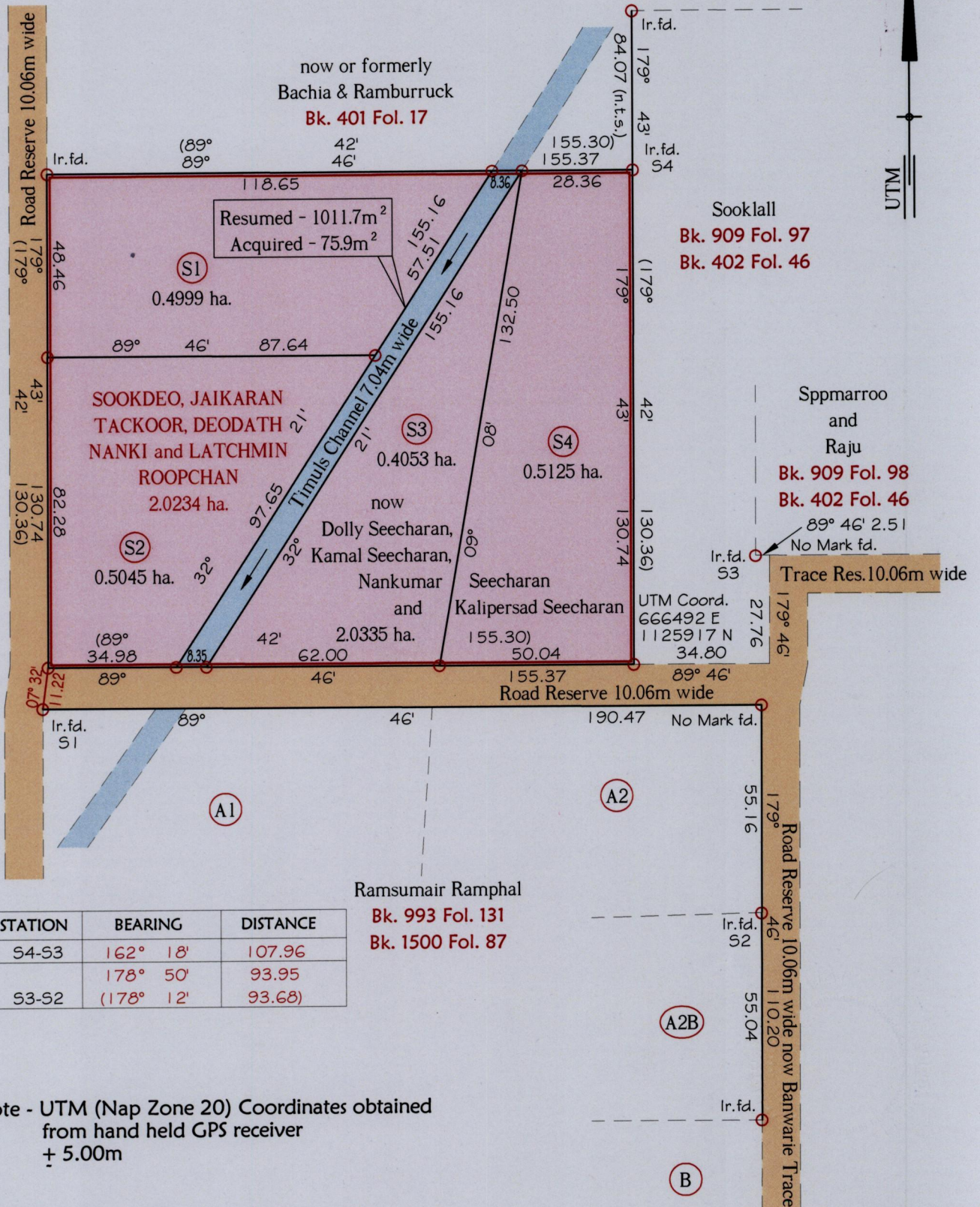


1654

7

R.P.O Vol. 176 Fol. 538
 C.T. Vol. 3580 Fol. 467
 Address - Lot S1-S4 Road Res.,
 Penal.

Ward of Siparia
 County of St. Patrick
 Cadastral Sheet G.12.H., $\frac{63E}{1/d}$



Note - UTM (Nap Zone 20) Coordinates obtained from hand held GPS receiver $\pm 5.00m$

Approved *[Signature]*
 Director of Surveys *16/12/13*

Original Survey
 Ref.:- Bk. 403 Fol. 33
 S.O. No. 619/1906
 SCALE 1:1500

○ Denotes Iron put except stated otherwise.
 Note: Bearings are UTM grid based on solar observations Distances are in metres.
 Plan of 4 Parcels of land coloured pink in the Ward of Siparia.
 Containing together one point nine two two two hectares.
 Surveyed by me, with due authority, in April 2012
 Certified correct in accordance with Regulation 25(1) of the Land Surveyors' Regulations 1998,

Checked by
 Entered on Trinidad & Tobago Land Surveyor *6/2/2013*

