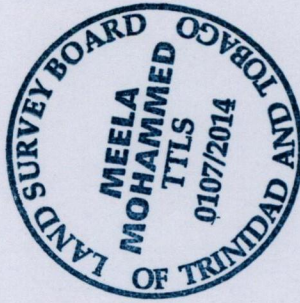
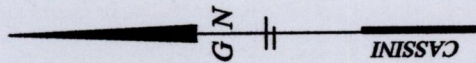


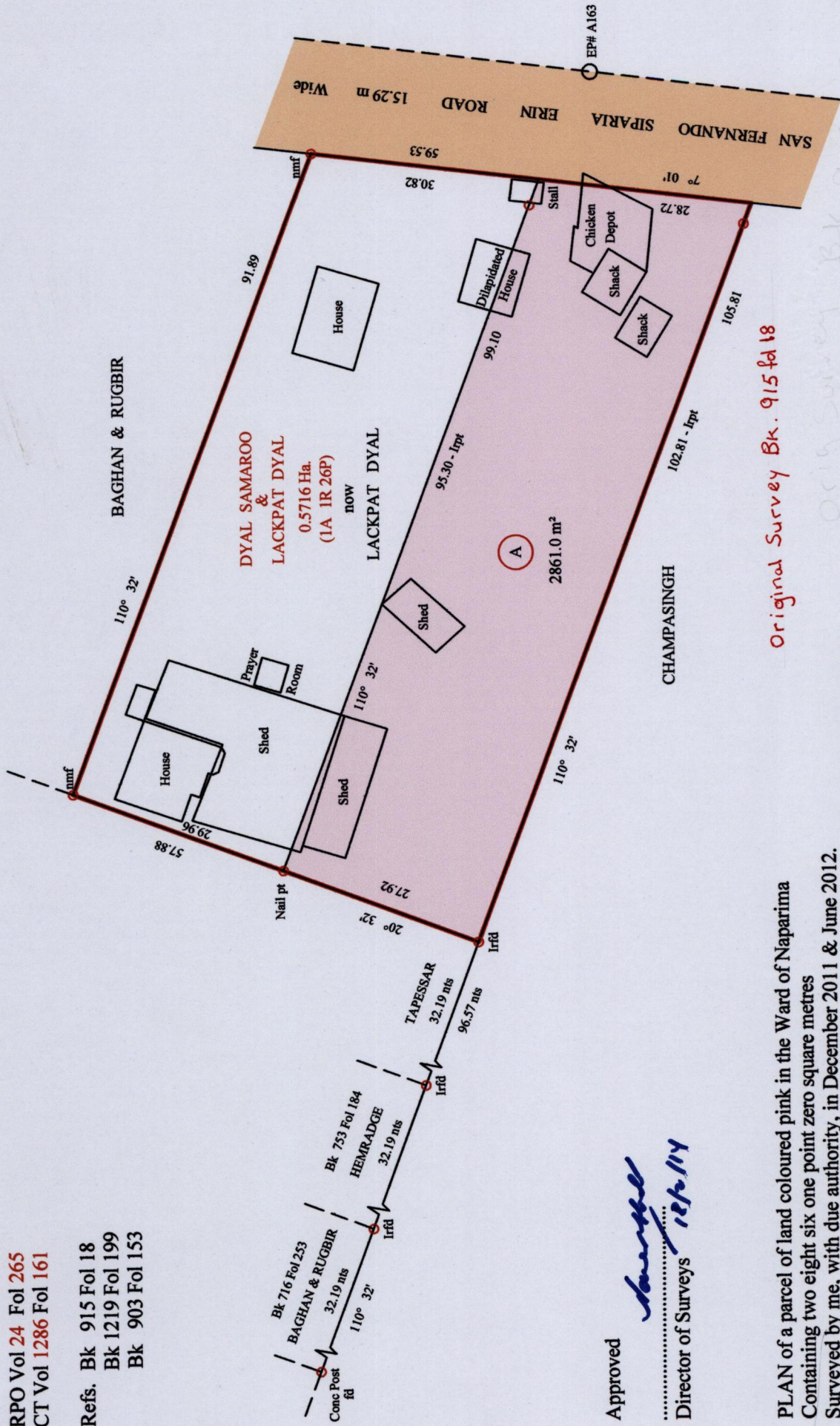
Cadastral Sheet G.8.N., 63C  
 County of Victoria  
 Ward of Naparima  
DEBE

1654

68



○ denotes Iron Put except otherwise stated  
 Bearings are Cassini Grid based on Solar Obs.  
 Distances are in Metres  
**SCALE 1/750**



Original Survey Bk. 915 fol 18

Original Survey Bk. 915:18

RPO Vol 24 Fol 265  
 CT Vol 1286 Fol 161  
 Refs. Bk 915 Fol 18  
 Bk 1219 Fol 199  
 Bk 903 Fol 153

Approved  
 .....  
 Director of Surveys 12/6/14

PLAN of a parcel of land coloured pink in the Ward of Naparima  
 Containing two eight six one point zero square metres  
 Surveyed by me, with due authority, in December 2011 & June 2012.  
 Certified correct in accordance with Regulation 25 (1) of the Land Surveyors' Regulations 1998.

Checked by .....  
 Entered on .....  
 Meela Mohammed  
 Trinidad and Tobago Land Surveyor  
 3rd. Feb. 2014

1654/68