

1654³

63

R.P.O. Vol. 10 Fol. 411

C.T. Vol. 2121 Fol. 425

Ref.: Plan P.G. 98

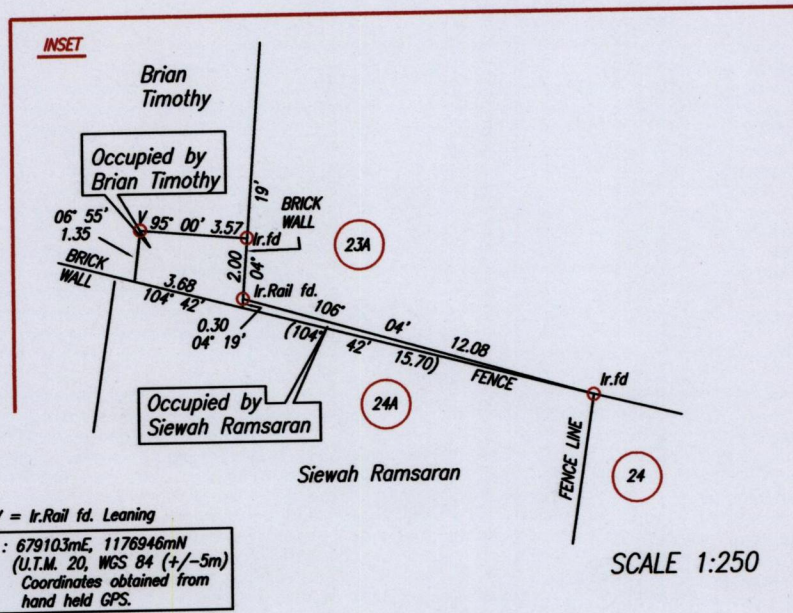
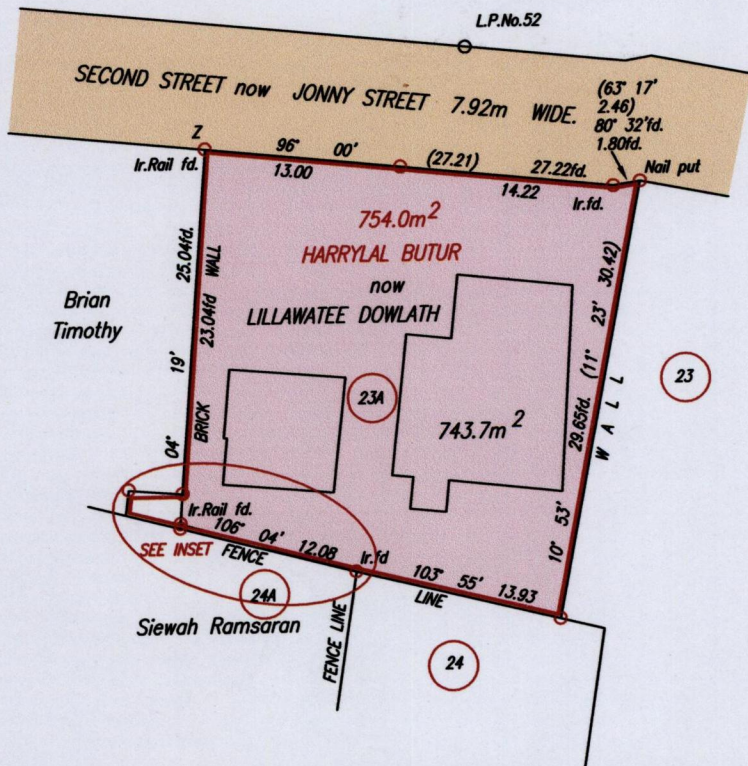
Ref.: Bk. 1427 Fol. 144

Cadastral Sheet B.18.0. & P. 24A
2/b

Ward of Tacarigua

County of St. George

Dinsley Village.



V = Ir.Rail fd. Leaning
 Z : 679103mE, 1176946mN
 (U.T.M. 20, WGS 84 (+/-5m))
 Coordinates obtained from
 hand held GPS.

Orig Survey Plan P.G 98



Approved

Director of Surveys 5/2/14

SCALE 1:500

Distances are in Metres

○ Denotes Iron put except otherwise stated.

Bearings are Cassini Grid based on Solar Observations.

PLAN of a Parcel of land coloured pink in the Ward of Tacarigua
Containing seven hundred and forty three point seven square metres.

Surveyed by me, with due authority, in March 2007

Certified Correct in accordance with Regulation 25(1) of the Land Surveyors' Regulations 1998,

Checked by

Winston Ramcharan

Entered

Trinidad & Tobago Land Surveyor 27th January 2014