

1654

REMAINING PORTION PLAN

600

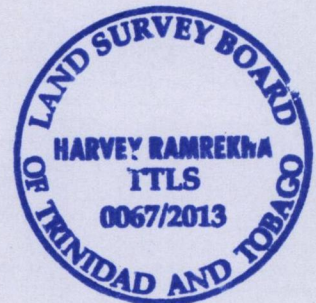
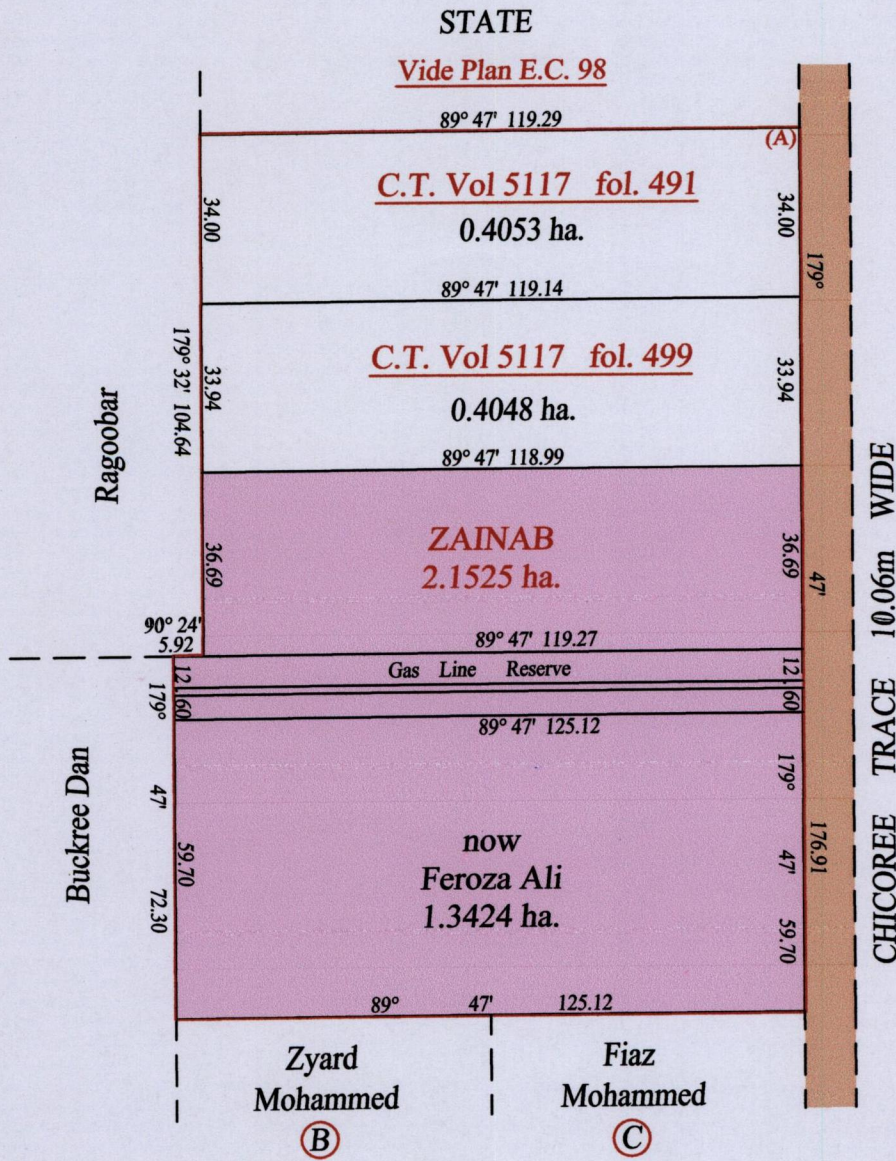
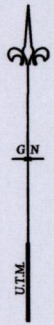
R.P.O. Vol. 46 Fol. 163

Ward of Siparia

C.T. Vol. 3264 Fol. 33

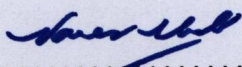
County of St. Patrick

Cadastral Sheet G.12.G $\frac{63D}{2/d}$ & $\frac{63E}{1/c}$



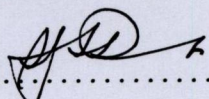
Original Survey
Vide Bk. 1163 fol. 143 for Orig.

At Station (A)
E 0663820
N 1126085
Reading taken with
Handheld G.P.S.
U.T.M. Zone 20
Naparima
± 10 m.

Approved 
Director of Surveys 29/1/14

SCALE : 1:1500

Note: Bearings are U.T.M. grid based on solar observations Distances are in metres
 Plan of two point one five two five hectares
 originally transferred to Zainab, showing a portion
 coloured pink and containing one point three four two four hectares
 being the remainder after two (2) previous transfers of another portion of the land.
 In accordance with Regulation 25(1) of the Land Surveyors Regulations 1998
 I certify that this plan represents the remaining portion

Checked by 

Entered on Trinidad & Tobago Land Surveyor 18.12.2013