

U.P.R.N.....

R.P.O Vol. 263 Fol. 53

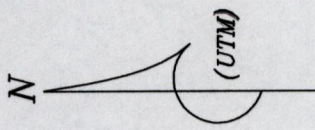
C.T. Vol. 1835 Fol. 463

Address - Haggard Trace, Penal.

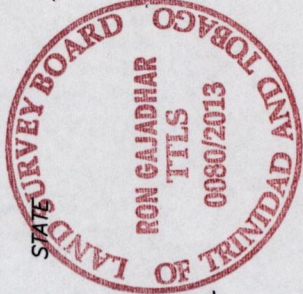
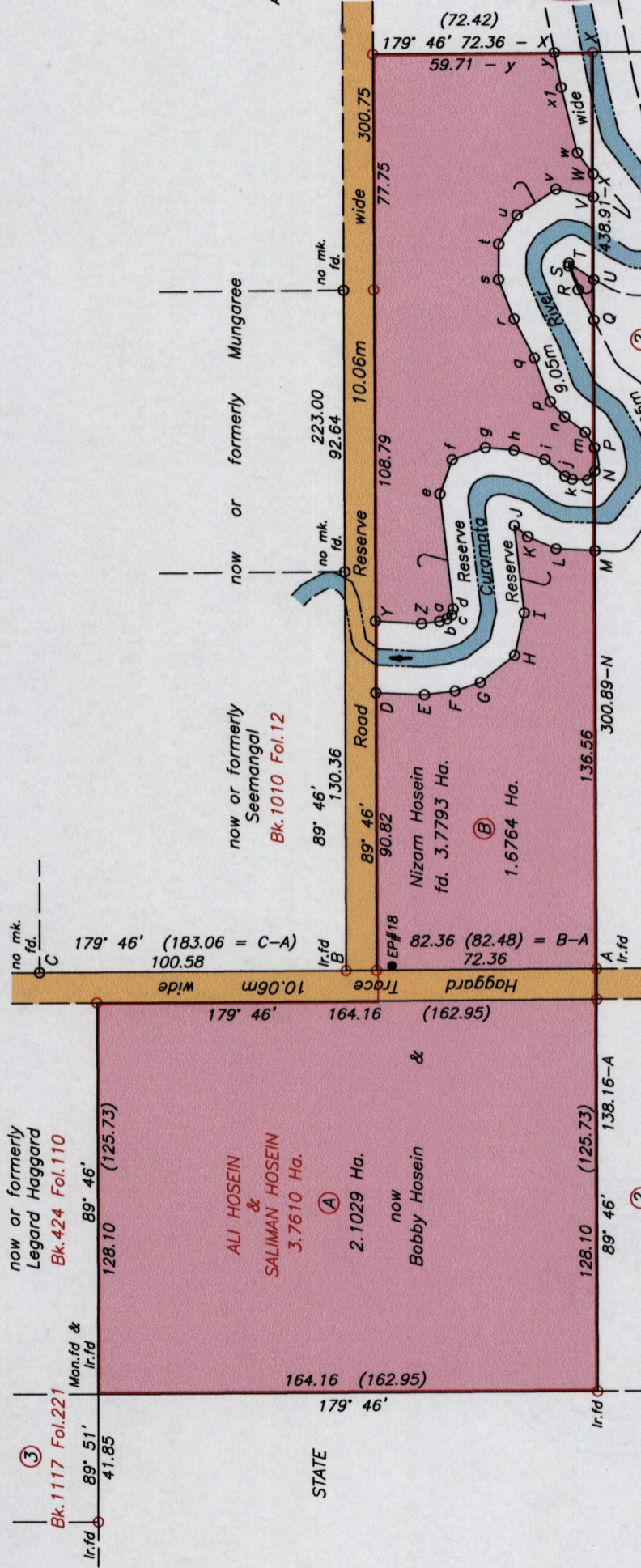
Ward of Siparia

County of St. Patrick

Cadastral Sheet G.19.F. 74A
1/d



A = 676405 E (U.T.M)
= 1119450 N



Note - UTM (Nap-Zone 20) Coordinates obtained from hand held GPS receiver ± 5.00m

- Denotes no mark put
 - Denotes Iron put except stated otherwise
- Note: Bearings are U.T.M. grid based on solar observations

Plan of 2 Parcels of land coloured pink in the Ward of Siparia. Containing together three point seven seven nine three hectares. Surveyed by me, with due authority, in June 2012. Certified correct in accordance with Regulation 25(1) of the Land Surveyors' Regulations 1998.

Checked by.....
Entered on.....

Trinidad & Tobago Land Surveyor..... 25.01.2013

Approved.....
Director of Surveys

Original - Bk.425 Fol.106
Bk.1012 Fol.39

SCALE 1:2000

Distances are in metres

Legend

D - E	182° 30'	16.02	Q - U	89° 46'	13.35	j - k	203° 26'	2.60
E - F	173° 17'	10.14	U - V	89° 46'	27.45	k - l	182° 55'	5.12
F - G	161° 47'	8.82	V - W	89° 46'	7.60	l - m	127° 50'	3.68
G - H	142° 07'	14.28	W - X	89° 46'	39.97	m - n	59° 00'	5.94
H - I	102° 47'	14.21	D - Y	89° 46'	23.39	n - o	36° 33'	8.47
I - J	83° 28'	28.76	O - Z	183° 20'	15.23	o - p	46° 36'	6.86
J - K	220° 05'	5.77	Z - a	173° 17'	5.99	p - q	70° 11'	15.40
K - L	203° 26'	10.17	a - b	161° 47'	2.48	q - r	62° 45'	14.52
L - M	182° 55'	12.85	b - c	142° 07'	2.02	r - s	68° 32'	14.00
M - N	89° 46'	7.68	c - d	102° 47'	2.02	s - t	90° 17'	11.81
N - P	89° 46'	41.97	d - e	83° 28'	38.01	t - u	122° 06'	11.31
P - Q	62° 45'	11.35	e - f	109° 36'	11.95	u - v	146° 30'	15.35
Q - R	68° 32'	8.39	f - g	160° 12'	11.64	v - w	192° 04'	12.64
R - S	90° 17'	1.02	g - h	185° 37'	9.51	w - x	53° 05'	8.76
S - T	214° 09'	9.92	h - i	196° 54'	10.59	x - y	78° 06'	22.10
T - U			i - j	220° 05'	8.64	x1 - y		11.69

L.S.