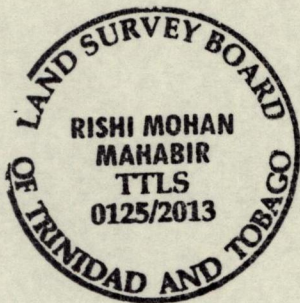
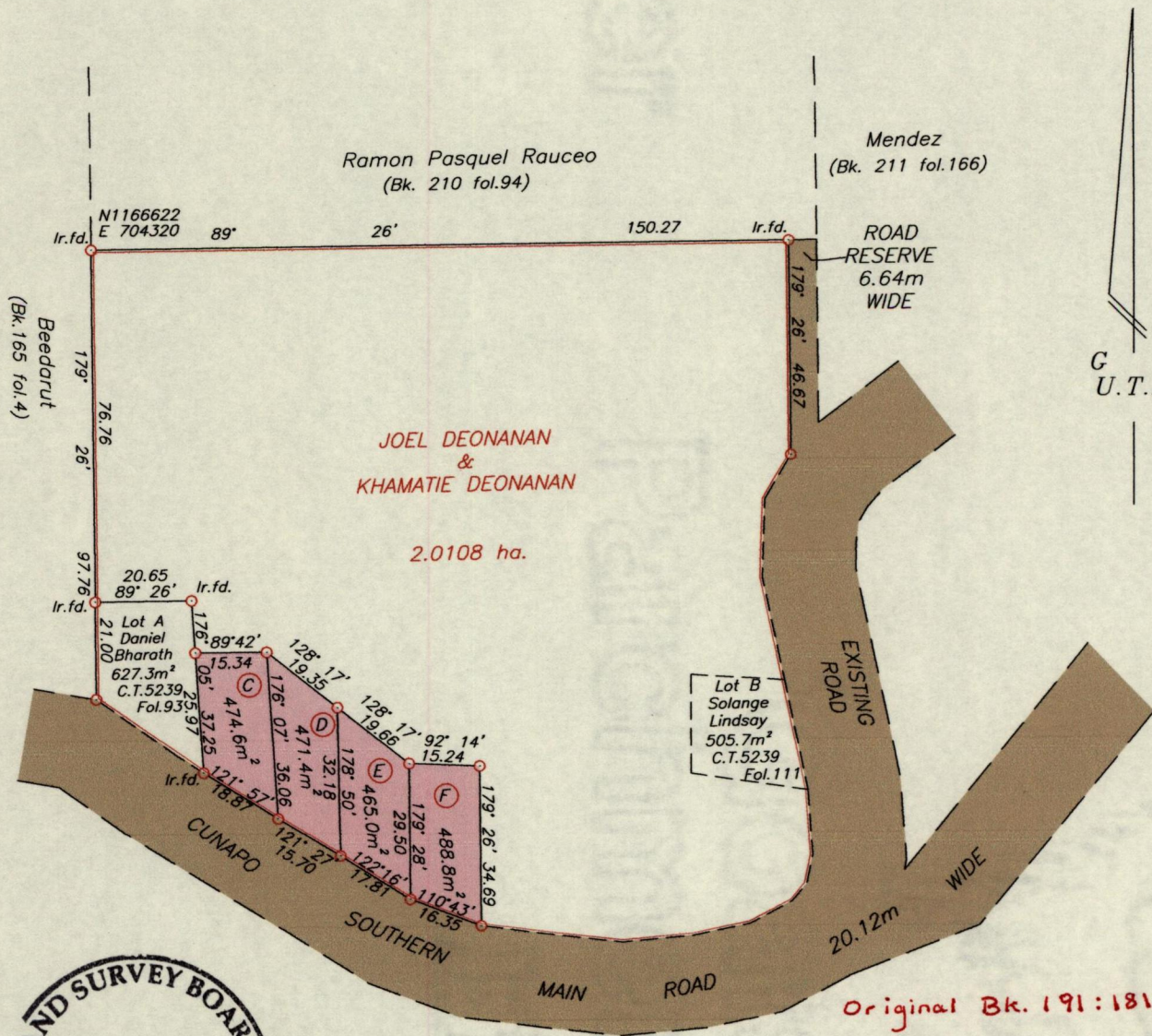


R.P.O. Vol. 200 fol. 209
C.T. Vol. 3060 fol. 191

Cadastral Sheet E.2.1 $\frac{35C}{1/b}$
Ward of Turure
County of St. Andrew



Original Bk. 191:181

Approved *[Signature]*
Director of Surveys
17/1/14

○ Denotes Ir.pt. unless otherwise stated.
Bearings are U.T.M. grid based on solar observations
Co-ordinates are U.T.M. zone 20N Naparima Datum +/-5m
scaled from a 1/10000 ward sheet

Vide plan Bk.191 fol.181 (Parent Parcel)
SCALE 1/1500
Distances are in metres

PLAN of 4 Parcels of land coloured pink in the Ward of Turure
Containing together one eight nine nine point eight square metres
Surveyed by me, with due authority, in July 2013
Certified Correct in accordance with Regulation 25 (1) of the
Land Surveyors Regulations 1998

Checked by..... *[Signature]*
Entered..... Trinidad & Tobago Land Surveyor *[Signature]* 26th November 2013