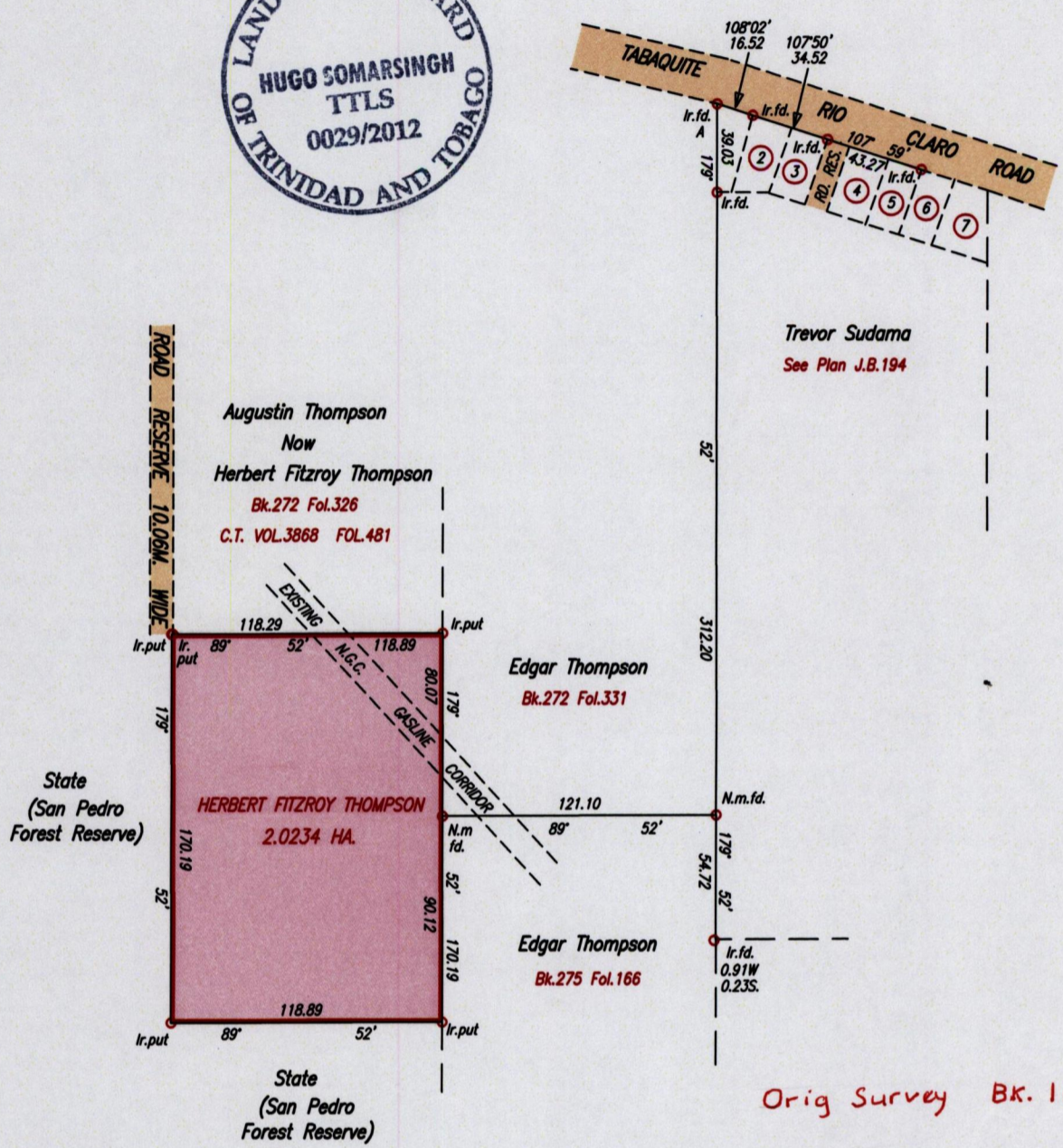
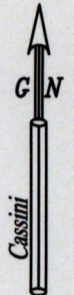
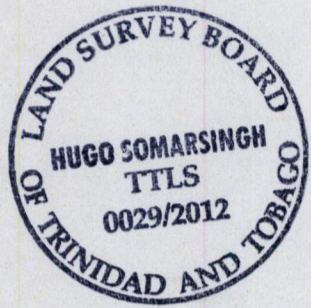


16-5 1654

49

R.P.O. Vol. 224 Fol. 457  
C.T. Vol. 3857 Fol. 341  
Bk.275 Fol.161 *orig*

Ward of Charuma  
County of Nariva  
Cadastral Sheet D.25.K. 55A  
1/d  
**POOL VILLAGE**



Orig Survey Bk. 161

SCALE 1/3000  
Distances are in Metres.

Iron A  
692876 mE, 1142485 mN  
U.T.M. 20, Nap. (+/- 3.0m.)  
G.P.S. (Handheld)

Approved .....  
Director of Surveys *6/11/14*

Bearings are Cassini Grid based on solar Observations

PLAN of a Parcel of land coloured pink in the Ward of Charuma

Containing two point zero two three four hectares

Surveyed by me, with due authority, in November, 2012.

In accordance with Regulation 25 (1) of The Land Surveyors' Regulations 1998,

I certify that this plan is correct.

Checked by *mm 18/6/2013*

.....  
*H. Somarsingh*

Entered on ..... Trinidad & Tobago Land Surveyor ..... *27th Nov 2012* ..... 2012