

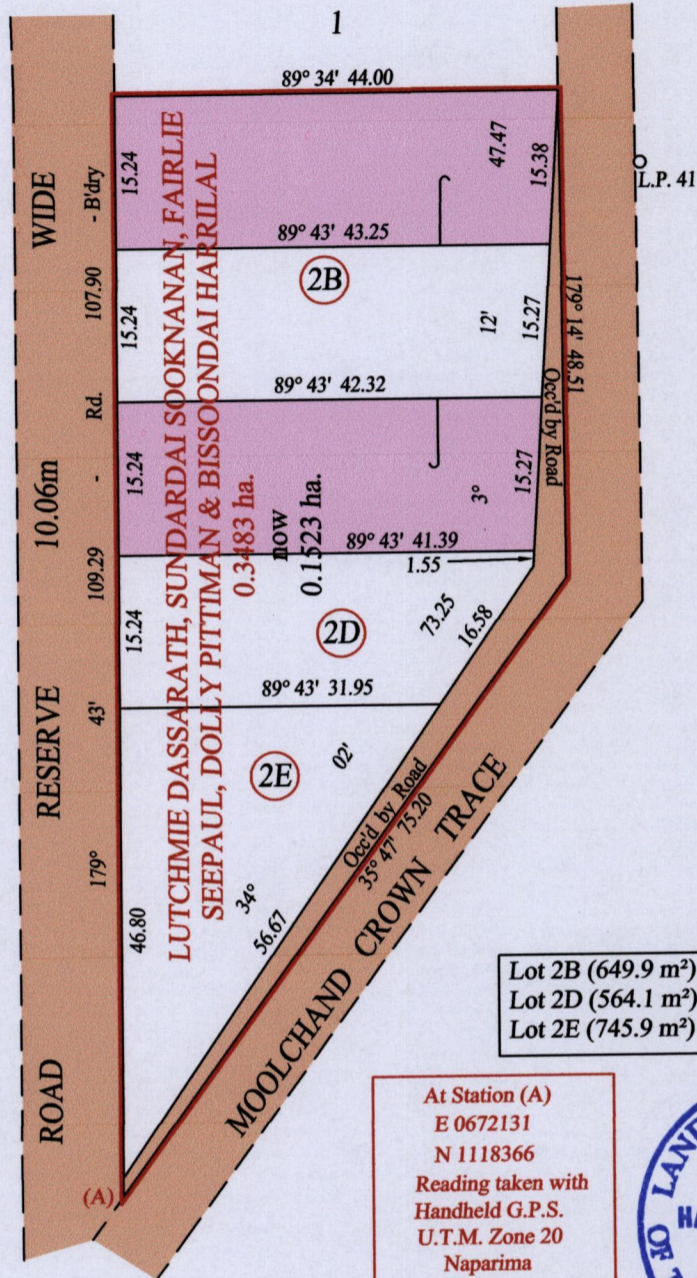
1654

43

REMAINING PORTION PLAN

R.P.O. Vol. 201 Fol. 287
C.T. Vol. 3072 Fol. 41
PROCESS ID # TG438

Ward of Siparia
County of St. Patrick
Cadastral Sheet G.18.K. 73 C
4/a



G N
U.T.M.

Lot 2B (649.9 m ²) - C.T. Vol. 4859 fol. 143
Lot 2D (564.1 m ²) - C.T. Vol. 4922 fol. 461
Lot 2E (745.9 m ²) - C.T. Vol. 4922 fol. 475

At Station (A)
E 0672131
N 1118366
Reading taken with
Handheld G.P.S.
U.T.M. Zone 20
Naparima
± 5 m.



Vide Bk. 406 fol. 228

Vide Bk. 940 fol. 85 for Original Survey

Approved *[Signature]*
Director of Surveys *[Signature]*

SCALE : 1:750

Note: Bearings are U.T.M. grid based on solar observations Distances are in metres

Plan of zero point three four eight three hectares originally transferred to Lutchmie Dasarath & Ors., showing a portion coloured pink and containing zero point one five two three hectares being the remainder after three (3) previous transfers of other portions of the land. In accordance with Regulation 25(1) of the Land Surveyors Regulations 1998 I certify that this plan represents the remaining portion

Checked by *[Signature]*

Entered on Trinidad & Tobago Land Surveyor 2013