

Process ID # 74-539
U.P.R.N No.....

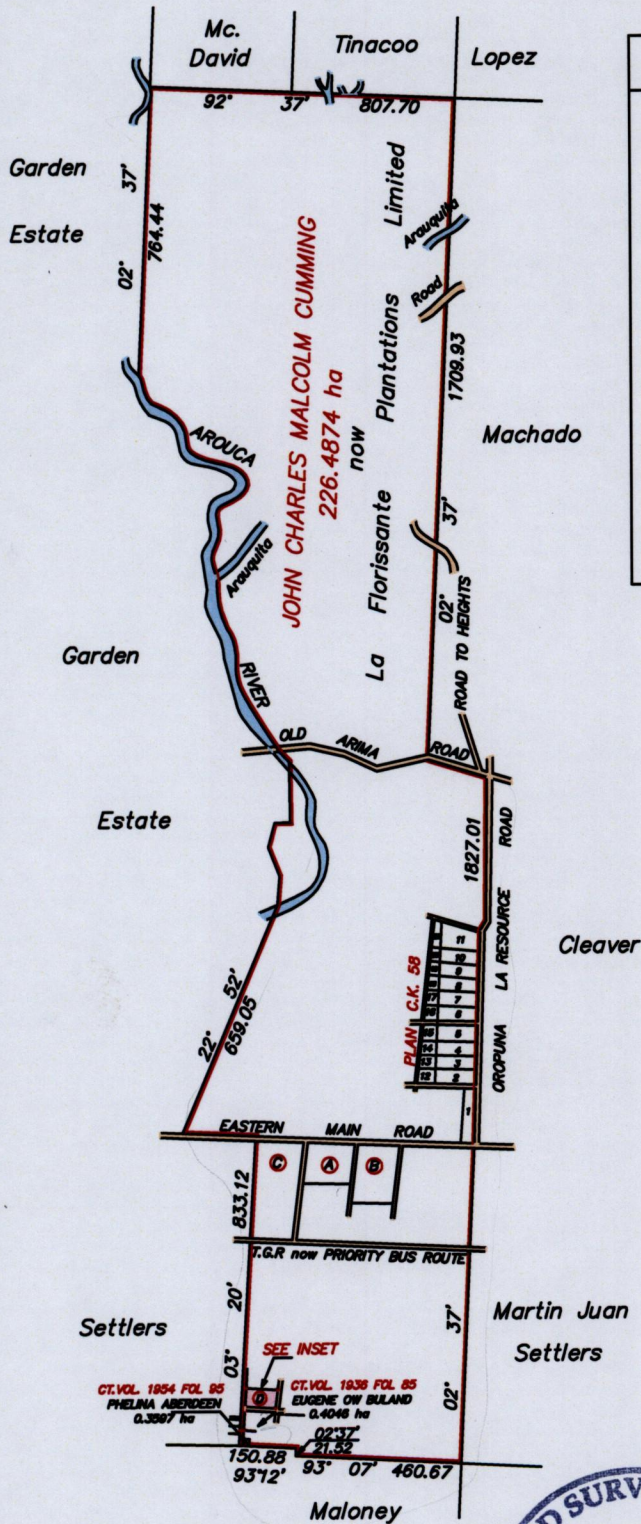
Cadastral Sheet (B.24.B) 24B
4/a

R.P.O. Vol..... Fol.....

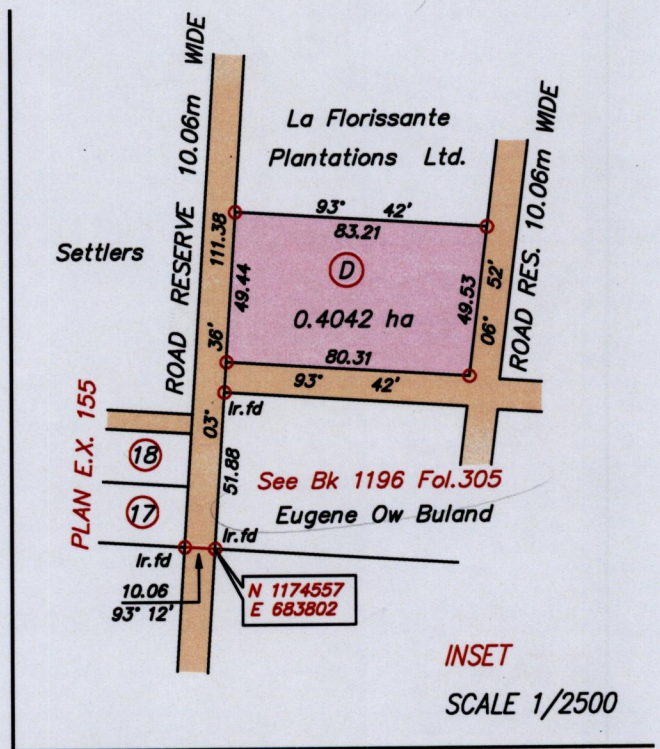
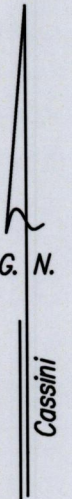
Borough of Arima

C.T. Vol. 805 Fol. 187

County of St. George



PARCELS & LOTS	AREA	CT.VOL	FOL.
9 & 19	0.4730 HA	1899	427
2	0.4047 HA	1896	65
12	0.1492 HA	1896	73
10 & 20	0.4629 HA	1896	83
3	0.4047 HA	1896	91
5	0.4249 HA	1896	99
8	0.4047 HA	1910	99
4	0.4047 HA	1918	257
6	0.4047 HA	1916	265
18	0.0784 HA	1932	309
11	0.6880 HA	1951	331
A	1.1964 HA	1900	503
B	1.8110 HA	1951	331



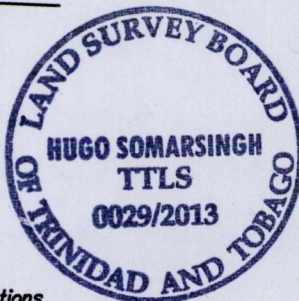
Original Plan E.C. 167

SCALE 1/20,000

Distances are in metres

Co-ordinate are obtained by hand held G.P.S
W.G.S.84 UTM Zone 20 +/- 5.00m

Approved by.....
Director of Surveys



○ Denotes Iron put unless otherwise stated

Bearings are Cassini Grid based on Solar Observations

Note : To obtain UTM bearings subtract 18 minutes

Plan of a Parcel of land coloured pink in the Borough of Arima
Containing zero point four zero four two hectares

Surveyed by me, with due authority in August 1999

Certified Correct in accordance with Regulation 25 (1) of the Land Surveyors' Regulations 1998,

Checked by..... 23/12/2013

H. Somarsingh
12th Sept 2013

Entered on..... Trinidad and Tobago Land Surveyor (TTLs)..... September 2013